

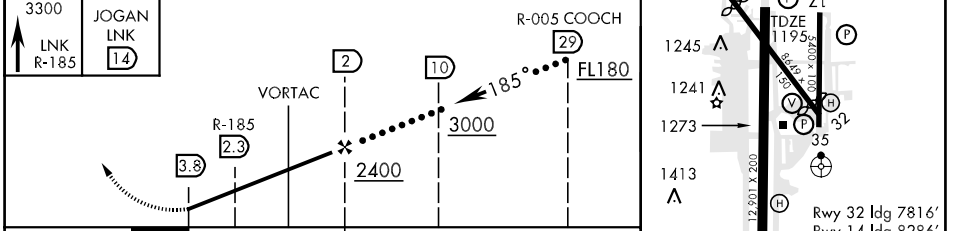
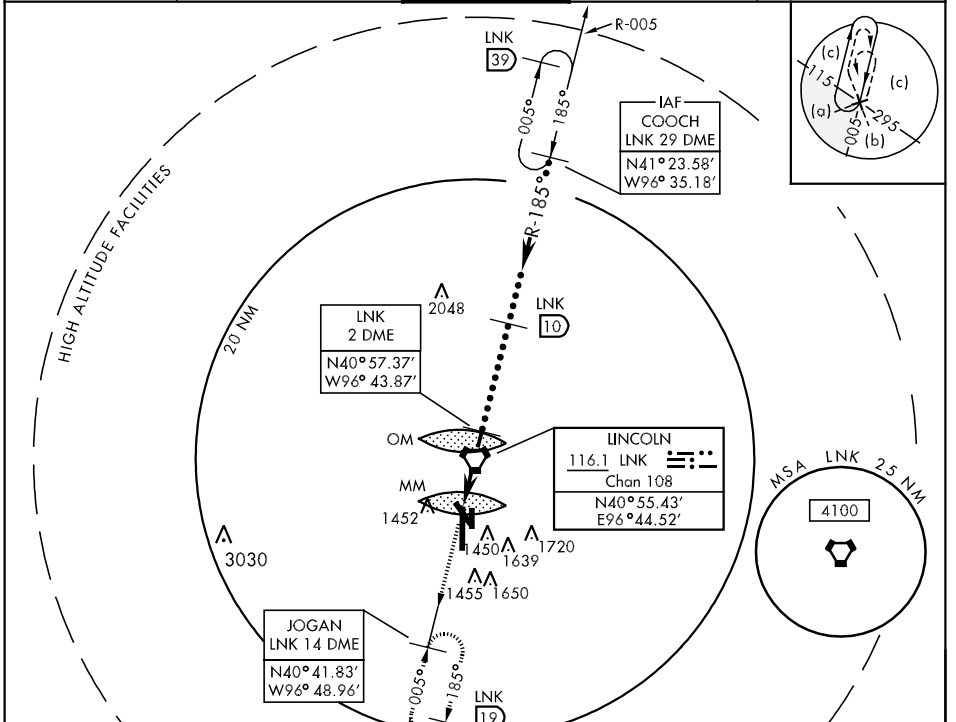
LINCOLN, NEBRASKA

HI-VOR/DME or TACAN RWY 18

VORTAC LNK 116.1 Chan 108	APCH CRS 185°	Rwy ldg 12,901 TDZE 1195 Arpt Elev 1219	JAL-232 [USAF]	LINCOLN (KLNK)
---	-------------------------	--	----------------	----------------

MALSRL A5 MISSED APPROACH: Climb to 3300 via LNK VORTAC R-185 to JOGAN 14 DME and hold.

ATIS ★ 118.05 290.9	LINCOLN APP CON 124.0 270.3 (170°-349°) 124.8 338.3 (350°-169°)	LINCOLN TOWER ★ 118.5 253.5	GND CON 121.9 275.8	CLNC DEL 120.7 225.4
-------------------------------	---	---------------------------------------	-------------------------------	--------------------------------



CATEGORY	C	D	E
S-18	1720-1½ 525 (600-1½)	1720-1¾	525 (600-1¾)
CIRCLING	1740-1½ 521 (600-1½)	1780-2 561 (600-2)	2020-2¾ 801 (900-2¾)

LINCOLN, NEBRASKA 40°51'N-96°46'W LINCOLN (KLNK)

HI-VOR/DME or TACAN RWY 18



NC-2, 22 OCT 2009 to 19 NOV 2009

NC-2, 22 OCT 2009 to 19 NOV 2009

Amdt 4A 09295