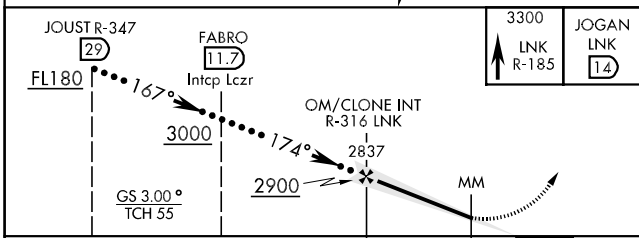
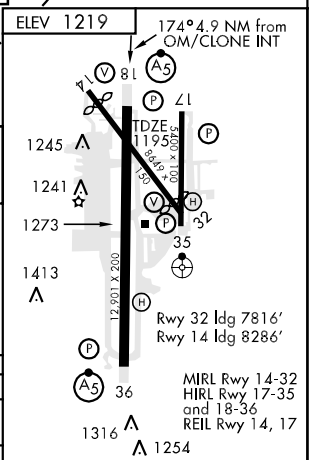
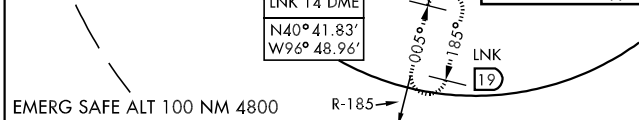
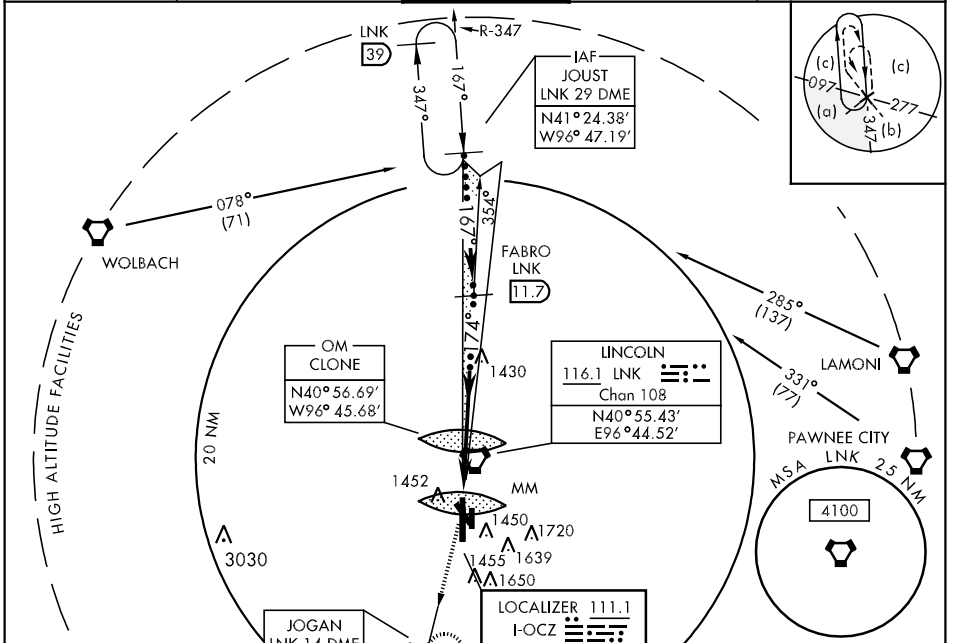


LOC I-OCZ <b>111.1</b>	APCH CRS <b>174°</b>	Rwy ldg <b>12,901</b> TDZE <b>1195</b> Arpt Elev <b>1219</b>	JAL-232 [USAF]	LINCOLN (KLNK)
MALSR A5	MISSED APPROACH: Climb to 3300 via LNK VORTAC R-185 to JOGAN 14 DME and hold.			

ATIS ★ <b>118.05 290.9</b>	LINCOLN APP CON <b>124.0 270.3 (170°-349°)</b> <b>124.8 338.3 (350°-169°)</b>	LINCOLN TOWER ★ <b>118.5 253.5</b>	GND CON <b>121.9 275.8</b>	CLNC DEL <b>120.7 225.4</b>
-------------------------------	---	---------------------------------------	-------------------------------	--------------------------------



CATEGORY	C	D	E
S-ILS 18	1395-1/2	200	(200-1/2)
S-LOC 18	1720-1 525 (600-1)	1720-1 1/4	525 (600-1 1/2)
CIRCLING	1740-1 1/2 521 (600-1 1/2)	1780-2 561 (600-2)	2020-2 3/4 801 (900-2 3/4)

FAF to MAP 4.9 NM					
Knots	120	140	160	180	200
Min:Sec	2:27	2:06	1:50	1:38	1:28

NC-2, 22 OCT 2009 to 19 NOV 2009

NC-2, 22 OCT 2009 to 19 NOV 2009