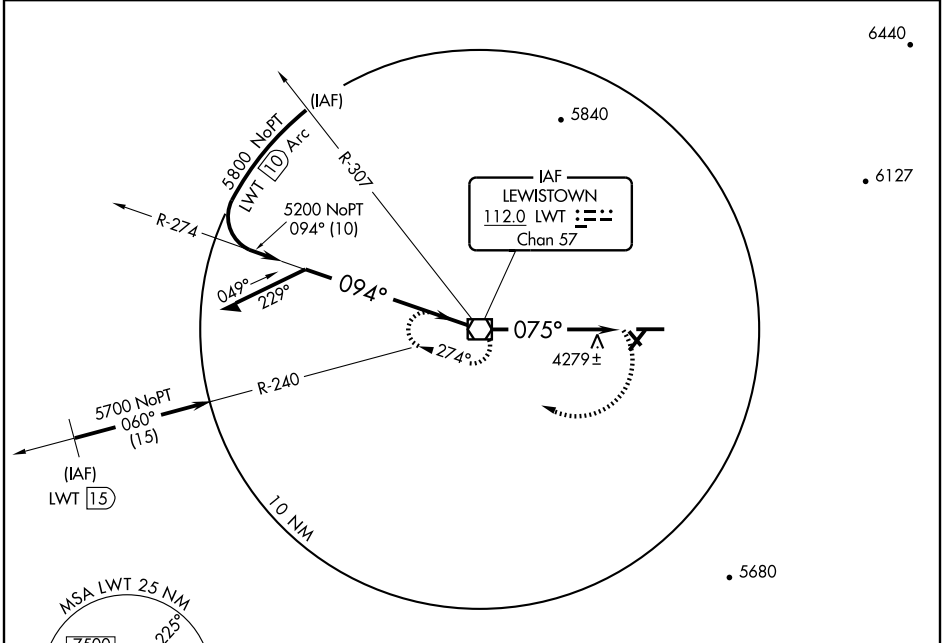


# VOR RWY 7 LEWISTOWN MUNI (LWT)

VORTAC LWT <b>112.0</b> Chan <b>57</b>	APP CRS <b>075°</b>	Rwy Idg <b>6100</b> TDZE <b>4126</b> Apt Elev <b>4167</b>
--	------------------------	---

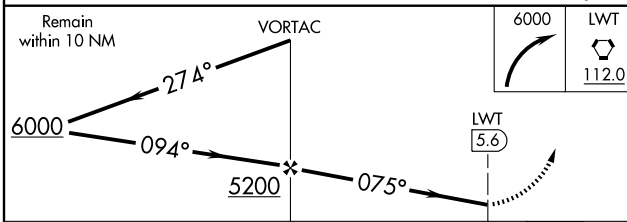
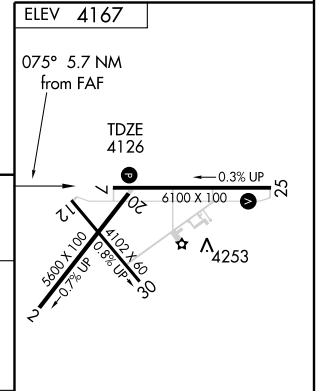
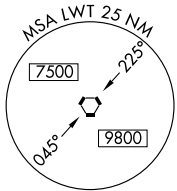
**⚠** If local altimeter setting not received, procedure not authorized. **MISSSED APPROACH:** Climbing right turn to 6000 direct LWT VORTAC and hold.

ASOS <b>118.375</b>	GREAT FALLS RADIO <b>122.2</b>	UNICOM <b>123.0 (CTAF)</b>
------------------------	-----------------------------------	-------------------------------



NW-1, 22 OCT 2009 to 19 NOV 2009

NW-1, 22 OCT 2009 to 19 NOV 2009



CATEGORY	A	B	C	D
S-7	4600-1 474 (500-1)		4600-1¼ 474 (500-1¼)	4600-1½ 474 (500-1½)
CIRCLING	4660-1 493 (500-1)		4660-1½ 493 (500-1½)	4880-2¼ 713 (800-2¼)

REIL Rwy 7 and 25  
MIRL Rwy 2-20, 7-25 and 12-30

FAF to MAP 5.6 NM					
Knots	60	90	120	150	180
Min:Sec	5:36	3:44	2:48	2:14	1:52