

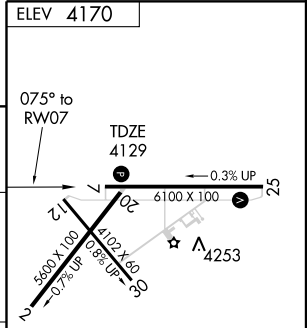
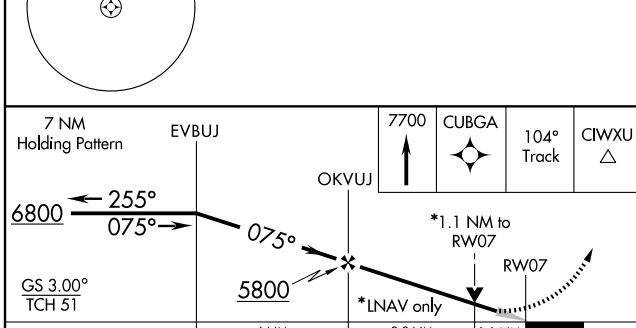
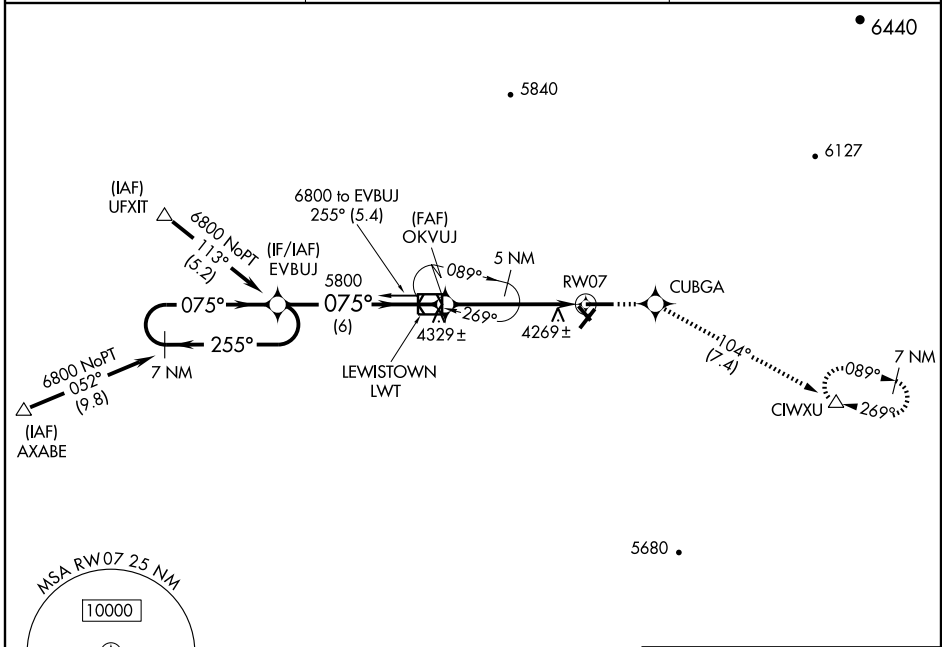
RNAV (GPS) RWY 7

LEWISTOWN MUNI (LWT)

WAAS CH 86700 W07A	APP CRS 075°	Rwy Idg 6100 TDZE 4129 Apt Elev 4170
--	------------------------	---

<p>▽ DME/DME RNP -0.3 NA. ▲ If local altimeter setting not received, procedure NA. Baro-VNAV NA below -23°C (-9°F)</p>	<p>MISSED APPROACH: Climb to 7700 direct CUBGA and via 104° track to CIWXU and hold, continue climb-in-hold to 7700.</p>
--	--

ASOS 118.375	GREAT FALLS RADIO 122.2	UNICOM 123.0 (CTAF) ①
------------------------	-----------------------------------	--



CATEGORY	A	B	C	D
LPV DA		4379-3/4	250 (300-3/4)	
LNAV/VNAV DA		4636-1 3/4	507 (500-1 3/4)	
LNAV MDA		4520-1	391 (400-1)	4520-1 1/4 391 (400-1 1/4)
CIRCLING	4680-1 3/4	510 (600-1 3/4)	4780-1 3/4 610 (700-1 3/4)	4860-2 1/4 690 (700-2 1/4)

REIL Rwy 7 and 25 **①**
MIRL Rwy 2-20, 7-25 and 12-30 **①**

NW-1, 22 OCT 2009 to 19 NOV 2009

NW-1, 22 OCT 2009 to 19 NOV 2009