

FORT SILL, OKLAHOMA

RNAV (GPS) RWY 35

APCH CRS	Rwy Idg	5000
352°	TDZE	1187
	Arprt Elev	1187

AL-230 [USA]

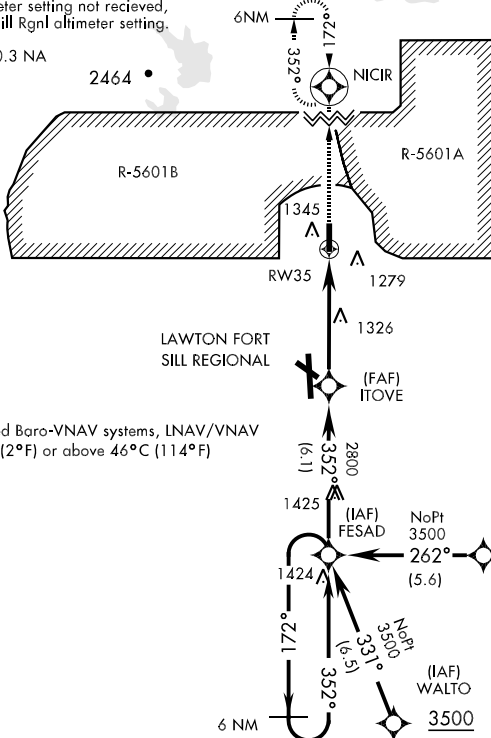
HENRY POST AAF (KFSI)

<p>* When ALS inop, increase all CATs vis to 1¼ miles. ** When ALS inop, increase CAT AB vis to 1 mile, CAT C vis to 1½ miles, CAT D vis to 1½ miles..</p>		<p>MISSED APPROACH: Climb to 3500 direct NICIR and hold.</p>
---	--	--

<p>ATIS 135.425 354.025</p>	<p>FORT SILL APP CON N127.3 307.275 S120.55</p>	<p>POST TOWER ★ 124.95 229.4</p>	<p>GND CON 121.7 279.575</p>	<p>CLNC DEL 121.7 279.575</p>	<p>ASR/PAR</p>
---	---	--	--	---	----------------

When local altimeter setting not received, use Lawton-Fort Sill Rgnl altimeter setting.

DME/DME RNP-0.3 NA



For uncompensated Baro-VNAV systems, LNAV/VNAV NA below -17°C (2°F) or above 46°C (114°F)

SC-1, 22 OCT 2009 to 19 NOV 2009

SC-1, 22 OCT 2009 to 19 NOV 2009

<p>3500</p> <p>NICIR</p> <p>† LNAV only</p>	<p>ELEV 1187</p>																									
<table border="1"> <thead> <tr> <th>CATEGORY</th> <th>A</th> <th>B</th> <th>C</th> <th>D</th> </tr> </thead> <tbody> <tr> <td>LNAV/VNAV * DA</td> <td colspan="2">1512-1</td> <td>325</td> <td>(400-1)</td> </tr> <tr> <td>LNAV MDA **</td> <td>1640-¾</td> <td>453 (500-¾)</td> <td>1640-1 453 (500-1)</td> <td>1640-1¼ 453 (500-1¼)</td> </tr> <tr> <td>CIRCLING</td> <td>1700-1</td> <td>513 (600-1)</td> <td>1720-1½ 533 (600-1½)</td> <td>1740-2 553 (600-2)</td> </tr> <tr> <td>S-PAR 35</td> <td>1388/24</td> <td>200 (200-¾) GS 3.00°</td> <td>1388/40</td> <td>200 (200-¾) GS 3.00°</td> </tr> </tbody> </table>	CATEGORY	A	B	C	D	LNAV/VNAV * DA	1512-1		325	(400-1)	LNAV MDA **	1640-¾	453 (500-¾)	1640-1 453 (500-1)	1640-1¼ 453 (500-1¼)	CIRCLING	1700-1	513 (600-1)	1720-1½ 533 (600-1½)	1740-2 553 (600-2)	S-PAR 35	1388/24	200 (200-¾) GS 3.00°	1388/40	200 (200-¾) GS 3.00°	<p>TDZE 1187</p> <p>35</p> <p>352° 4.9 NM from FAF</p> <p>HIRL Rwy 17-35</p>
CATEGORY	A	B	C	D																						
LNAV/VNAV * DA	1512-1		325	(400-1)																						
LNAV MDA **	1640-¾	453 (500-¾)	1640-1 453 (500-1)	1640-1¼ 453 (500-1¼)																						
CIRCLING	1700-1	513 (600-1)	1720-1½ 533 (600-1½)	1740-2 553 (600-2)																						
S-PAR 35	1388/24	200 (200-¾) GS 3.00°	1388/40	200 (200-¾) GS 3.00°																						

FORT SILL, OKLAHOMA

34°39'N-98°24'W

HENRY POST AAF (KFSI)

Orig 08297

RNAV (GPS) RWY 35