

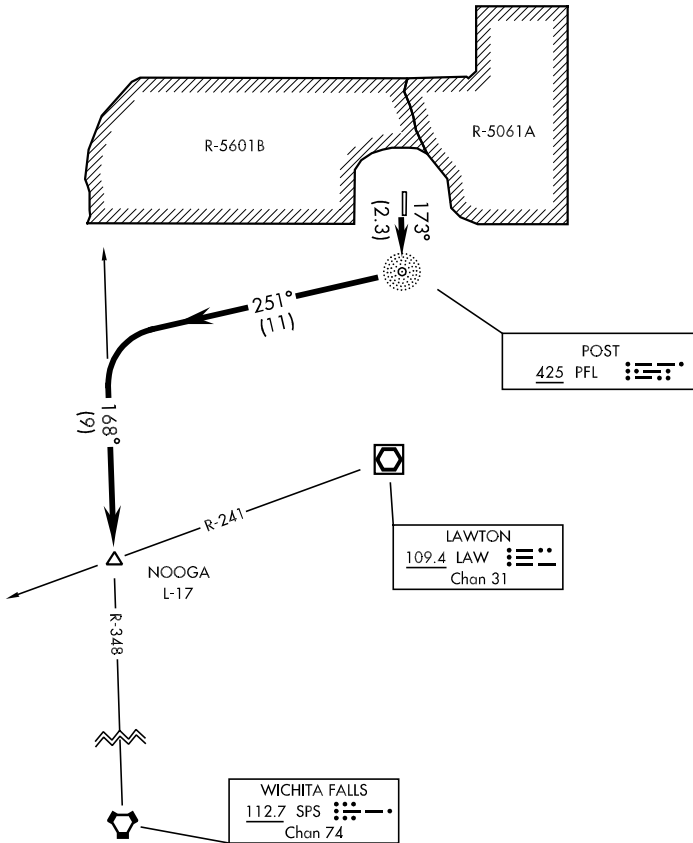
# NOOGA-TWO DEPARTURE (NOOGA2•NOOGA)

HENRY POST AAF (KFSI)

FORT SILL, OKLAHOMA

SL-230 [USA]

ATIS 135.425 354.025  
 CLNC DEL  
 121.7 279.575  
 GND CON  
 121.7 279.575  
 POST TOWER★  
 124.95 229.4  
 FT SILL DEP CON  
 120.55 307.275



SC-1, 22 OCT 2009 to 19 NOV 2009

SC-1, 22 OCT 2009 to 19 NOV 2009

## DEPARTURE ROUTE DESCRIPTION

Proceed direct to PFL NDB, thence via 251° mag brg from PFL NDB to and via SPS R-348 to NOOGA INT, maintain (assigned altitude).

# NOOGA-TWO DEPARTURE (NOOGA2•NOOGA)

FORT SILL, OKLAHOMA

HENRY POST AAF (KFSI)