

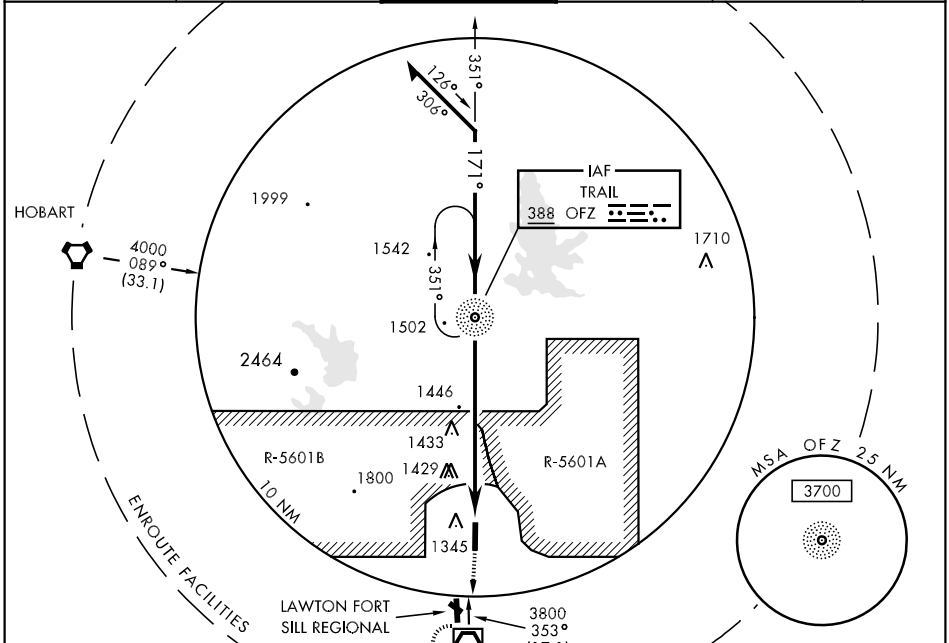
NDB OFZ <b>388</b>	APCH CRS <b>171°</b>	Rwy Idg TDZE <b>1187</b>	Arpt Elev <b>5000</b>
-----------------------	-------------------------	--------------------------------	--------------------------

AL-230 [USA]

When local altimeter setting not received, use Lawton-Fort Sill Rgnl altimeter.

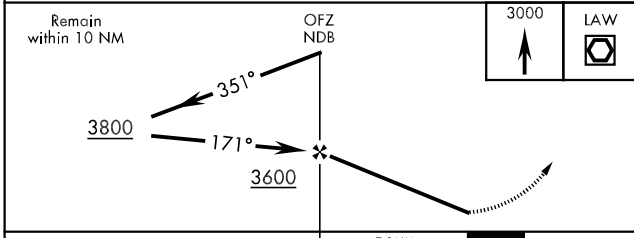
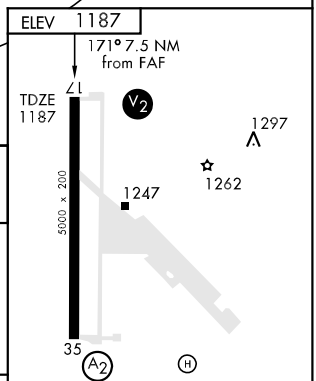
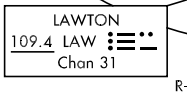
MISSED APPROACH: Climb straight ahead to 3000 direct to LAW VOR/DME and hold.

ATIS <b>135.425 354.025</b>	FORT SILL APP CON <b>N127.3 307.275 S120.55</b>	POST TOWER ★ <b>124.95 229.4</b>	GND CON <b>121.7 279.575</b>	CLNC DEL <b>121.7 279.575</b>	ASR/PAR
--------------------------------	--------------------------------------------------------	-------------------------------------	---------------------------------	----------------------------------	---------



SC-1, 22 OCT 2009 to 19 NOV 2009

SC-1, 22 OCT 2009 to 19 NOV 2009



CATEGORY	A	B	C	D	HIRL Rwy 17-35
S-17	1780-1 593 (600-1)		1780-1½ 593 (600-1½)	1780-1¾ 593 (600-1¾)	
CIRCLING	1780-1 593 (600-1)		1780-1½ 593 (600-1½)	1780-2 593 (600-2)	
S-PAR 17	1388-¾	200	(200-¾)	GS 3.00°	
					FAF to MAP 7.5 NM
					Knots
					60 90 120 150 180
					Min:Sec
					7:30 5:00 3:45 3:00 2:30