

LAWRENCEVILLE, ILLINOIS

AL-229 (FAA)

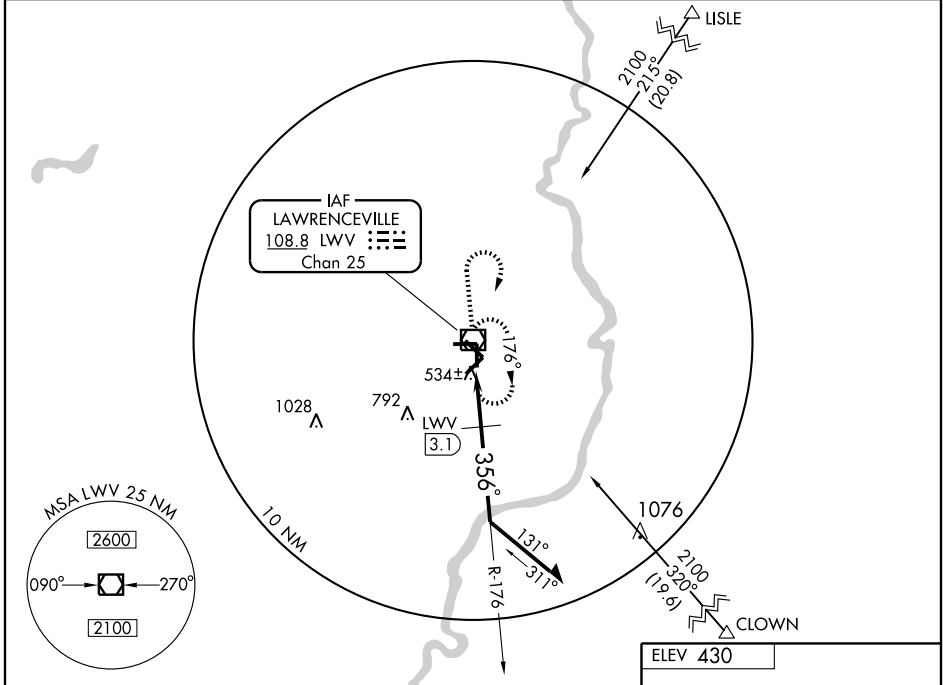
VOR RWY 36

LAWRENCEVILLE-VINCENNES INTL (LWV)

VOR/DME LWV 108.8 Chan 25	APP CRS 356°	Rwy Idg TDZE Apt Elev	5199 429 430
--	------------------------	-----------------------------	---

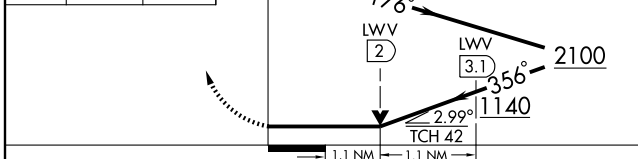
▲ MISSED APPROACH: Climb to 2100, then right turn direct LWV VOR/DME and hold.

ASOS 118.0	EVANSVILLE APP CON ★ 125.6 267.9	UNICOM 122.8 (CTAF) 0
----------------------	--	---------------------------------

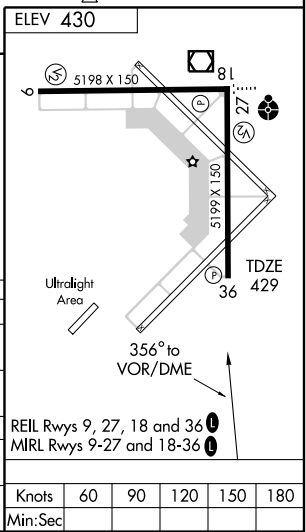


EC-3, 22 OCT 2009 to 19 NOV 2009

EC-3, 22 OCT 2009 to 19 NOV 2009



CATEGORY	A	B	C	D
S-36	1140-1	711 (800-1)	1140-2 711 (800-2)	1140-2 1/4 711 (800-2 1/4)
CIRCLING	1140-1	710 (800-1)	1140-2 710 (800-2)	1140-2 1/4 710 (800-2 1/4)
DME MINIMUMS				
S-36	800-1 371 (400-1)		800-1 1/4 371 (400-1 1/4)	
CIRCLING	880-1	450 (500-1)	880-1 1/2 450 (500-1 1/2)	980-2 550 (600-2)



LAWRENCEVILLE, ILLINOIS
Amdt 1 06159

38°46'N - 87°36'W

LAWRENCEVILLE-VINCENNES INTL (LWV)
VOR RWY 36