

LAWRENCEVILLE, ILLINOIS

AL-229 (FAA)

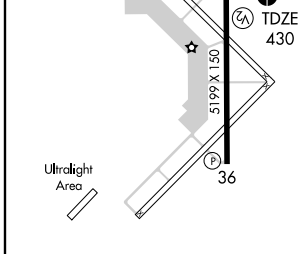
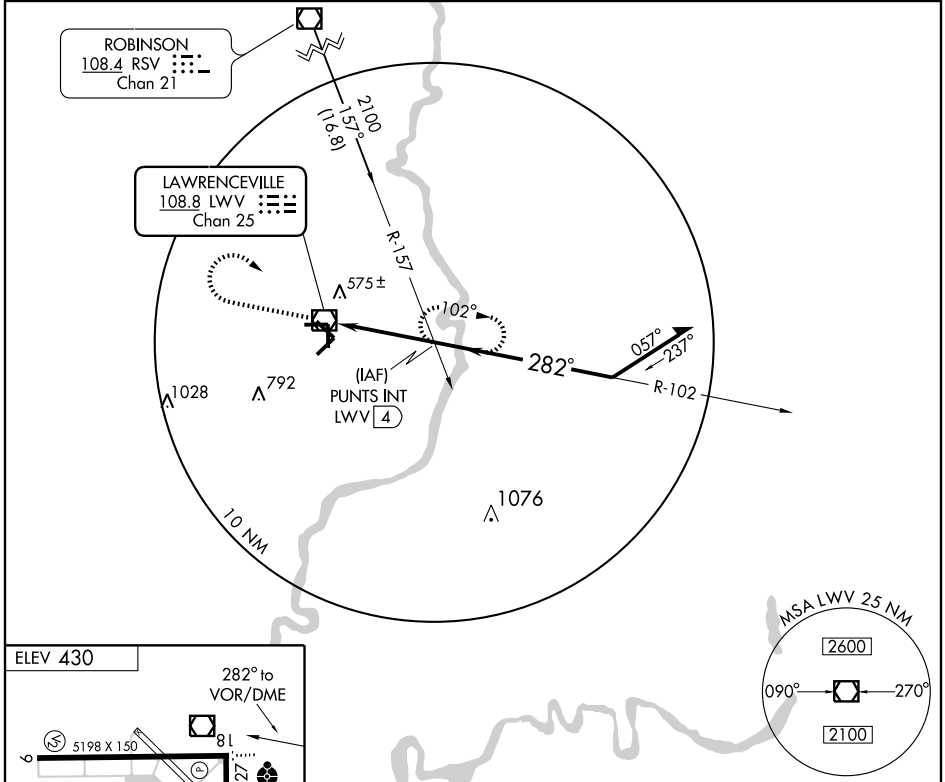
VOR RWY 27

LAWRENCEVILLE-VINCENNES INTL (LWV)

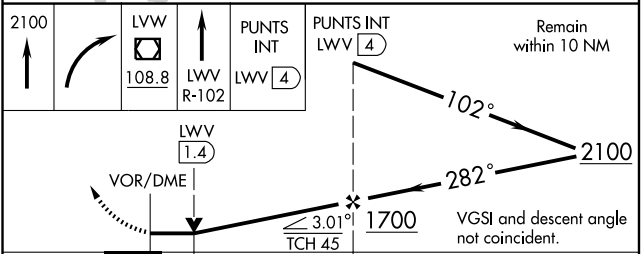
VOR/DME LWV 108.8 Chan 25	APP CRS 282°	Rwy ldg TDZE Apt Elev	5198 430 430
--	------------------------	-----------------------------	---

Inoperative table does not apply to Cat C.	ODALS 	MISSED APPROACH: Climb to 2100, then right turn direct LWV VOR/DME then via the LWV R-102 to PUNTS Int/4 DME and hold.
--	-----------	--

ASOS 118.0	EVANSVILLE APP CON★ 125.6 267.9	UNICOM 122.8 (CTAF) 0
----------------------	---	---------------------------------



REIL Rwy 9, 27, 18 and 36	0				
MIRL Rwy 9-27 and 18-36	0				
Knots	60	90	120	150	180
Min:Sec					



CATEGORY	A	B	C	D
S-27	840-3/4 410 (500-3/4)		840-1/4 410 (500-1/4)	
CIRCLING	880-1 450 (500-1)		880-1 1/2 450 (500-1 1/2)	980-2 550 (600-2)

LAWRENCEVILLE, ILLINOIS

Amdt 7A 06159

LAWRENCEVILLE-VINCENNES INTL (LWV)

38°46'N - 87°36'W

VOR RWY 27

EC-3, 22 OCT 2009 to 19 NOV 2009

EC-3, 22 OCT 2009 to 19 NOV 2009