

LAWRENCEVILLE, ILLINOIS

AL-229 (FAA)

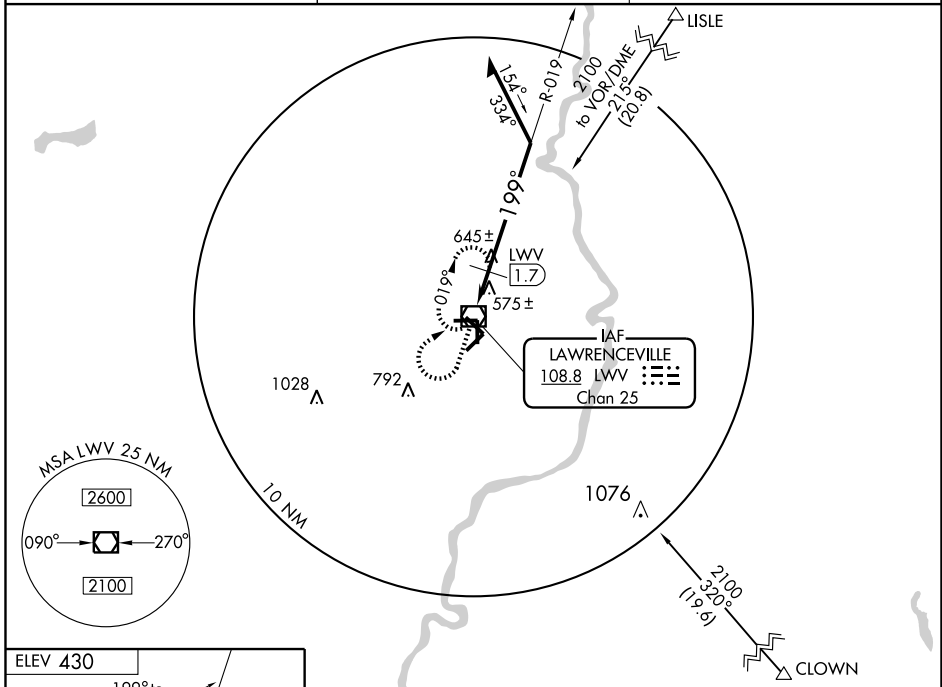
VOR RWY 18

LAWRENCEVILLE-VINCENNES INTL (LWV)

VOR/DME LWV 108.8 Chan 25	APP CRS 199°	Rwy ldg TDZE Apt Elev	5199 430 430
---	------------------------	-----------------------------	---

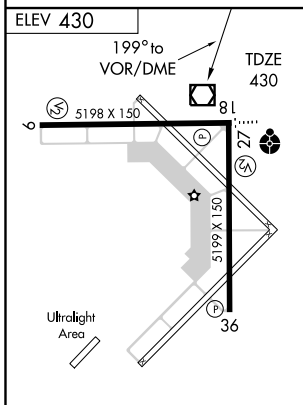
MISSED APPROACH: Climb to 2100 then right turn direct LWV VOR/DME and hold.

ASOS 118.0	EVANSVILLE APP CON ★ 125.6 267.9	UNICOM 122.8 (CTAF) 0
----------------------	--	---------------------------------

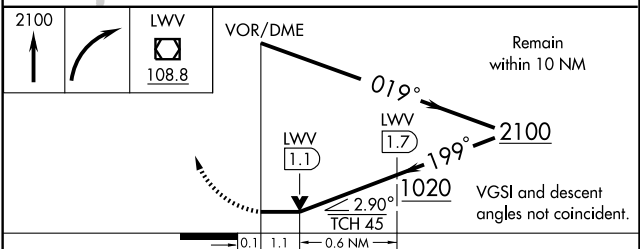


EC-3, 22 OCT 2009 to 19 NOV 2009

EC-3, 22 OCT 2009 to 19 NOV 2009



ELEV 430	TDZE 430
REIL Rwy 9, 27, 18 and 36	MIRL Rwy 9-27 and 18-36
Knots	60 90 120 150 180
Min:Sec	



CATEGORY	A	B	C	D
S-18	1020-1 590 (600-1)		1020-1½ 590 (600-1½)	1020-1¾ 590 (600-1¾)
CIRCLING	1020-1 590 (600-1)		1020-1½ 590 (600-1½)	1020-2 590 (600-2)
DME MINIMUMS				
S-18	840-1 410 (500-1)		840-1¼ 410 (500-1¼)	
CIRCLING	880-1 450 (500-1)		880-1½ 450 (500-1½)	980-2 550 (600-2)

LAWRENCEVILLE, ILLINOIS

LAWRENCEVILLE-VINCENNES INTL (LWV)

Amdt 1 06159

38°46'N - 87°36'W

VOR RWY 18