

LAWRENCEVILLE, ILLINOIS

AL-229 (FAA)

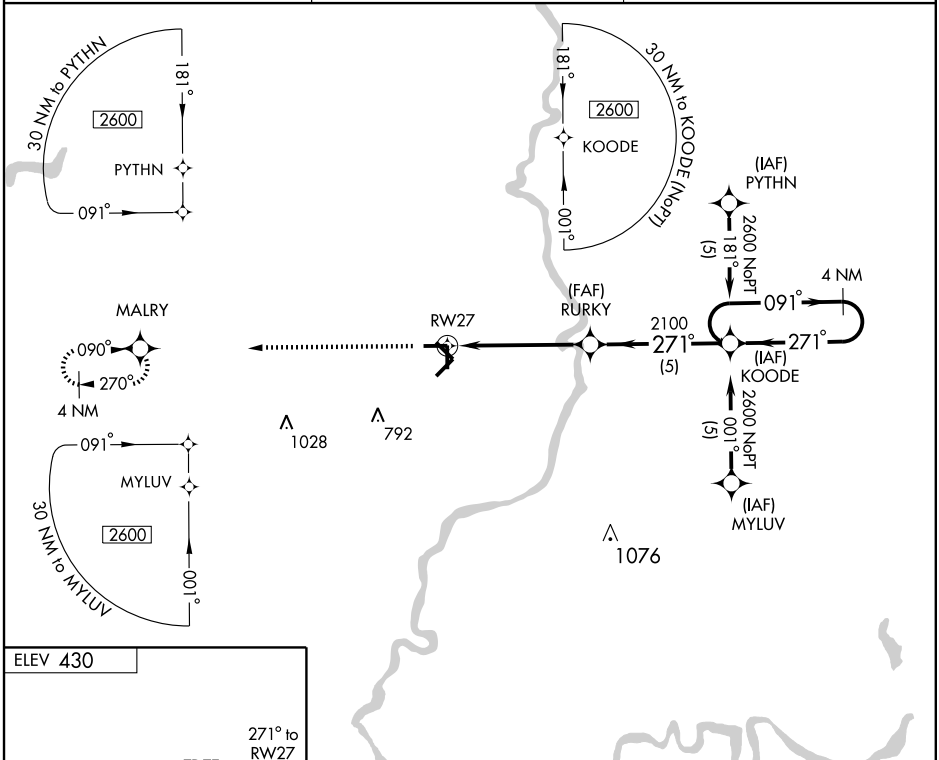
# RNAV (GPS) RWY 27

LAWRENCEVILLE-VINCENNES INTL (L.V.V)

APP CRS	Rwy Idg	<b>5198</b>
<b>271°</b>	TDZE	<b>430</b>
	Apt Elev	<b>430</b>

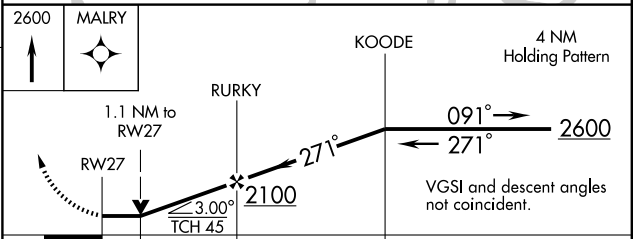
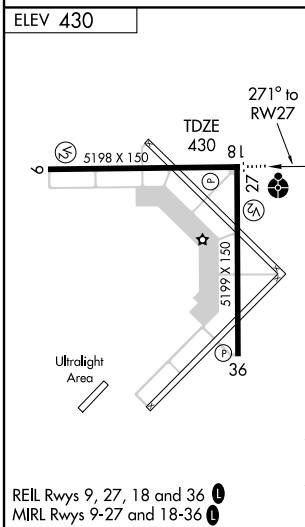
NA	GPS or RNP-0.3 Required. DME/DME RNP-0.3 NA.	ODALS 	MISSED APPROACH: Climb to 2600 direct MALRY WP and hold.

ASOS <b>118.0</b>	EVANSVILLE APP CON ★ <b>125.6 267.9</b>	UNICOM <b>122.8 (CTAF) 0</b>
----------------------	--	---------------------------------



EC-3, 22 OCT 2009 to 19 NOV 2009

EC-3, 22 OCT 2009 to 19 NOV 2009



CATEGORY	A	B	C	D
LNAV/VNAV	DA	NA		
LNAV MDA	800- <sup>3</sup> / <sub>4</sub> 370 (400- <sup>3</sup> / <sub>4</sub> )			800-1 <sup>1</sup> / <sub>4</sub> 370 (400-1 <sup>1</sup> / <sub>4</sub> )
CIRCLING	880-1	450 (500-1)	880-1 <sup>1</sup> / <sub>2</sub> 450 (500-1 <sup>1</sup> / <sub>2</sub> )	980-2 550 (600-2)

LAWRENCEVILLE, ILLINOIS  
 Orig-C 06159

38°46'N - 87°36'W

## LAWRENCEVILLE-VINCENNES INTL (L.V.V) RNAV (GPS) RWY 27