

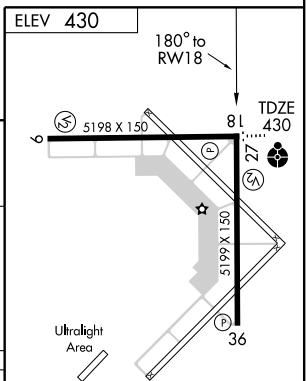
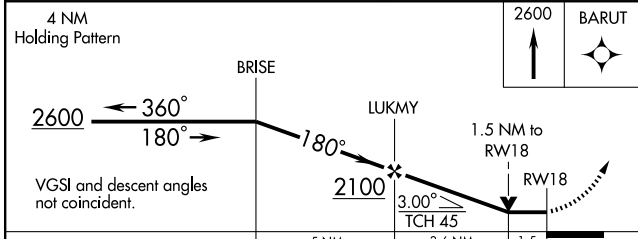
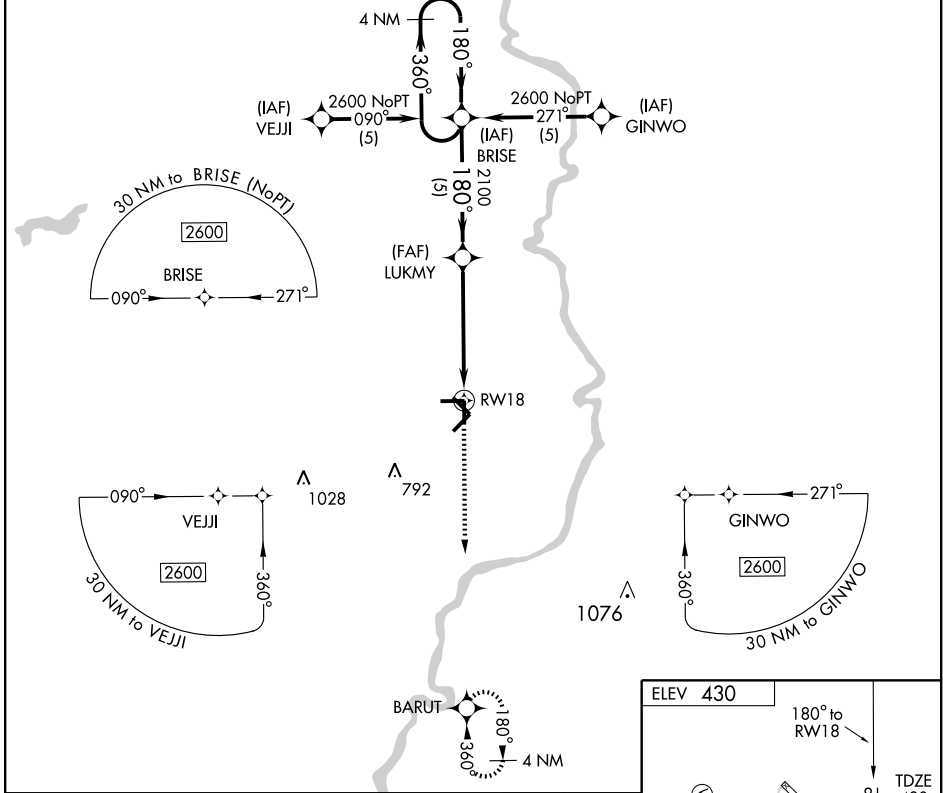
# RNAV (GPS) RWY 18

LAWRENCEVILLE-VINCENNES INTL (LWV)

APP CRS	Rwy Idg	<b>5199</b>
<b>180°</b>	TDZE	<b>430</b>
	Apt Elev	<b>430</b>

**▲ NA** GPS or RNP-0.3 Required. DME/DME RNP-0.3 NA. MISSED APPROACH: Climb to 2600 direct BARUT WP and hold.

ASOS <b>118.0</b>	EVANSVILLE APP CON ★ <b>125.6 267.9</b>	UNICOM <b>122.8 (CTAF) 0</b>
----------------------	--	---------------------------------



4 NM Holding Pattern	<table border="1"> <tr> <td>2600</td> <td>BARUT</td> </tr> <tr> <td>↑</td> <td>✦</td> </tr> </table>				2600	BARUT	↑	✦
2600	BARUT							
↑	✦							
VGSI and descent angles not coincident.	<table border="1"> <tr> <td>5 NM</td> <td>3.6 NM</td> <td>1.5</td> <td></td> </tr> </table>				5 NM	3.6 NM	1.5	
5 NM	3.6 NM	1.5						
CATEGORY	A	B	C	D				
LNAV/VNAV DA	NA							
LNAV MDA	940-1	510 (600-1)	940-1½	510 (600-1½)				
CIRCLING	940-1	510 (600-1)	940-1½	980-2 550 (600-2)				

REIL Rwy 9, 27, 18 and 36 **0**  
MIRL Rwy 9-27 and 18-36 **0**

EC-3, 22 OCT 2009 to 19 NOV 2009

EC-3, 22 OCT 2009 to 19 NOV 2009