

SHL-227 [USAF]

ATIS
270.1
CLNC DEL
120.9 289.4
GND CON
121.8 275.8
NELLIS TOWER
132.55 327.0
NELLIS DEP CON
135.1 385.4
LOS ANGELES CENTER
124.2 134.65 307.9 343.6

MORMON MESA
114.3 MMM
Chan 90
L-9, H-3

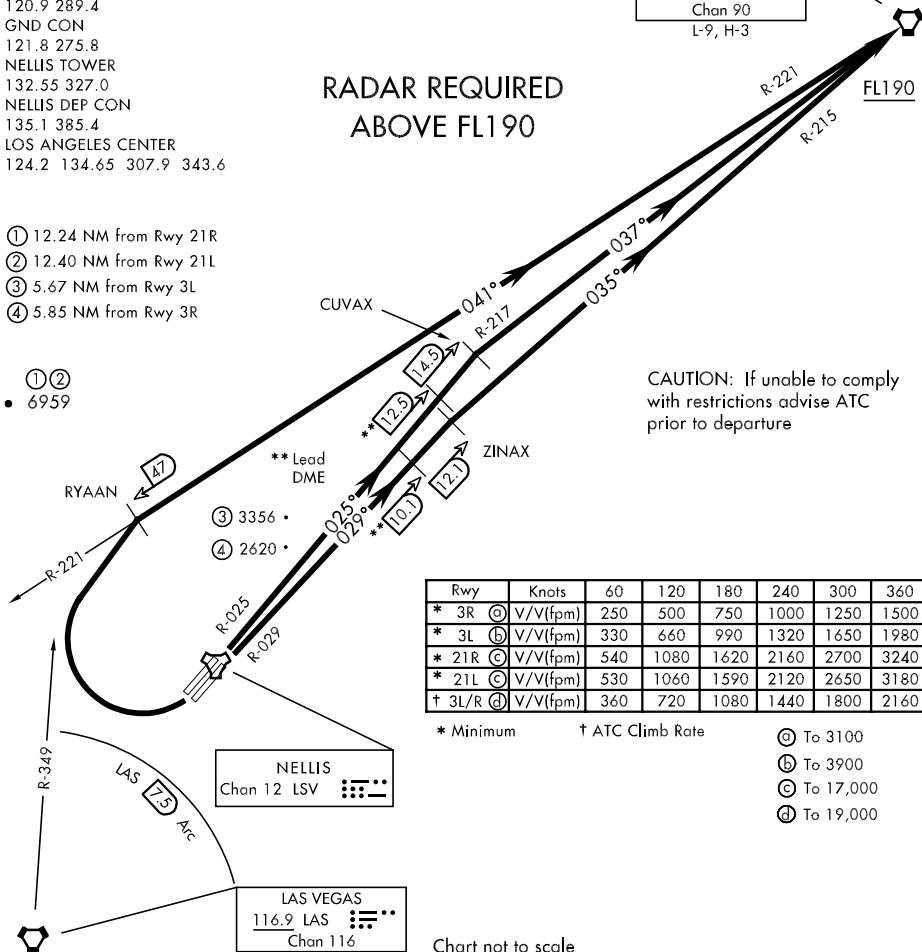
**RADAR REQUIRED
ABOVE FL190**

- ① 12.24 NM from Rwy 21R
- ② 12.40 NM from Rwy 21L
- ③ 5.67 NM from Rwy 3L
- ④ 5.85 NM from Rwy 3R

- ① ②
- 6959

CAUTION: If unable to comply with restrictions advise ATC prior to departure

SW-4, 22 OCT 2009 to 19 NOV 2009



Rwy	Knots	60	120	180	240	300	360
* 3R (A)	V/V(fpm)	250	500	750	1000	1250	1500
* 3L (B)	V/V(fpm)	330	660	990	1320	1650	1980
* 21R (C)	V/V(fpm)	540	1080	1620	2160	2700	3240
* 21L (C)	V/V(fpm)	530	1060	1590	2120	2650	3180
† 3L/R (D)	V/V(fpm)	360	720	1080	1440	1800	2160

* Minimum † ATC Climb Rate

- (A) To 3100
- (B) To 3900
- (C) To 17,000
- (D) To 19,000

Chart not to scale

SW-4, 22 OCT 2009 to 19 NOV 2009

DEPARTURE ROUTE DESCRIPTION

TAKE-OFF RWY 3L: Fly runway heading to intercept LSV TACAN R-025 then direct CUVAX, intercept the MMM VORTAC R-217 then direct MMM climbing to FL190 or as assigned, then via assigned route.

TAKE-OFF RWY 3R: Fly runway heading to intercept LSV TACAN R-029 then direct ZINAX, intercept the MMM VORTAC R-215 then direct MMM climbing to FL190 or as assigned, then via assigned route.

TAKE-OFF RWY 21L/R: Turn right to intercept MMM VORTAC R-221 prior to MMM 47 DME, remain North of the LAS VORTAC 7.5 DME, remain East of LAS R-349, intercept MMM R-221 then direct MMM, cross MMM at or above FL190 then via assigned route.

NOISE ABATEMENT PROCEDURES: Fly IAW Nellis Noise Abatement instructions published in AP/1.