

LOC/DME Y RWY 21L

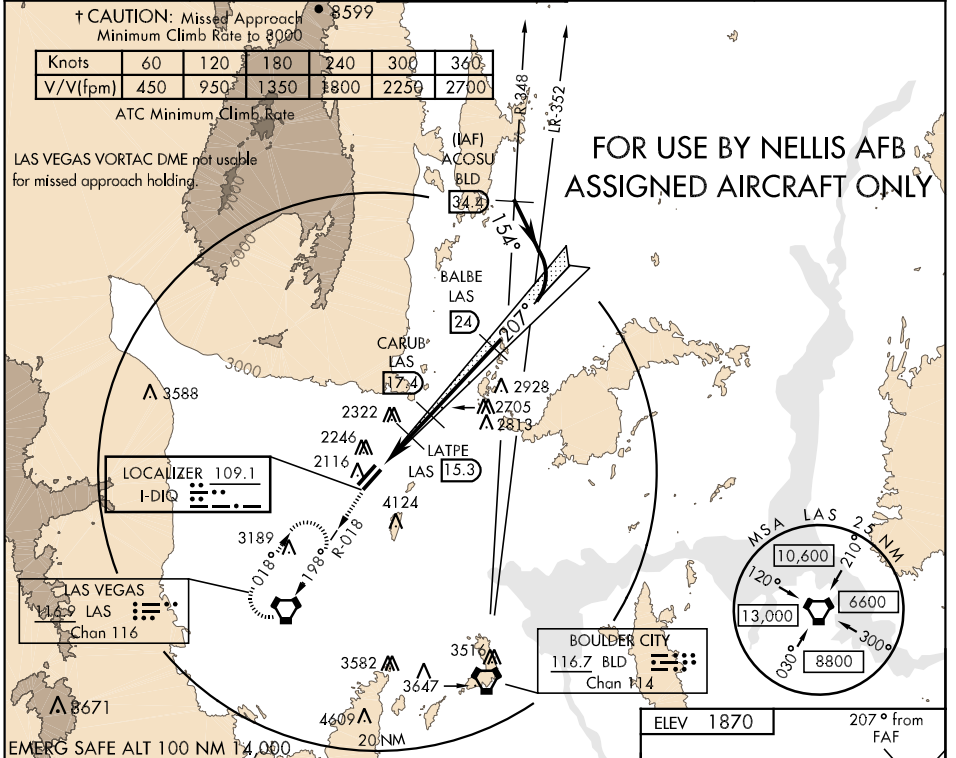
LOC I-DIQ 109.1	APCH CRS 207°	Rwy Idg TDZE Arpt Elev 10,055 1866 1870	AL-227 [USAF]	NELLIS AFB (KLSV)
---------------------------	-------------------------	---	---------------	-------------------

* When ALS inop, increase CAT C vis to 1½ miles, CAT D vis to 1¾ miles, CAT E vis to 2 miles.
 ** Circling not authorized E of Rwy 3R-21L.

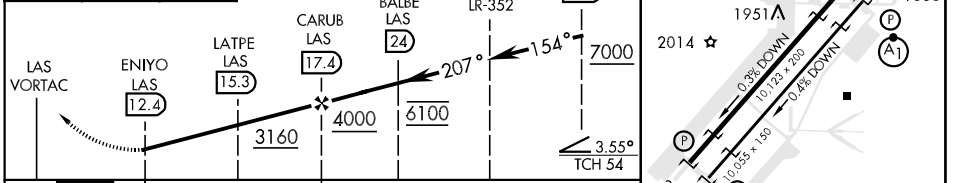
 ALSF-1

 † MISSED APPROACH: Climb to 8000, track 206° to intercept the LAS VORTAC R-018 to LAS and hold.

ATIS 270.1	NELLIS APP CON 124.95 273.55	NELLIS TOWER 132.55 327.0	GND CON 121.8 275.8	CINC DEL 120.9 289.4
----------------------	--	-------------------------------------	-------------------------------	--------------------------------



8000	tr 206°	LAS R-018	VGSJ and descent angle not coincident.	ACOSU BLD R-348 (34.4)	ELEV 1870	207° from FAF
------	---------	-----------	--	------------------------	-----------	---------------



CATEGORY	C	D	E
S-LOC 21L *	2420/50 554 (600-1)	2420/60 554 (600-1¼)	2420-1½ 554 (600-1½)
CIRCLING **	2680-2¼ 810 (900-2¼)	2680-2½ 810 (900-2½)	2940-3 1070 (1100-3)

HIRL all Rwy

SW-4, 22 OCT 2009 to 19 NOV 2009

SW-4, 22 OCT 2009 to 19 NOV 2009