

HI-TACAN Y RWY 21L

TACAN LSV Chan 12	APCH CRS 207°	Rwy Idg 10,055 TDZE 1866 Arprt Elev 1870
----------------------	------------------	--

JAL-227 [USAF]

NELLIS AFB (KLSV)

▼ * When ALS inop, increase CAT C vis to 1¼ miles, CAT D vis to 2 miles, CAT E vis to 2¼ miles.
** Circling not authorized E of Rwy 3R-21L.

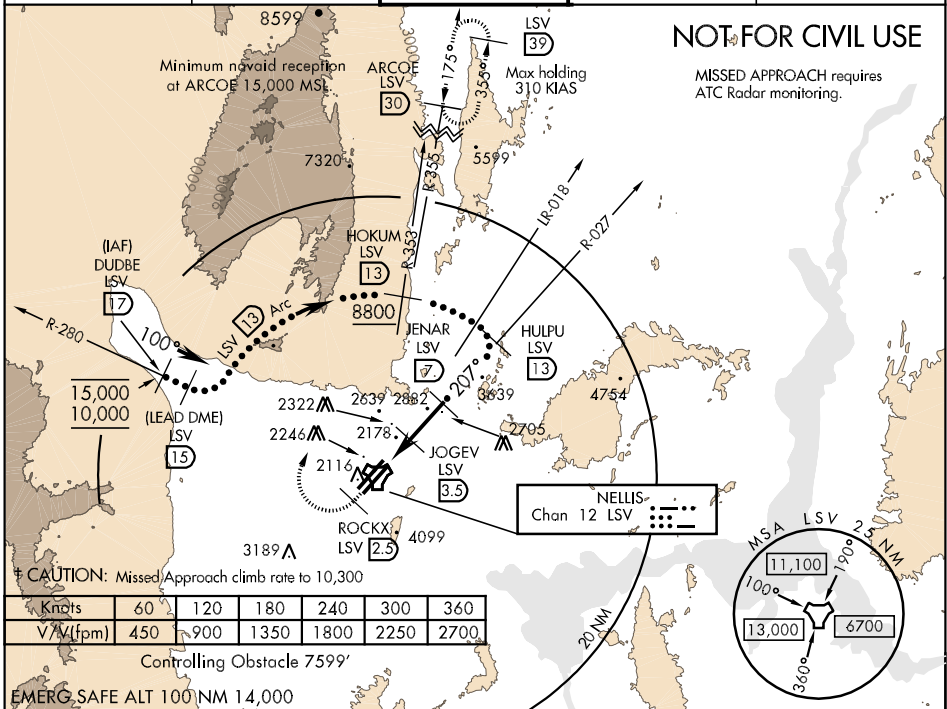


† MISSED APPROACH: Climb to 15,000, heading 209° to 2.5 DME (ROCKX), then climbing right turn heading 020° to join LSV TACAN R-355 to ARCOE and hold.

ATIS 270.1	NELLIS APP CON 124.95 273.55	NELLIS TOWER 132.55 327.0	GND CON 121.8 275.8	CLNC DEL 120.9 289.4
---------------	---------------------------------	------------------------------	------------------------	-------------------------

NOT FOR CIVIL USE

MISSED APPROACH requires ATC Radar monitoring.



SW-4, 22 OCT 2009 to 19 NOV 2009

SW-4, 22 OCT 2009 to 19 NOV 2009

CATEGORY	C	D	E
	2480/60 614 (700-1¼)	2480-1½ 614 (700-1½)	2480-1¾ 614 (700-1¾)
CIRCLING**	2680-2¼ 810 (900-2¼)	2680-2½ 810 (900-2½)	2940-3 1070 (1100-3)

HIRL all Rwy

HI-TACAN Y RWY 21L