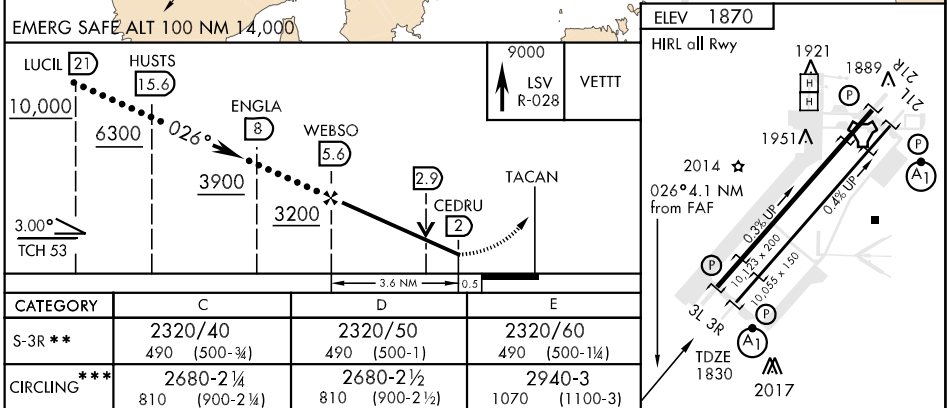
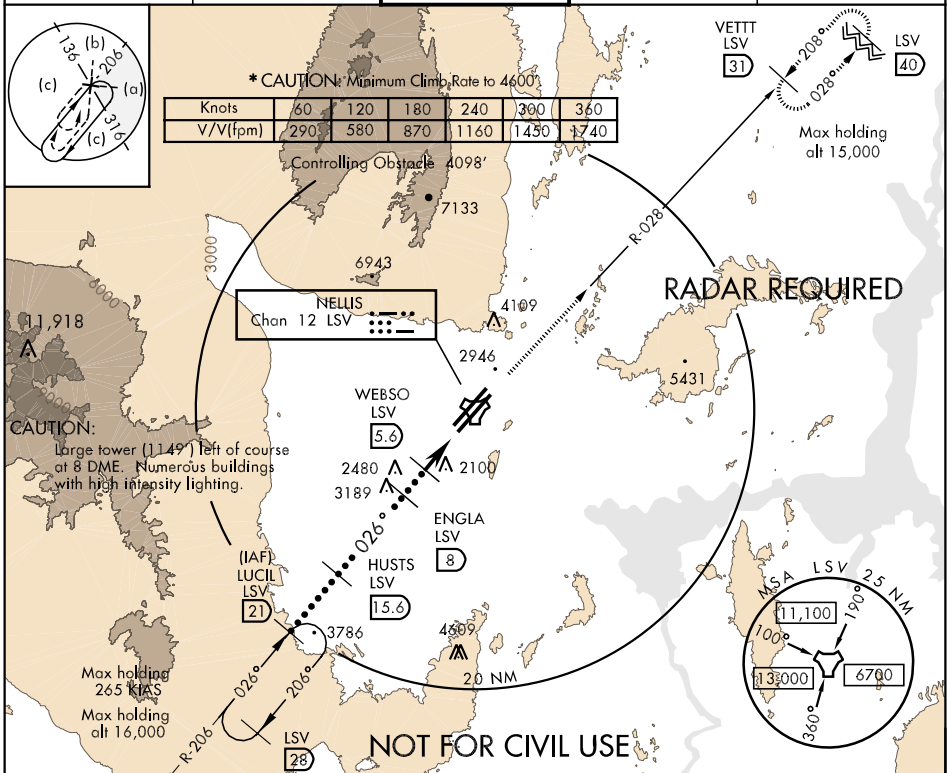


TACAN Chan 12	LSV	APCH CRS 026°	Rwy Idg 10,055	TDZE 1830	Arpt Elev 1870	JAL-227 [USAF]	NELLIS AFB (KLSV)
** When ALS inop, increase CAT C RVR to 60, vis to 1½ miles, CAT D vis to 1½ miles, CAT E vis to 1¾ miles. *** Circling not authorized E of Rwy 3R-21L.						ALSF-1 	* MISSED APPROACH: Climb to 9000 on LSV R-028 to VETTT and hold.

ATIS 270.1	NELLIS APP CON 124.95 273.55	NELLIS TOWER 132.55 327.0	GND CON 121.8 275.8	CLNC DEL 120.9 289.4
---------------	---------------------------------	------------------------------	------------------------	-------------------------



SW-4, 22 OCT 2009 to 19 NOV 2009

SW-4, 22 OCT 2009 to 19 NOV 2009