

# DREAM TWO DEPARTURE (DREAM 2 • DREAM)

ATIS 270.1  
 CLNC DEL  
 120.9 289.4  
 GND CON  
 121.8 275.8  
 NELLIS TOWER  
 132.55 327.0  
 NELLIS DEP CON  
 135.1 385.4

SHL-227 [USAF]

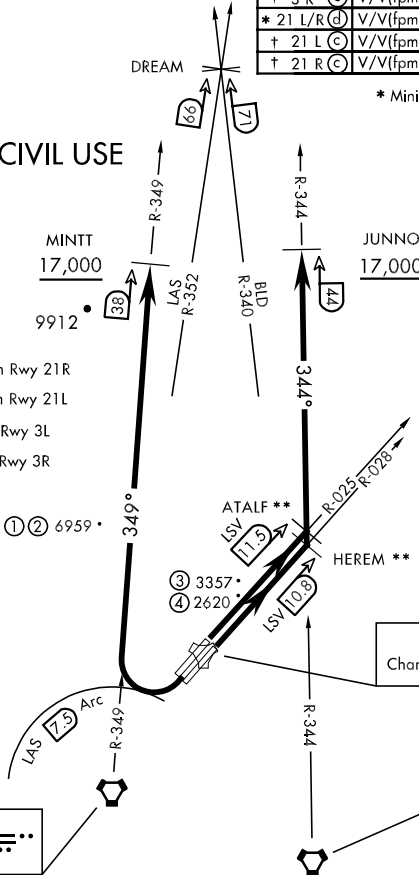
Rwy	Knots	60	120	180	240	300	360
* 3 L (a)	V/V(fpm)	300	600	900	1200	1500	1800
* 3 R (b)	V/V(fpm)	240	480	720	960	1200	1400
† 3 L (c)	V/V(fpm)	500	1000	1500	2000	2490	2990
† 3 R (c)	V/V(fpm)	500	1000	1490	1990	2480	2980
* 21 L/R (d)	V/V(fpm)	400	800	1200	1600	2000	2400
† 21 L (c)	V/V(fpm)	460	920	1370	1830	2280	2740
† 21 R (c)	V/V(fpm)	460	920	1380	1840	2300	2760

\* Minimum † ATC Climb Rate

- (a) to 3600
- (b) to 3000
- (c) to 17,000
- (d) to 8500

**NOT FOR CIVIL USE**

- ① 12.24 NM from Rwy 21R
- ② 12.40 NM from Rwy 21L
- ③ 5.67 NM from Rwy 3L
- ④ 5.85 NM from Rwy 3R



CAUTION: If unable to comply with restrictions advise ATC prior to departure.

\*\* Lead DME:  
 ATALF - LSV 9.5  
 HEREM - LSV 8.8

NELLIS  
 Chan 12 LSV

LAS VEGAS  
 116.9 LAS  
 Chan 116

BOULDER CITY  
 116.7 BLD  
 Chan 114

## DEPARTURE ROUTE DESCRIPTION

**TAKE-OFF RWY 3L:** Fly runway heading to intercept the LSV TACAN R-025 then direct ATALF, intercept the BLD VORTAC R-344 then direct JUNNO, cross JUNNO at or above 17,000, then via assigned route.

**TAKE-OFF RWY 3R:** Fly runway heading to intercept the LSV TACAN R-028 then direct HEREM, intercept the BLD VORTAC R-344 then direct JUNNO, cross JUNNO at or above 17,000. Then via assigned route.

**TAKE-OFF RWY 21L/R:** Turn right to intercept LAS VORTAC R-349 outbound. Remain North of LAS 7.5 DME turning Northbound. Intercept LAS R-349 between 5000 and 6000, do not proceed West of LAS R-349. Cross MINTT at above 17,000, then via assigned route.

**NOISE ABATEMENT PROCEDURES:** Fly IAW Nellis Noise Abatement instructions published in AP/1.

SW-4, 22 OCT 2009 to 19 NOV 2009

SW-4, 22 OCT 2009 to 19 NOV 2009