

# RNAV (GPS) RWY 32

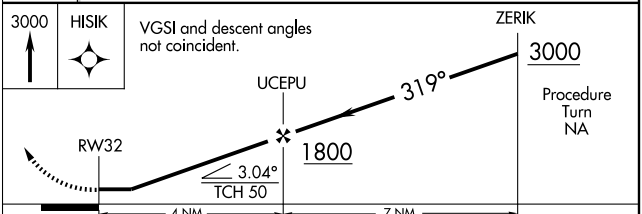
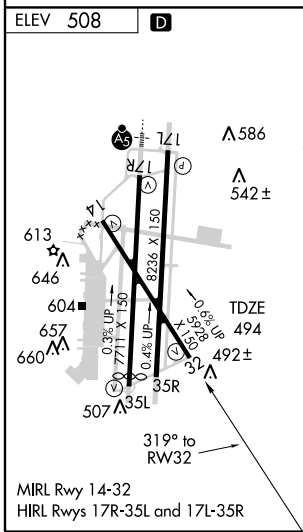
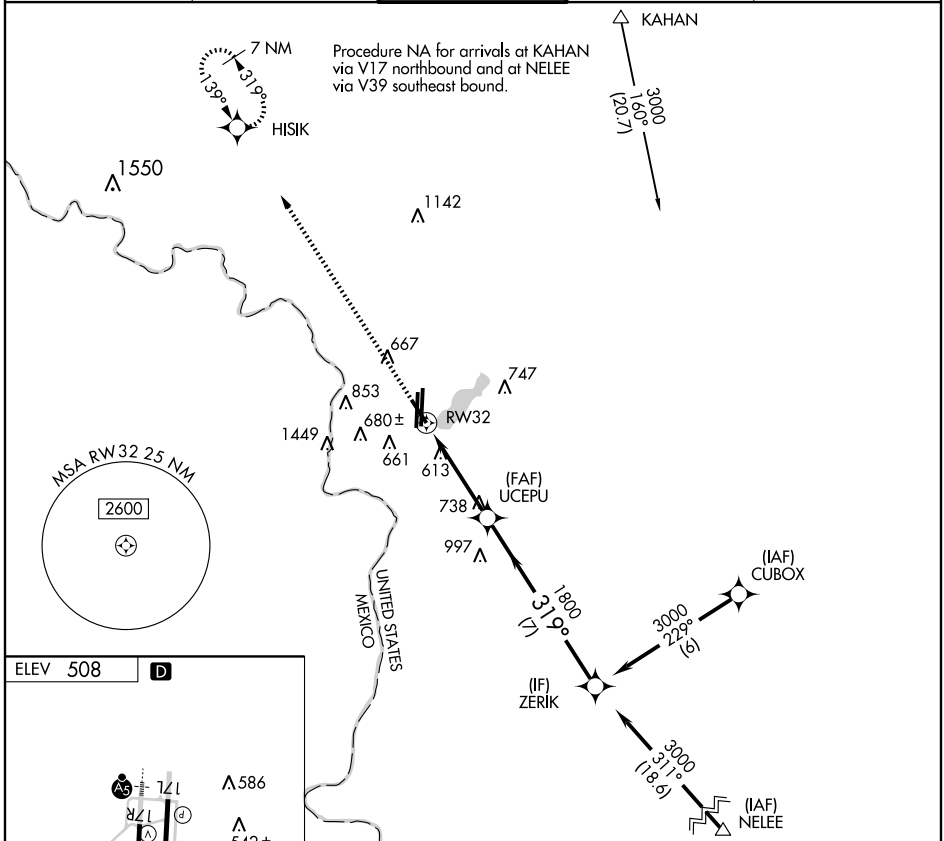
LAREDO INTL (L.R.D)

APP CRS <b>319°</b>	Rwy Idg <b>5928</b>
	TDZE <b>494</b>
	Apt Elev <b>508</b>

**▼** If local altimeter setting not received, use Hebbronville altimeter setting and increase all MDAs 120 feet. Circling NA west of Rwys 14 and 35L. DME/DME RNP-0.3 NA. Visibility reduction by helicopters NA.

**▲** MISSED APPROACH: Climb to 3000 direct HISIK and hold.

ATIS <b>125.775</b>	HOUSTON CENTER <b>127.8 307.2</b>	<b>LAREDO TOWER ★</b> <b>120.10 (CTAF) 257.9</b>	GND CON <b>121.8</b>	UNICOM <b>122.95</b>
------------------------	--------------------------------------	---	-------------------------	-------------------------



CATEGORY	A	B	C	D	E
LNAV MDA	900-1	406 (400-1)	900-1¼	406 (400-1¼)	900-1½ 406 (400-1½)
CIRCLING	960-1 452 (500-1)	980-1 472 (500-1)	980-1½ 472 (500-1½)	1060-2 552 (600-2)	1240-2½ 732 (800-2½)

SC-3, 22 OCT 2009 to 19 NOV 2009

SC-3, 22 OCT 2009 to 19 NOV 2009