


# RNAV (GPS) RWY 17R

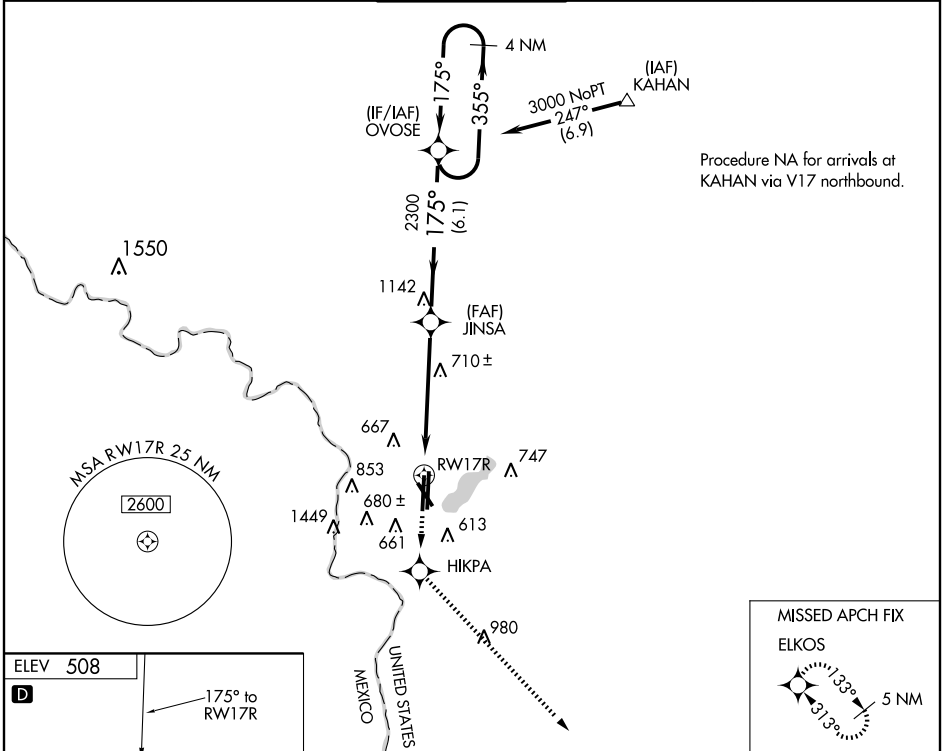
LAREDO INTL (L.R.D)

WAAS Ch <b>82599</b> <b>W17A</b>	APP CRS <b>175°</b>	Rwy Idg TDZE <b>504</b> Apt Elev <b>508</b>	<b>7711</b>
--	------------------------	---	-------------

**▽** DME/DME RNP-0.3 NA. BARO-VNAV NA below -16°C (4°F).  
**▲** For inoperative MALSR, increase LPV all Cats visibility to ¾, LNAV/VNAV Cat E visibility to 1½ mile, LNAV Cat E visibility to 1½ mile.  
**○** Circling NA west of runways 14 and 35L.

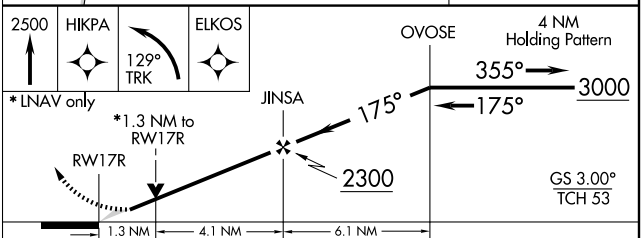
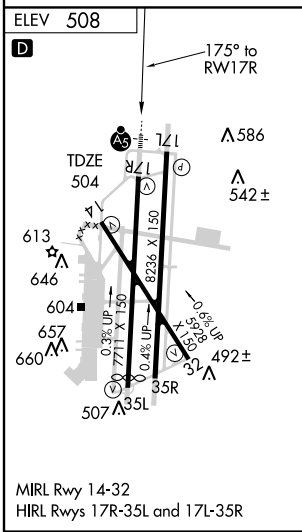
**MALSR**  
 MISSED APPROACH: Climb to 2500 direct HIKPA and via 129° track to ELKOS and hold.

ATIS <b>125.775</b>	HOUSTON CENTER <b>127.8 307.2</b>	LAREDO TOWER ★ <b>120.10</b> (CTAF) <b>257.9</b>	GND CON <b>121.8</b>	UNICOM <b>122.95</b>
------------------------	--------------------------------------	---	-------------------------	-------------------------



SC-3, 22 OCT 2009 to 19 NOV 2009

SC-3, 22 OCT 2009 to 19 NOV 2009



CATEGORY	A	B	C	D	E
LPV DA	754-½ 250 (300-½)				
LNAV/VNAV DA	953-1 449 (500-1)				
LNAV MDA	960-½	456 (500-½)	960-¾ 456 (500-¾)	960-1	456 (500-1)
CIRCLING	960-1½ 452 (500-1½)	980-1½	472 (500-1½)	1060-2 552 (600-2)	1240-2½ 732 (800-2½)