

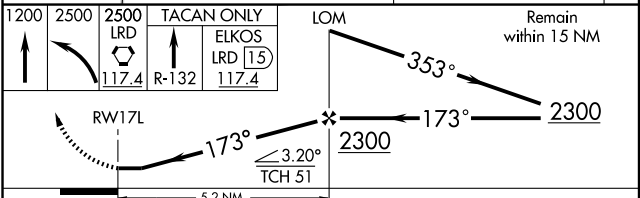
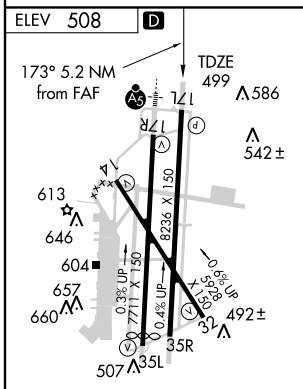
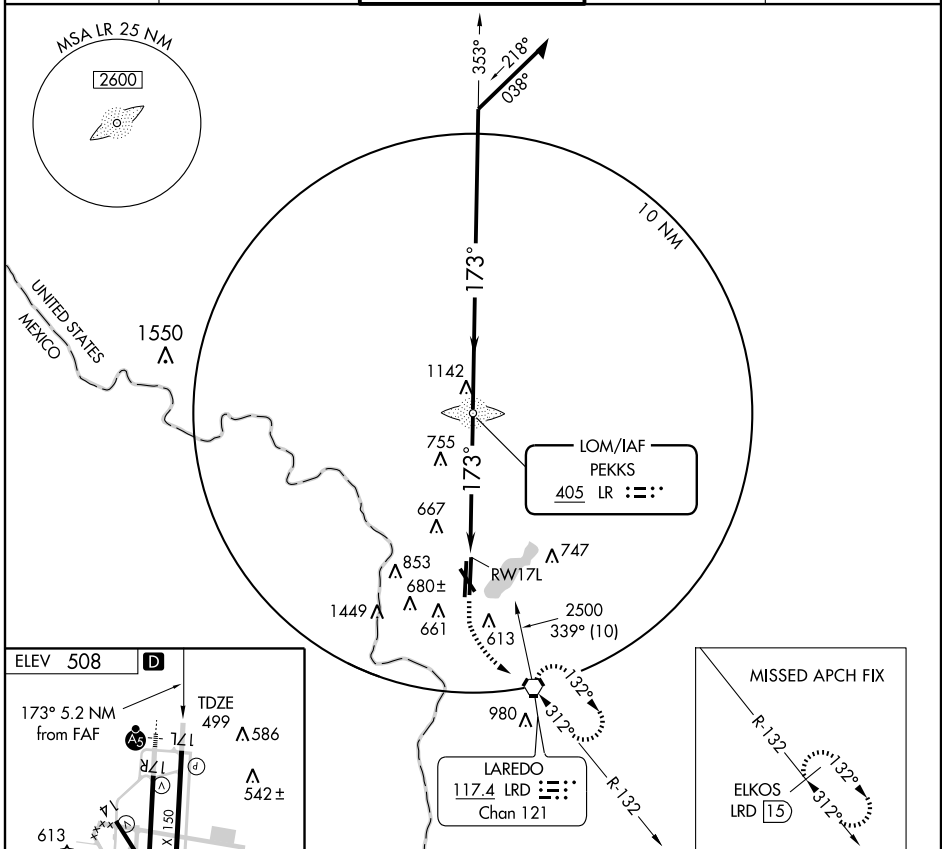
# NDB RWY 17L

LAREDO INTL (L.R.D)

LOM LR <b>405</b>	APP CRS <b>173°</b>	Rwy Idg TDZE Apt Elev	<b>8236</b> <b>499</b> <b>508</b>
----------------------	------------------------	-----------------------------	---

**⚠** Circling not authorized west of Rwy 14 and 35L.  
**⚠** MISSED APPROACH: Climb to 1200 then climbing left turn to 2500 direct LRD VORTAC and hold, continue climb-in-hold to 2500. (TACAN aircraft continue via LRD R-132 to ELKOS/LRD 15 DME and hold SE, right turn, 312° inbound.)

ATIS <b>125.775</b>	HOUSTON CENTER <b>127.8 307.2</b>	LAREDO TOWER * <b>120.1</b> (CTAF) <b>257.9</b>	GND CON <b>121.8</b>	UNICOM <b>122.95</b>
------------------------	--------------------------------------	--	-------------------------	-------------------------



MIRL Rwy 14-32  
HIRL Rwy 17R-35L and 17L-35R

FAF to MAP 5.2 NM

Knots	60	90	120	150	180
Min:Sec	5:12	3:28	2:36	2:05	1:44

CATEGORY	A		B		C	D	E
	S-17L	1060-1	561 (600-1)	1060-1½	561 (600-1½)	561 (600-1¾)	1060-2
CIRCLING	1060-1	552 (600-1)	1060-1½	552 (600-1½)	1060-2	1240-2½	732 (800-2½)

SC-3, 22 OCT 2009 to 19 NOV 2009

SC-3, 22 OCT 2009 to 19 NOV 2009