

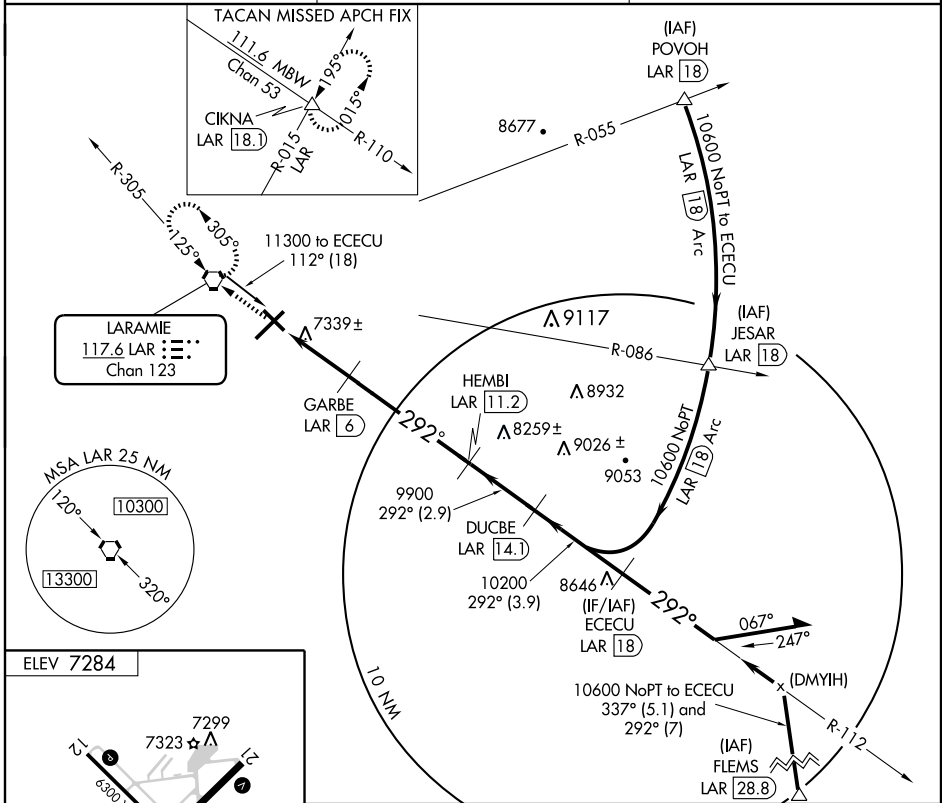
# VOR/DME or TACAN RWY 30

LARAMIE RGNL (L.A.R.)

VORTAC LAR <b>117.6</b> Chan <b>123</b>	APP CRS <b>292°</b>	Rwy Idg TDZE Apt Elev	<b>6300</b> <b>7278</b> <b>7284</b>
---	------------------------	-----------------------------	---

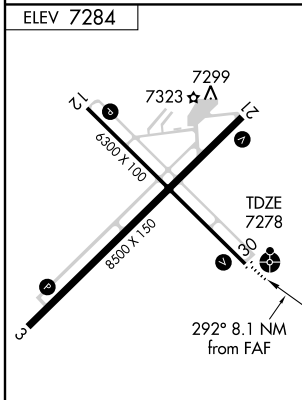
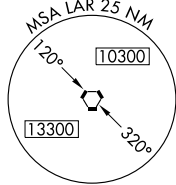
**ODALS** MISSED APPROACH: Climb to 9500 direct LAR VORTAC and hold, continue climb-in-hold to 9500 (TACAN aircraft continue climb to 10600 via LAR VORTAC R-015 to CIKNA INT/18.1 DME and hold north, left turns, 195° inbound.

ASOS <b>135.475</b>	DENVER CENTER <b>125.9 284.7</b>	UNICOM <b>123.05 (CTAF)</b>
------------------------	-------------------------------------	--------------------------------



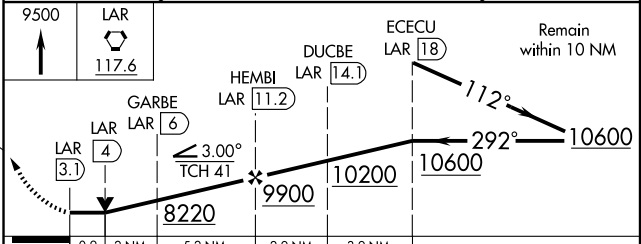
NW-1, 22 OCT 2009 to 19 NOV 2009

NW-1, 22 OCT 2009 to 19 NOV 2009



REIL Rwys 3, 12 and 21  
MIRL Rwys 3-21 and 12-30

Knots	60	90	120	150	180
Min:Sec					



CATEGORY	A	B	C	D
S-30	7600-¾ 322 (400-¾)			7600-1 322 (400-1)
CIRCLING	7660-1 376 (400-1)	7740-1 456 (500-1)	7740-1½ 456 (500-1½)	7840-2 556 (600-2)

# VOR/DME or TACAN RWY 30