

LARAMIE, WYOMING

AL-225 (FAA)

# VOR/DME or TACAN RWY 12

LARAMIE RGNL (L.A.R)

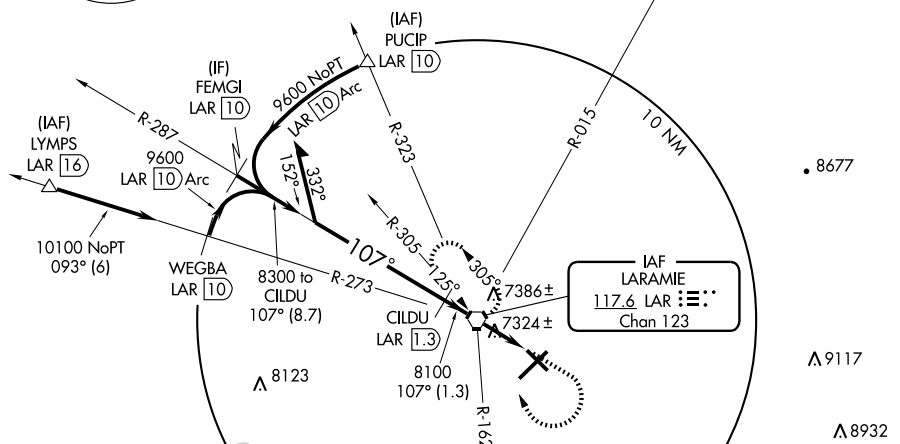
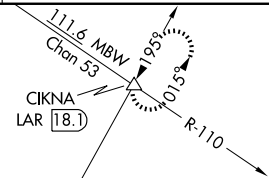
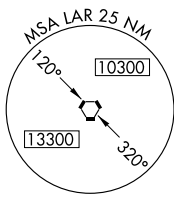
|   |                        |                             |   |
|---|------------------------|-----------------------------|---|
| VORTAC LAR<br><b>117.6</b><br>Chan <b>123</b> | APP CRS<br><b>107°</b> | Rwy Idg<br>TDZE<br>Apt Elev | <b>6300</b><br><b>7275</b><br><b>7284</b> |
|---|------------------------|-----------------------------|---|

**MISSED APPROACH:** Climb to 7700 then climbing right turn to 9500 direct LAR VORTAC and hold, continue climb-in-hold to 9500 (TACAN aircraft continue climb to 10600 via LAR VORTAC R-015 to CIKNA/18.1 DME and hold north, left turn, 195° inbound).

ASOS  
**135.475**

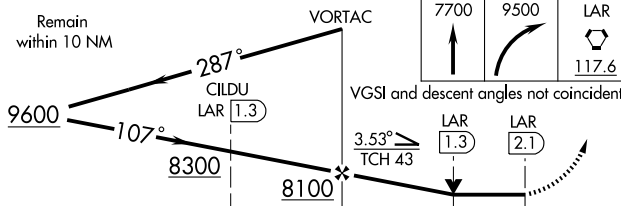
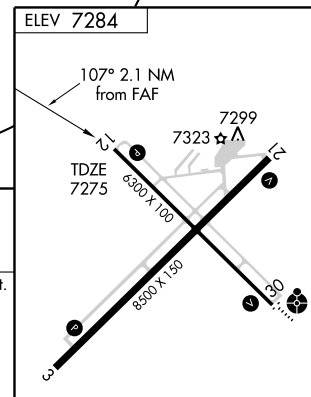
DENVER CENTER  
**125.9 284.7**

UNICOM  
**123.05 (CTAF)**



NW-1, 22 OCT 2009 to 19 NOV 2009

NW-1, 22 OCT 2009 to 19 NOV 2009



| CATEGORY | A                     | B                     | C                       | D                     |
|----------|-----------------------|-----------------------|-------------------------|-----------------------|
| S-12     |                       | 7580-1                | 305 (300-1)             |                       |
| CIRCLING | 7660-1<br>376 (400-1) | 7740-1<br>456 (500-1) | 7740-1½<br>456 (500-1½) | 7840-2<br>556 (600-2) |

|                         |                   |
|-------------------------|-------------------|
| REIL Rwy 3, 12 and 21   |                   |
| MIRL Rwy 3-21 and 12-30 |                   |
| Knots                   | 60 90 120 150 180 |
| Min:Sec                 |                   |

LARAMIE, WYOMING  
Amdt 6 07354

41°19'N - 105°40'W

LARAMIE RGNL (L.A.R)

# VOR/DME or TACAN RWY 12