

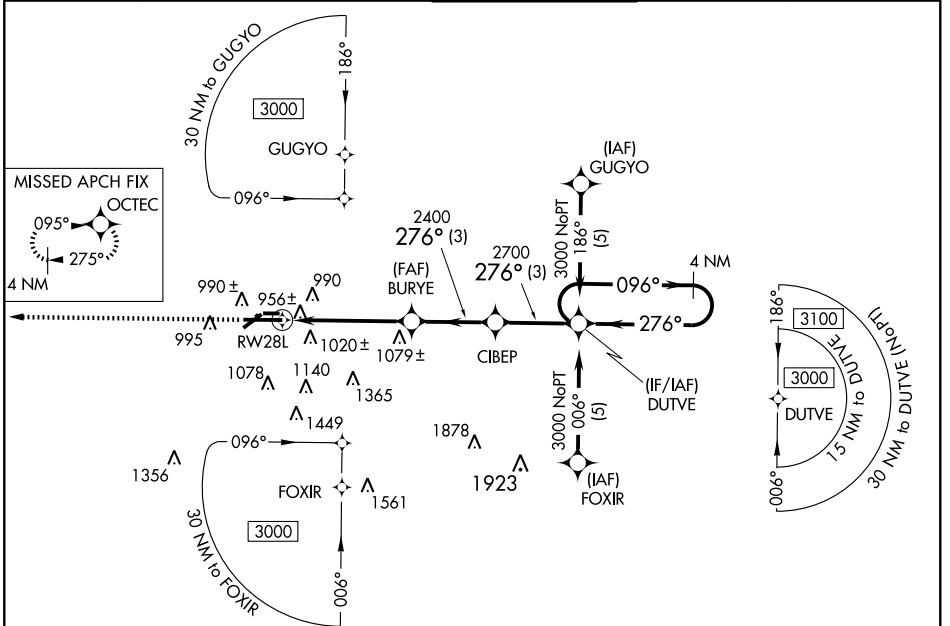
# RNAV (GPS) RWY 28L

LANSING/CAPITAL CITY (LAN)

WAAS CH <b>40414</b> <b>W28A</b>	APP CRS <b>276°</b>	Rwy Idg TDZE Apt Elev	<b>7251</b> <b>851</b> <b>861</b>
--	------------------------	-----------------------------	---

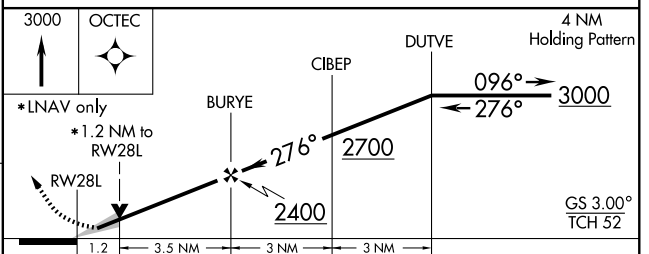
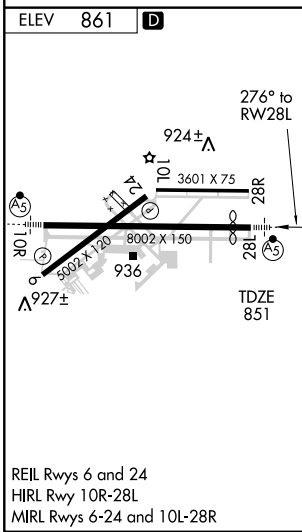
ASR	For uncompensated Baro-VNAV systems, LNAV/VNAV NA below -16°C (4°F) or above 47°C (116°F). DME/DME RNP-0.3 NA.	MALSR	MISSED APPROACH: Climb to 3000 direct OCTEC and hold.
-----	--	-------	---

ATIS <b>119.75</b>	LANSING APP CON <b>133,475 226.4</b> (NORTH) <b>118,665 226.4</b> (SOUTH)	LANSING TOWER <b>119.9 240.9</b>	GND CON <b>121.9</b>	CLNC DEL <b>123.675</b>
-----------------------	---	-------------------------------------	-------------------------	----------------------------



EC-1, 22 OCT 2009 to 19 NOV 2009

EC-1, 22 OCT 2009 to 19 NOV 2009



CATEGORY	A	B	C	D
LPV DA		1051/24	200 (200-½)	
LNAV/VNAV DA		1370/60	519 (600-1¼)	
LNAV MDA	1280/24	429 (500-½)	1280/40 429 (500-¾)	1280/50 429 (500-1)
CIRCLING	1380-1	519 (600-1)	1380-1½ 519 (600-1½)	1440-2 579 (600-2)