

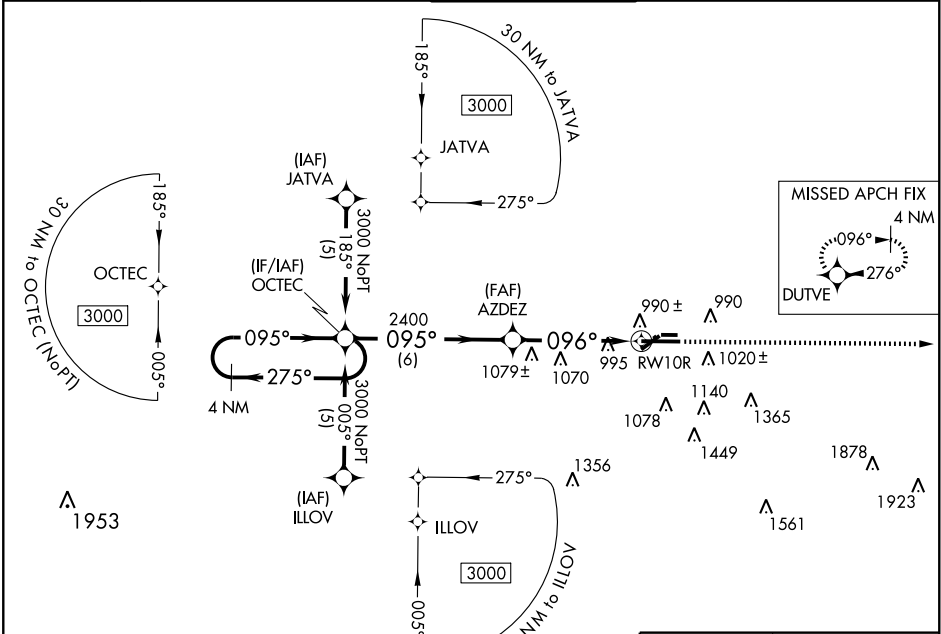
RNAV (GPS) RWY 10R

LANSING/CAPITAL CITY (LAN)

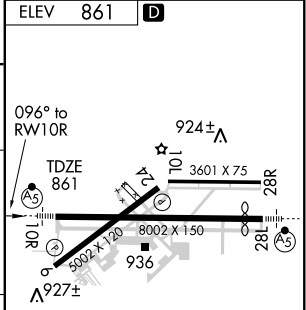
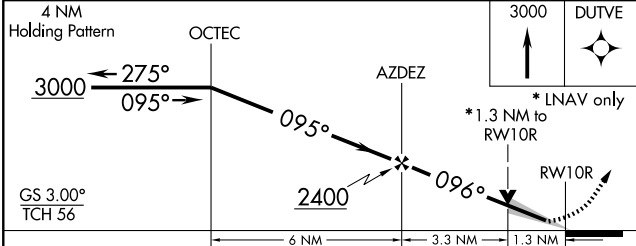
WAAS CH 61314 W10A	APP CRS 096°	Rwy Idg TDZE Apt Elev	7251 861 861
--	------------------------	-----------------------------	---

ASR	For uncompensated Baro-VNAV systems, LNAV/VNAV NA below -16°C (4°F) or above 47°C (116°F). DME/DME RNP-0.3 NA.	MALSR	MISSED APPROACH: Climb to 3000 direct DUTVE and hold.
-----	--	-------	---

ATIS 119.75	LANSING APP CON 133.475 226.4 (NORTH) 118.65 226.4 (SOUTH)	LANSING TOWER 119.9 240.9	GND CON 121.9	CLNC DEL 123.675
-----------------------	--	-------------------------------------	-------------------------	----------------------------



ELEV	861	D
------	-----	----------



CATEGORY	A	B	C	D
LPV DA		1061/24	200 (200-½)	
LNAV/VNAV DA		1290/50	429 (500-1)	
LNAV MDA	1320/24	459 (500-½)	1320/40 459 (500-¾)	1320/50 459 (500-1)
CIRCLING	1380-1	519 (600-1)	1380-1½ 519 (600-1½)	1440-2 579 (600-2)

REIL Rwy 6 and 24
HIRL Rwy 10R-28L
MIRL Rwy 6-24 and 10L-28R

EC-1, 22 OCT 2009 to 19 NOV 2009

EC-1, 22 OCT 2009 to 19 NOV 2009