

VOR or VOR/DME or TACAN Y RWY 33

VORTAC RBV 113.8 Chan 85	APCH CRS 337°	Rwy Idg TDZE Arpt Elev	5001 88 101
--	-------------------------	------------------------------	--

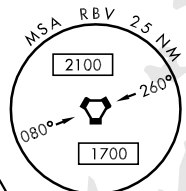
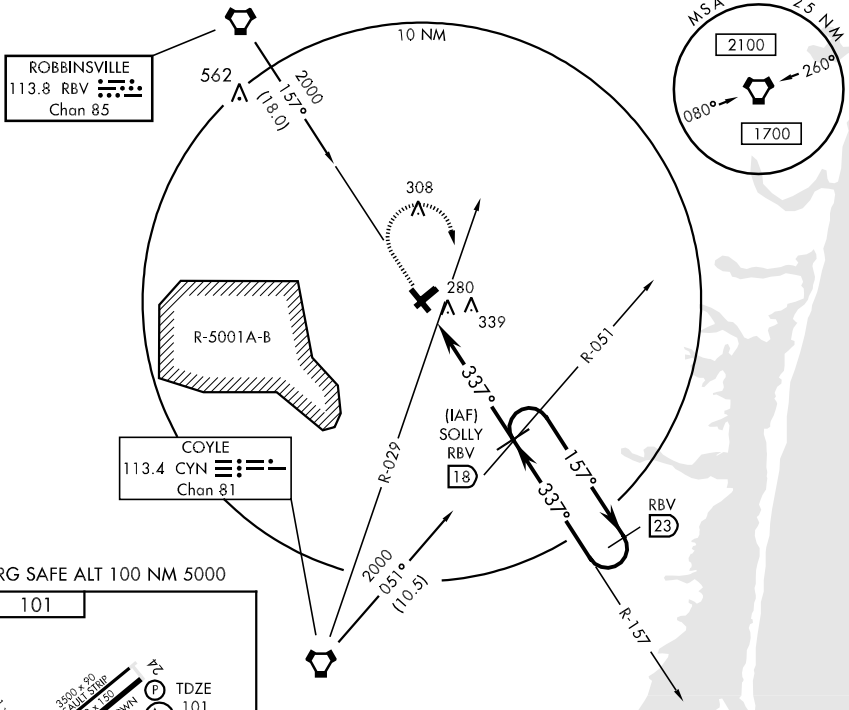
AL-223 [USN] LAKEHURST NAES (MAXFIELD FLD) (KNEL)

MISSED APPROACH: Climb to 1000 via RBV R-157, then climbing right turn to 2000, intercept RBV R-157 outbound to SOLLY and hold.

MC GUIRE APP CON
120.25 363.8

LAKEHURST TOWER ★
127.775 360.2

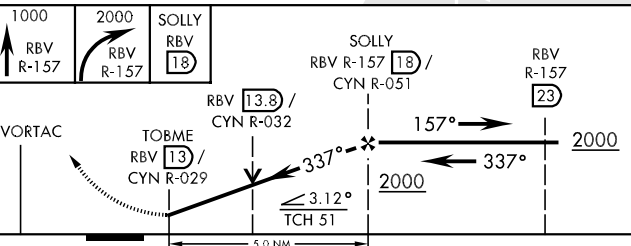
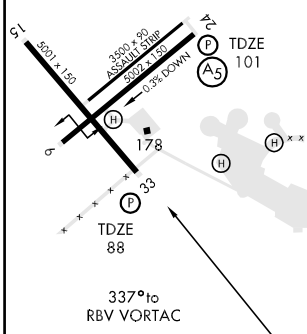
GND CON
118.375 307.05



NE-2, 22 OCT 2009 to 19 NOV 2009

NE-2, 22 OCT 2009 to 19 NOV 2009

EMERG SAFE ALT 100 NM 5000
ELEV 101



HIRL Rwy 6-24, 15-33

FAF to MAP 3 NM					
Knots	60	90	120	150	180
Min:Sec	5:00	3:20	2:30	2:00	1:40

CATEGORY	A	B	C	D
S-33	600-1 512 (500-1)	600-1 512 (500-1)	600-1½ 512 (500-1½)	600-1¾ 512 (500-1¾)
CIRCLING	600-1 499 (500-1)	640-1 539 (600-1)	640-1½ 539 (600-1½)	660-2 559 (600-2)

VOR or VOR/DME or TACAN Y RWY 33