

LAKEHURST, NEW JERSEY

VOR RWY 24

VOR/DME COL 115.4 Chan 101	APCH CRS 218°	Rwy ldg TDZE Arpt Elev 5002 101 101
--	-------------------------	---

AL-223 [USN]

LAKEHURST NAES (MAXFIELD FLD) (KNEL)

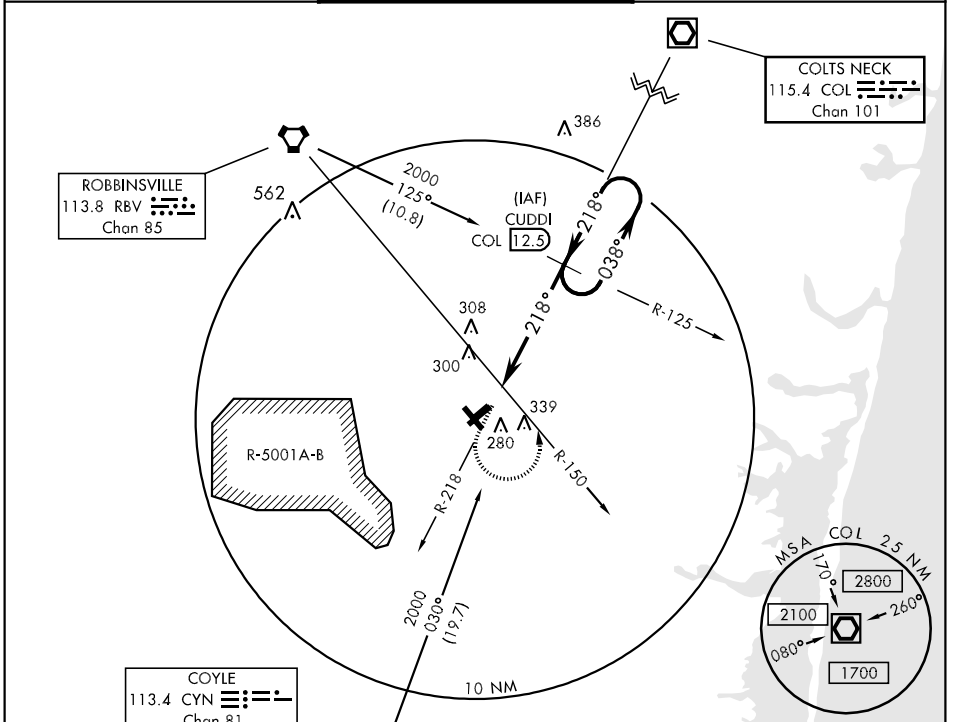


MISSED APPROACH: Climb to 1000 via COL R-218, then climbing left turn to 2000, intercept COL R-218 to CUDDI and hold.

MC GUIRE APP CON
120.25 363.8

LAKEHURST TOWER ★
127.775 360.2

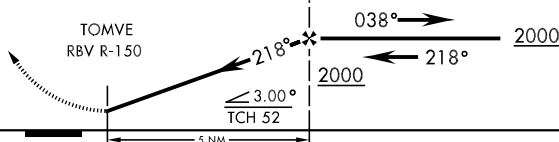
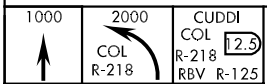
GND CON
118.375 307.05



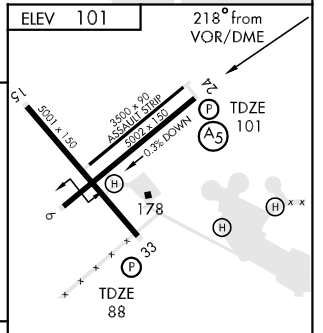
NE-2, 22 OCT 2009 to 19 NOV 2009

NE-2, 22 OCT 2009 to 19 NOV 2009

EMERG SAFE ALT 100 NM 5000



CATEGORY	A	B	C	D
S-24	560-1 459 (500-1)	560-1 459 (500-1)	560-1½ 459 (500-1¼)	560-1½ 459 (500-1½)
CIRCLING	600-1 499 (500-1)	640-1 539 (600-1)	640-1½ 539 (600-1½)	660-2 559 (600-2)



HIRL Rwy 6-24, 15-33

FAF to MAP 5 NM					
Knots	60	90	120	150	180
Min:Sec	5:00	3:20	2:30	2:00	1:40

LAKEHURST, NEW JERSEY
Amdt 1 09239

40°02'N-74°21'W

LAKEHURST NAES (MAXFIELD FLD) (KNEL)

VOR RWY 24