

TACAN NEL Chan <b>55</b>	APCH CRS <b>248°</b>	Rwy Idg TDZE Arpt Elev <b>5002</b> <b>101</b> <b>101</b>
-----------------------------	-------------------------	---

AL-223 [USN]

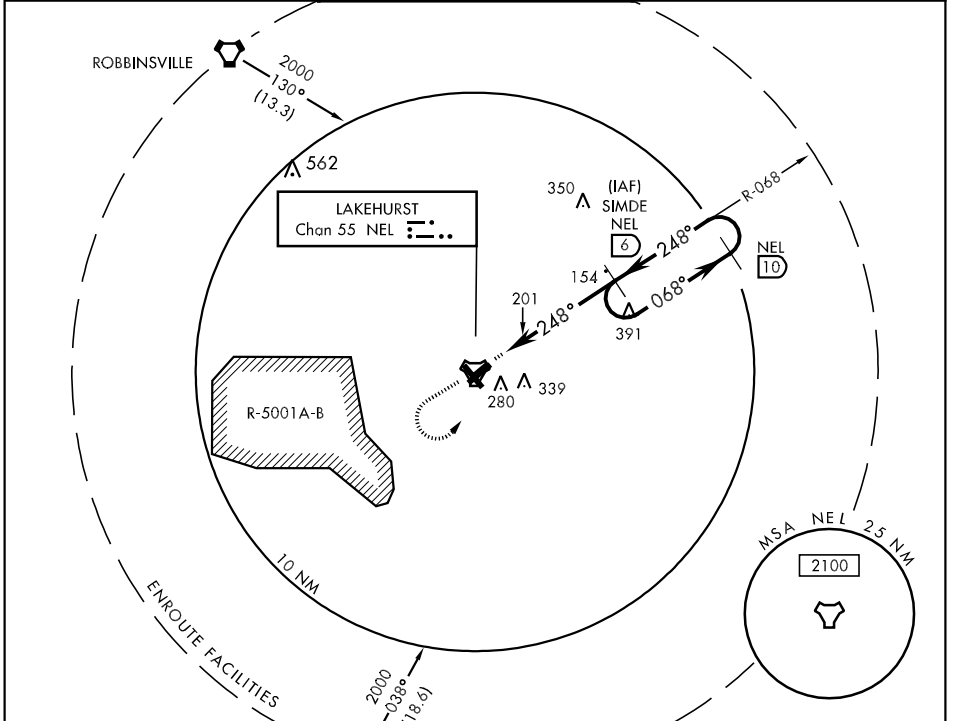
LAKEHURST NAES (MAXFIELD FLD) (KNEL)

\* When ALS inop, increase vis CAT ABC to 1 mile, CAT D to 1½ miles.



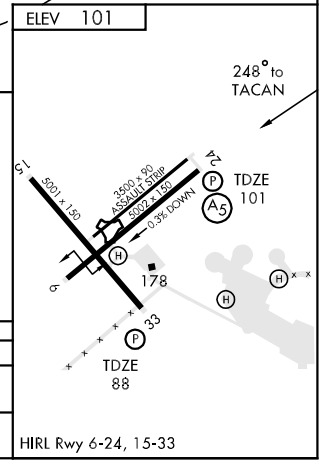
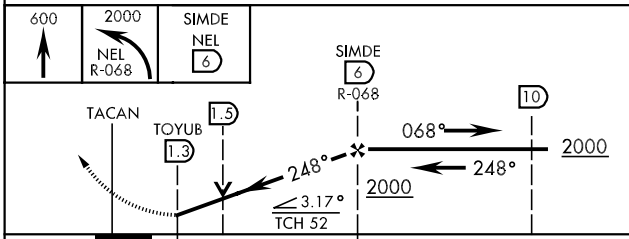
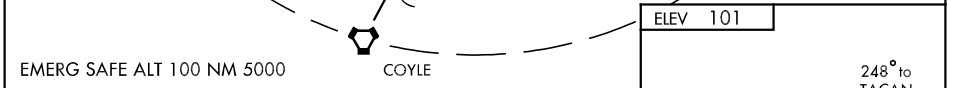
MISSED APPROACH: Climb to 600, then climbing left turn to 2000, intercept NEL R-068 to SIMDE and hold.

MC GUIRE APP CON <b>120.25 363.8</b>	LAKEHURST TOWER * <b>127.775 360.2</b>	GND CON <b>118.375 307.05</b>
---	---	----------------------------------



NE-2, 22 OCT 2009 to 19 NOV 2009

NE-2, 22 OCT 2009 to 19 NOV 2009



CATEGORY	A	B	C	D
S-24 *	460-½ 359 (400-½)	460-¾ 359 (400-¾)	460-1 359 (400-1)	460-1½ 359 (400-1½)
CIRCLING	600-1 499 (500-1)	640-1 539 (600-1)	640-1½ 539 (600-1½)	660-2 559 (600-2)