

| | | |
|-------------|-----------|-------------|
| APCH CRS | Rwy Idg | 5002 |
| 242° | TDZE | 101 |
| | Arpt Elev | 101 |

AL-223 [USN]

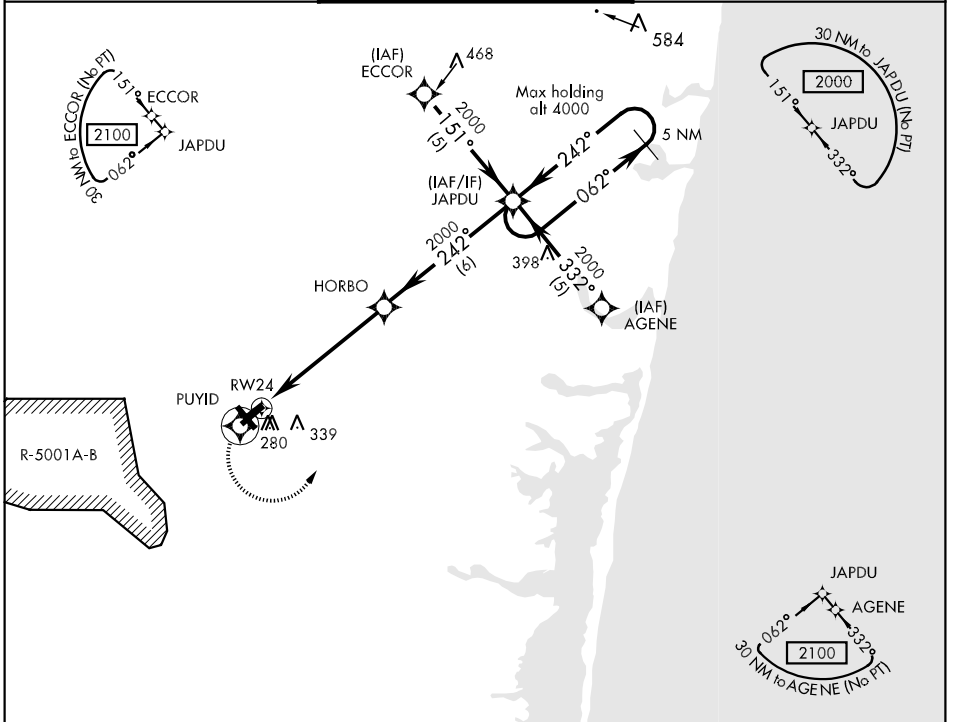
LAKEHURST NAES (MAXFIELD FLD) (KNEL)

* When ALS inop, increase vis CAT ABC to 1 mile, CAT D to 1/4 miles, DME/DME RNP-0.3 NA.



MISSED APPROACH: Climb to 2000 direct PUYID, then turn left direct JAPDU and hold.

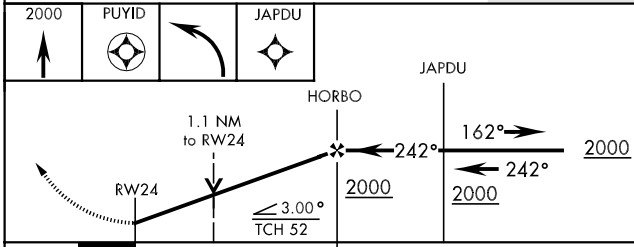
| | | |
|---|---|----------------------------------|
| MC GUIRE APP CON 120.25 363.8 | LAKEHURST TOWER ★ 127.775 360.2 | GND CON 118.375 307.05 |
|---|---|----------------------------------|



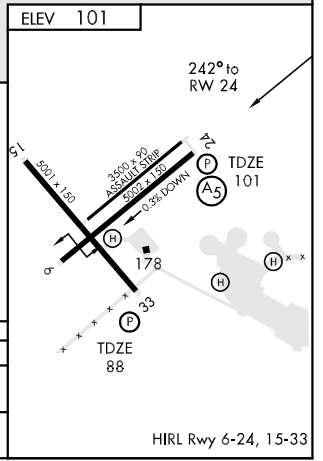
NE-2, 22 OCT 2009 to 19 NOV 2009

NE-2, 22 OCT 2009 to 19 NOV 2009

EMERG SAFE ALT 100 NM 5000



| CATEGORY | A | B | C | D |
|------------|-----------------------|-----------------------|------------------------------|-----------------------|
| LNNAV MDA* | 500-1/2 399 (400-1/2) | 500-3/4 399 (400-3/4) | 500-3/4 399 (400-3/4) | 500-3/4 399 (400-3/4) |
| CIRCLING | 600-1 499 (500-1) | 640-1 539 (600-1) | 640-1 1/2 539 (600-1 1/2) | 660-2 559 (600-2) |



HIRL Rwy 6-24, 15-33