

WAAS CH <b>82103</b> <b>W28A</b>	APP CRS <b>280°</b>	Rwy Idg <b>6600</b> TDZE <b>598</b> Apt Elev <b>606</b>
--	------------------------	---

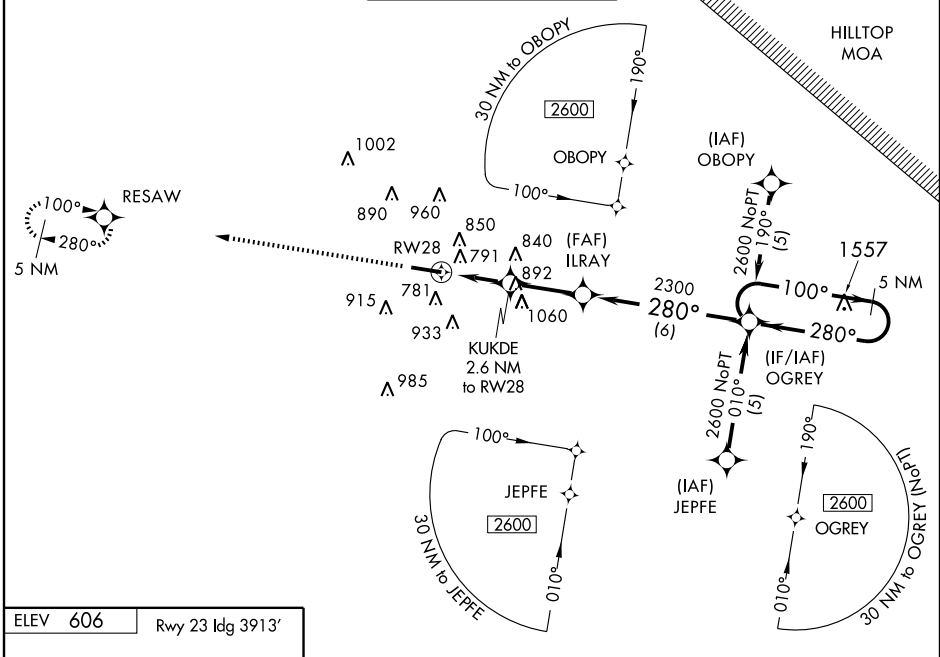
# RNAV (GPS) RWY 28

LAFAYETTE / PURDUE UNIVERSITY (LAF)

▼ If local altimeter setting not received, use Vermilion Rgnl altimeter setting and increase all DAs 89 feet, all MDAs 100 feet. Baro-VNAV NA when using Vermilion Rgnl altimeter setting. For uncompensated Baro-VNAV systems, LNAV/VNAV NA below -16°C (4°F) or above 47°C (116°F). DME/DME RNP-0.3 NA. Visibility reduction by helicopters NA.

▲ MISSED APPROACH: Climb to 2600 direct RESAW and hold.

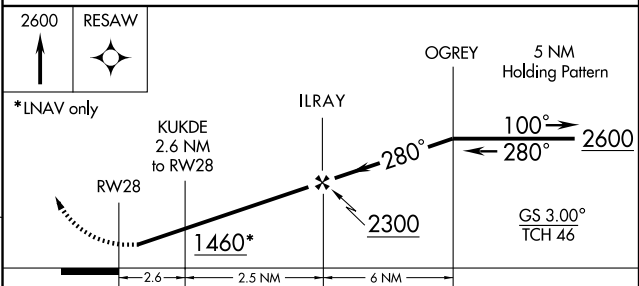
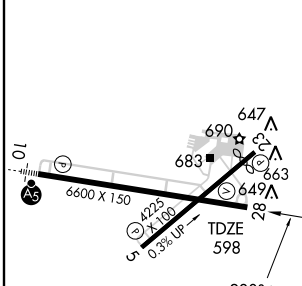
ATIS <b>127.75</b>	CHICAGO CENTER <b>123.85 343.95</b>	LAFAYETTE TOWER ★ <b>119.6 (CTAF) 393.0</b>	GND CON <b>121.9 393.0</b>	UNICOM <b>122.95</b>
-----------------------	--	--	-------------------------------	-------------------------



EC-2, 22 OCT 2009 to 19 NOV 2009

EC-2, 22 OCT 2009 to 19 NOV 2009

ELEV <b>606</b>	Rwy 23 Idg 3913'
-----------------	------------------



CATEGORY	A	B	C	D
LPV DA		856-1	258 (300-1)	
LNAV/VNAV DA		1125-1¾	527 (600-1¾)	
LNAV MDA	1060-1	462 (500-1)	1060-1¼ 462 (500-1¼)	1060-1½ 462 (500-1½)
CIRCLING	1160-1	554 (600-1)	1160-1½ 554 (600-1½)	1320-2¼ 714 (800-2¼)

HIRL Rwy 10-28  
REIL Rws 5, 23 and 28  
MIRL Rwy 5-23