

# VOR RWY 13

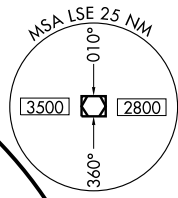
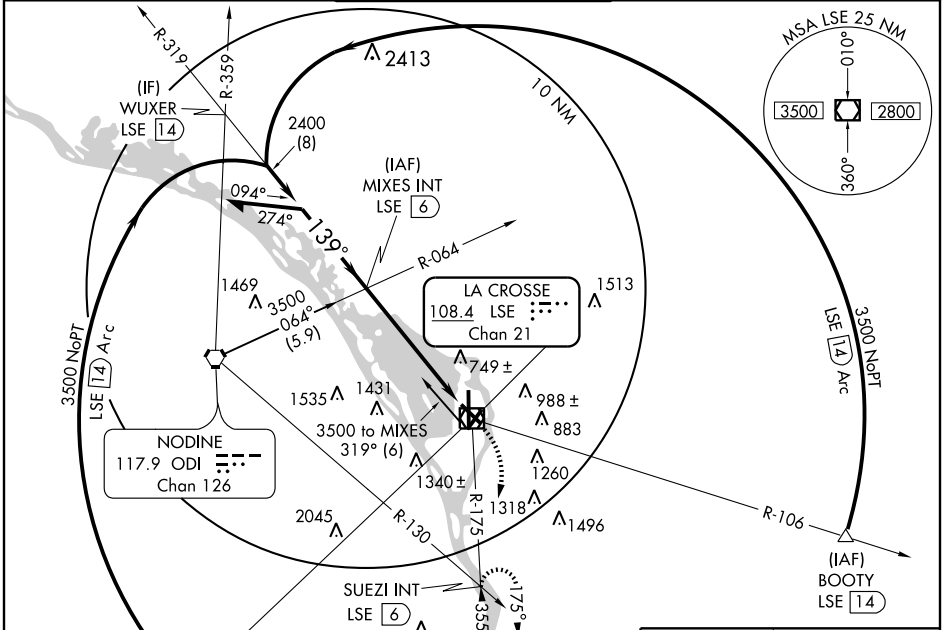
LA CROSSE MUNI (LSE)

VOR/DME LSE <b>108.4</b> Chan <b>21</b>	APP CRS <b>139°</b>	Rwy Idg <b>5300</b> TDZE <b>655</b> Apt Elev <b>655</b>
---	------------------------	---

Visibility reduction by helicopters NA. When local altimeter setting not received, use Winona altimeter setting and increase all MDA 60 feet, increase S-13 Cat. C and D visibility ¼ mile, increase Circling Cat. C visibility ¼ mile.

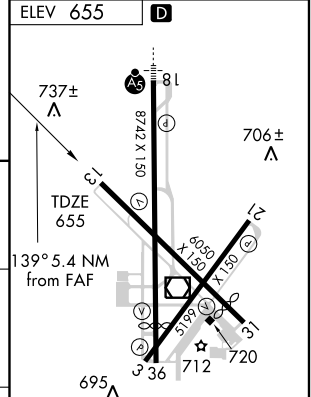
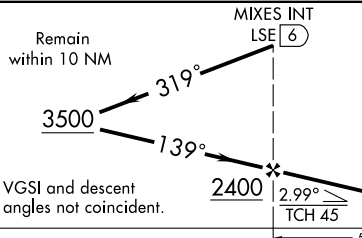
MISSED APPROACH: Climb to 1700 when climbing right turn to 3100 via LSE VOR/DME R-175 to SUEZI Int/LSE 6 DME and hold, continue climb-in-hold to 3100.

ATIS <b>124.95</b>	MINNEAPOLIS CENTER <b>128.6 363.0</b>	LA CROSSE TOWER ★ <b>118.45 (CTAF) 251.075</b>	GND CON <b>121.8</b>	UNICOM <b>122.95</b>
-----------------------	--	---	-------------------------	-------------------------



NODINE  
117.9 ODI  
Chan 126

1700	3100	SUEZI INT
↑	↘	
	LSE R-175	
	108.4	



CATEGORY	A	B	C	D
S-13	1120-1	465 (500-1)	1120-1¼ 465 (500-1¼)	1120-1½ 465 (500-1½)
CIRCLING	1180-1	525 (600-1)	1440-2¼ 785 (800-2¼)	1780-3 1125 (1200-3)

FAF to MAP 5.4 NM					
Knots	60	90	120	150	180
Min:Sec	5:24	3:36	2:42	2:10	1:48

EC-3, 22 OCT 2009 to 19 NOV 2009

EC-3, 22 OCT 2009 to 19 NOV 2009