

# RNAV (GPS) RWY 36

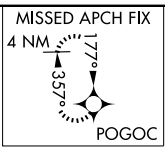
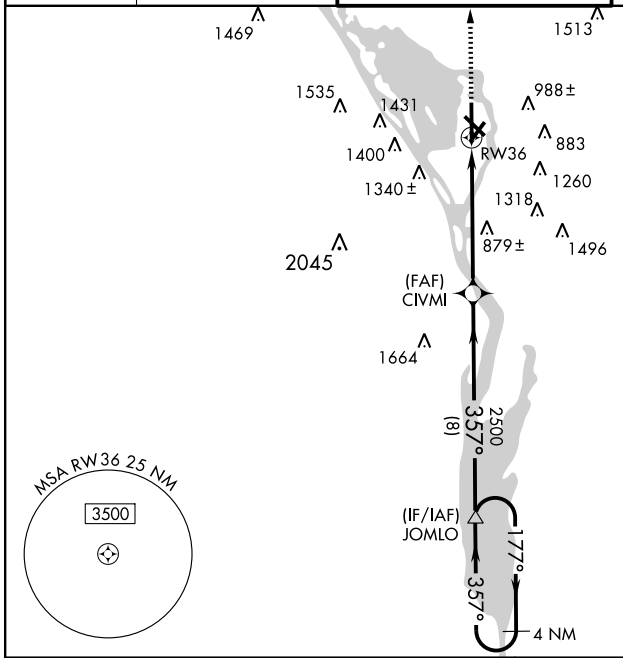
LA CROSSE MUNI (LSE)

WAAS CH <b>86509</b> <b>W36A</b>	APP CRS <b>357°</b>	Rwy Idg <b>7611</b> TDZE <b>653</b> Apt Elev <b>655</b>
--	------------------------	---

▼  
▲  
For uncompensated Baro-VNAV systems, LNAV/VNAV NA below -16° C (4° F) or above 47° C (116° F). DME/DME RNP-0.3 NA. Baro-VNAV and VDP NA when using Winona altimeter setting. When local altimeter setting not received, use Winona altimeter setting and increase all DA 53 feet, increase LPV all Cats. visibility ¼ mile and LNAV/VNAV all Cats. visibility ¼ mile, increase all MDA 60 feet and LNAV Cats. C/D visibility ¼ mile and Circling Cat. C visibility ¼ mile.

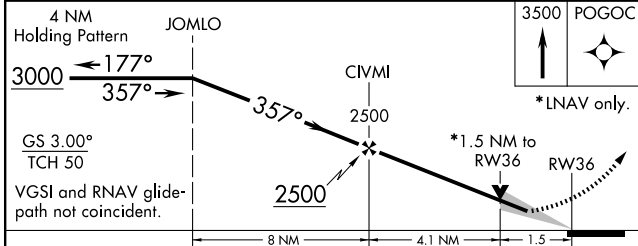
MISSED APPROACH:  
Climb to 3500 direct  
POGOC and hold.

ATIS <b>124.95</b>	MINNEAPOLIS CENTER <b>128.6 363.0</b>	LA CROSSE TOWER * <b>118.45 (CTAF) 251.075</b>	GND CON <b>121.8</b>	UNICOM <b>122.95</b>
-----------------------	--	---	-------------------------	-------------------------



EC-3, 22 OCT 2009 to 19 NOV 2009

EC-3, 22 OCT 2009 to 19 NOV 2009



CATEGORY	A	B	C	D
LPV DA	953-1		300 (300-1)	
LNAV/VNAV DA	1203-2		550 (600-2)	
LNAV MDA	1140-1	487 (500-1)	1140-1½ 487 (500-1¼)	1140-1½ 487 (500-1½)
CIRCLING	1140-1	485 (500-1)	1440-2¼ 785 (800-2¼)	1780-3 1125 (1200-3)

