

RNAV (GPS) RWY 18

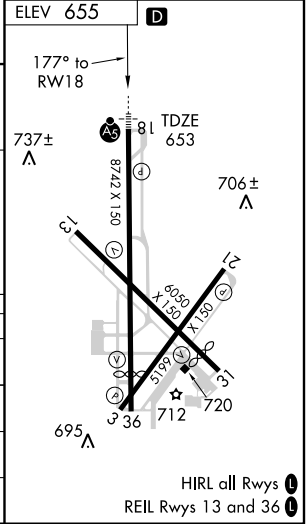
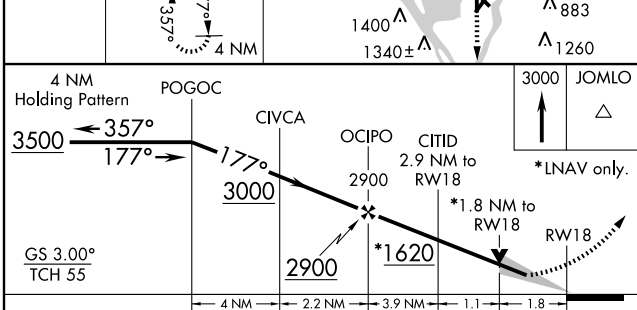
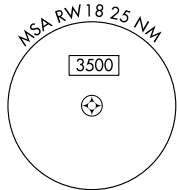
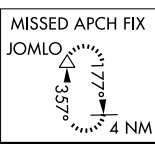
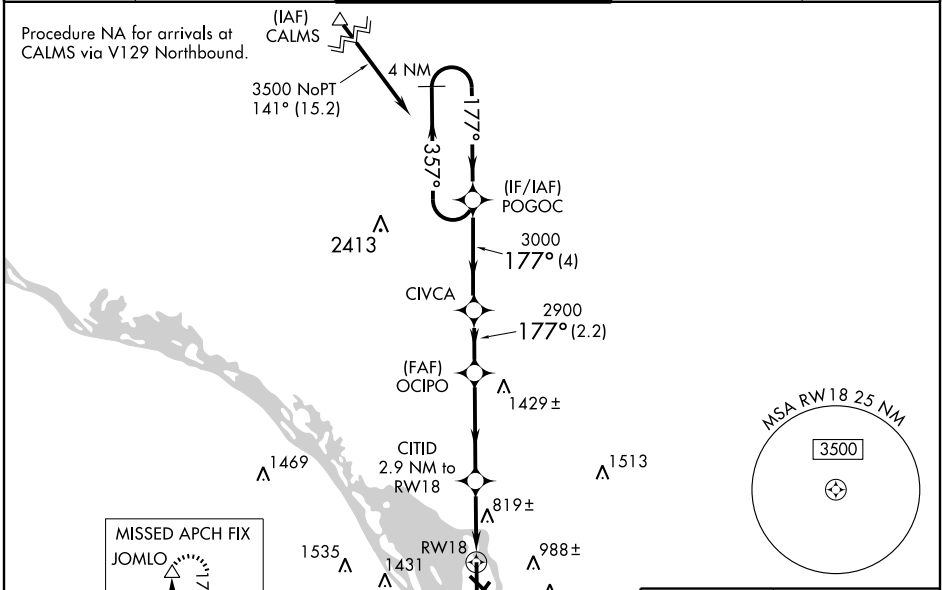
LA CROSSE MUNI (LSE)

WAAS CH 72809 W18A	APP CRS 177°	Rwy Idg TDZE 653 Apt Elev 655	8742
--	------------------------	---	-------------

Baro-VNAV NA when using Winona altimeter setting. For uncompensated Baro-VNAV systems, LNAV/VNAV NA below -16° C (4° F) or above 48° C (118° F). DME/DME RNP-0.3 NA. When local altimeter setting not received, use Winona altimeter setting and increase all DA 53 feet, increase LNAV/VNAV all Cats. visibility ¼ mile, increase all MDA 60 feet and Circling Cat. C visibility ¼ mile. For inoperative MALSR, increase LPV all Cats. visibility ½ mile. LNAV minimums NA with Winona altimeter setting.

MALSR 	MISSED APPROACH: Climb to 3000 direct JOMLO and hold.
-----------	--

ATIS 124.95	MINNEAPOLIS CENTER 128.6 363.0	LA CROSSE TOWER * 118.45 (CTAF) 251.075	GND CON 121.8	UNICOM 122.95
-----------------------	--	---	-------------------------	-------------------------



CATEGORY	A	B	C	D
LPV DA	925-½ 272 (300-½)			
LNAV/VNAV DA	1204-1½ 551 (600-1½)			
LNAV MDA	1360-½ 707 (800-½)	1360-1½ 707 (800-1½)	1360-1¾ 707 (800-1¾)	1360-1¾ 707 (800-1¾)
CIRCLING	1360-1 705 (800-1)	1440-2¼ 785 (800-2¼)	1780-3 1125 (1200-3)	

EC-3, 22 OCT 2009 to 19 NOV 2009

EC-3, 22 OCT 2009 to 19 NOV 2009