


NDB RWY 18

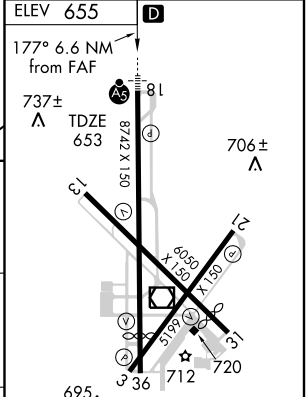
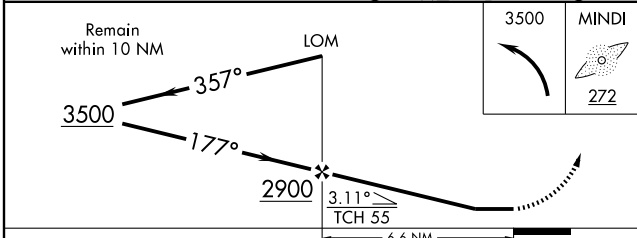
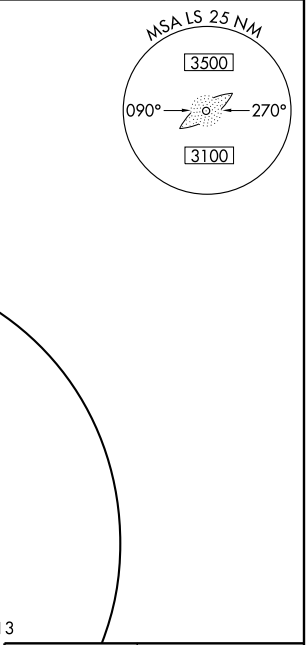
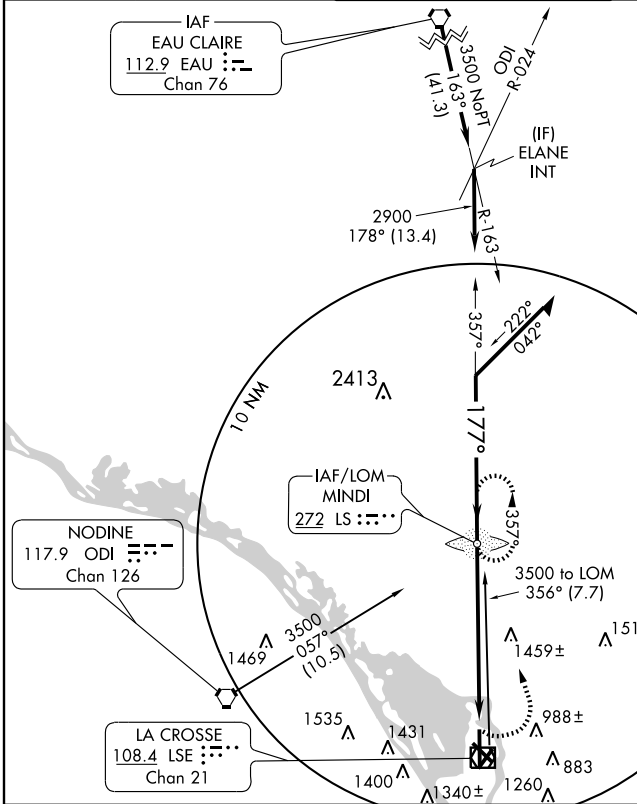
LA CROSSE MUNI (LSE)

LOM LS 272	APP CRS 177°	Rwy Idg 8742
		TDZE 653
		Apt Elev 655


⚠ When local altimeter not received, use Winona altimeter setting and increase all MDA 60 feet. Inoperative table does not apply to S-18 Cat. A.


MALS  MISSED APPROACH: Climbing left turn to 3500 direct MINDI LOM and hold.

ATIS 124.95	MINNEAPOLIS CENTER 128.6 363.0	LA CROSSE TOWER ★ 118.45 (CTAF) 251.075	GND CON 121.8	UNICOM 122.95
-----------------------	--	---	-------------------------	-------------------------



CATEGORY	A	B	C	D
S-18	1800-1¼ 1147 (1200-1¼)	1800-1½ 1145 (1200-1½)	1800-2½ 1147 (1200-2½)	1800-2¾ 1147 (1200-2¾)
CIRCLING	1800-1¼ 1145 (1200-1¼)	1800-1½ 1145 (1200-1½)	1800-3 1145 (1200-3)	

HIRL all Rws 

REIL Rws 13 and 36 

FAF to MAP 6.6 NM

Knots	60	90	120	150	180
Min:Sec	6:36	4:24	3:18	2:38	2:12

EC-3, 22 OCT 2009 to 19 NOV 2009

EC-3, 22 OCT 2009 to 19 NOV 2009