

ILS or LOC RWY 18

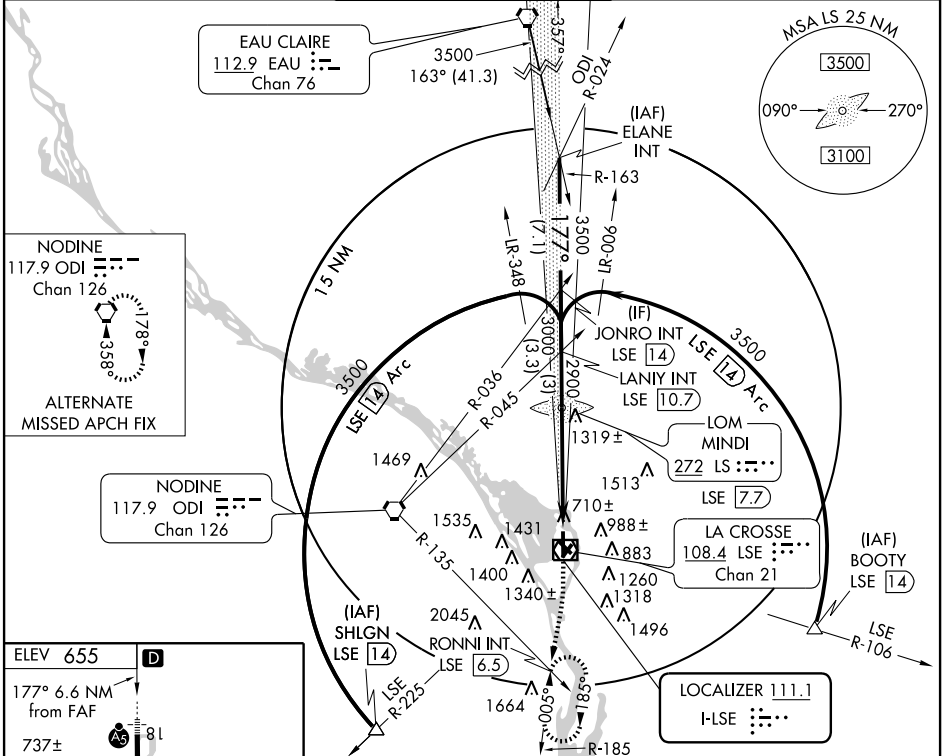
LA CROSSE MUNI (LSE)

LOC I-LSE 111.1	APP CRS 177°	Rwy Idg 8742
		TDZE 653
		Apt Elev 655

⚠ When local altimeter not received, use Winona altimeter setting and increase all DA 53 feet, all MDA 60 feet, increase visibility Circling Cat. C¼.

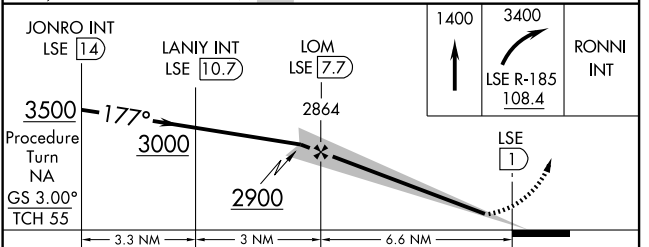
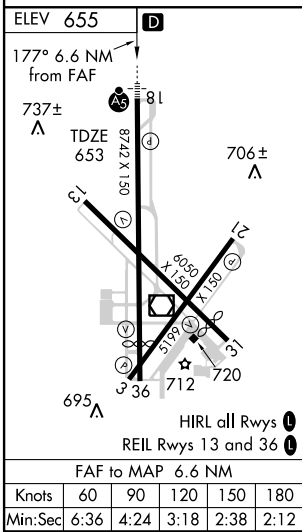
MALSR MISSED APPROACH: Climb to 1400 then climbing right turn to 3400 via LSE VOR/DME R-185 to RONNI Int/LSE 6.5 DME and hold.

ATIS 124.95	MINNEAPOLIS CENTER 128.6 363.0	LA CROSSE TOWER ★ 118.45 (CTAF) 251.075	GND CON 121.8	UNICOM 122.95
-----------------------	--	---	-------------------------	-------------------------



EC-3, 22 OCT 2009 to 19 NOV 2009

EC-3, 22 OCT 2009 to 19 NOV 2009



CATEGORY	A	B	C	D
S-ILS 18	853-½ 200 (200-½)			
S-LOC 18	1080-½ 427 (500-½)	1080-¾ 427 (500-¾)	1080-1 427 (500-1)	1080-1 427 (500-1)
CIRCLING	1180-1 525 (600-1)	1440-2¼ 785 (800-2¼)	1780-3 1125 (1200-3)	