

KNOXVILLE, TENNESSEE

AL-218 (FAA)

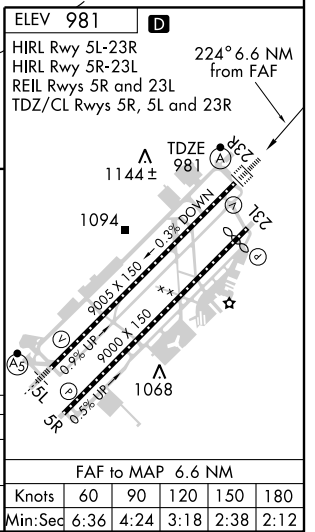
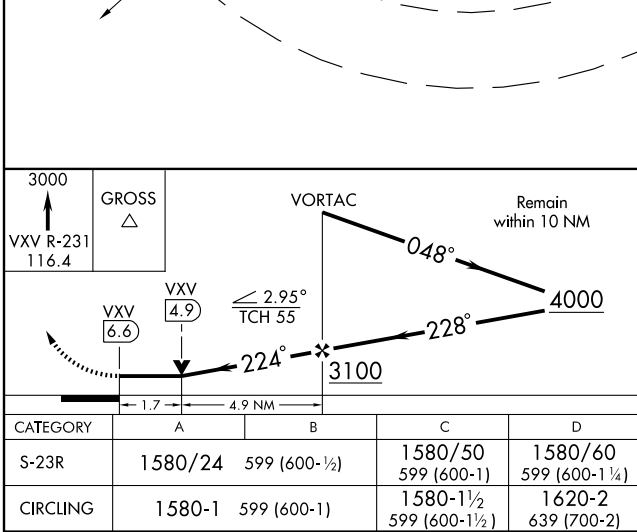
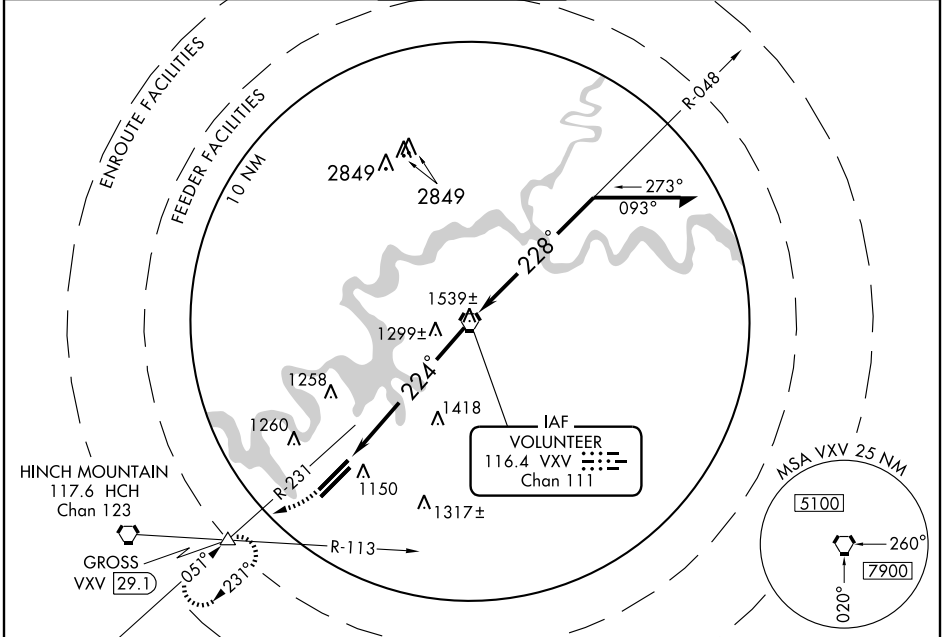
VOR/DME VVX <b>116.4</b> Chan <b>111</b>	APP CRS <b>224°</b>	Rwy Idg <b>9005</b> TDZE <b>981</b> Apt Elev <b>981</b>
--	------------------------	---

# VOR RWY 23R

KNOXVILLE/MCGHEE-TYSON (TYS)

ASR	ALSF-2	MISSED APPROACH: Climb to 3000 via VVX R-231 to GROSS Int/29.1 DME and hold.
-----	--------	--

ATIS <b>128.35</b>	KNOXVILLE APP CON <b>123.9 360.8</b>	KNOXVILLE TOWER <b>121.2 257.8</b>	GND CON <b>121.9 348.6</b>	CLNC DEL <b>121.65</b>
-----------------------	---	---------------------------------------	-------------------------------	---------------------------



KNOXVILLE, TENNESSEE  
Amdt 7 09183

35°49'N - 84°00'W

KNOXVILLE/MCGHEE-TYSON (TYS)  
**VOR RWY 23R**

SE-1, 22 OCT 2009 to 19 NOV 2009

SE-1, 22 OCT 2009 to 19 NOV 2009