

WAAS CH 97410 W05B	APP CRS 048°	Rwy Idg TDZE Apt Elev	8600 959 981
--	------------------------	-----------------------------	---

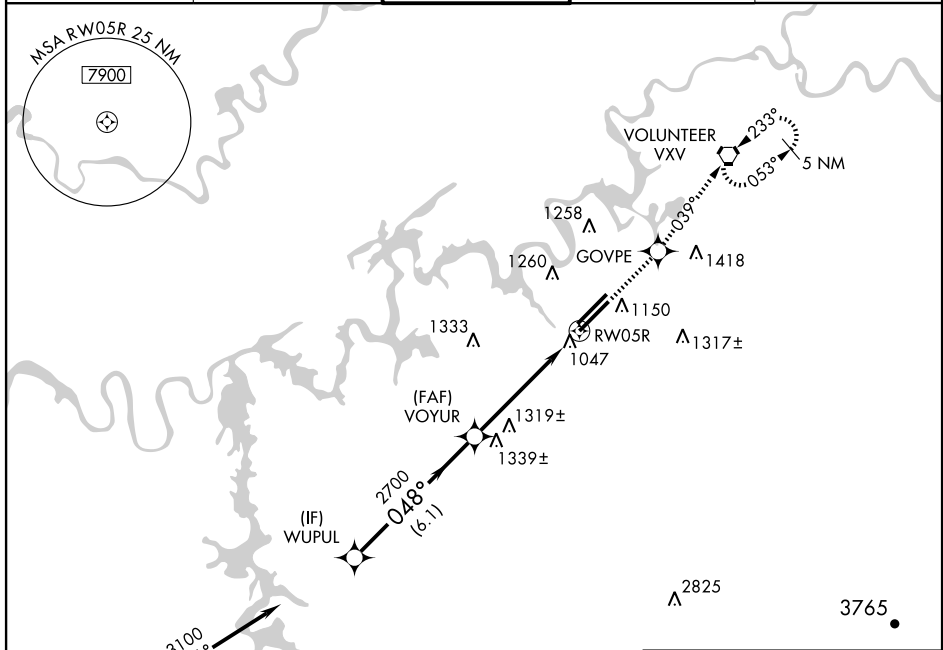
RNAV (GPS) RWY 5R

KNOXVILLE/MCGHEE-TYSON (TYS)

ASR For uncompensated Baro-VNAV systems, LNAV/VNAV NA below -16° C (4° F) or above 47° C (116° F). DME/DME RNP-0.3 NA.

MISSED APPROACH: Climb to 4000 direct GOVPE and via 039° track to VXV VORTAC and hold, continue climb-in-hold to 4000.

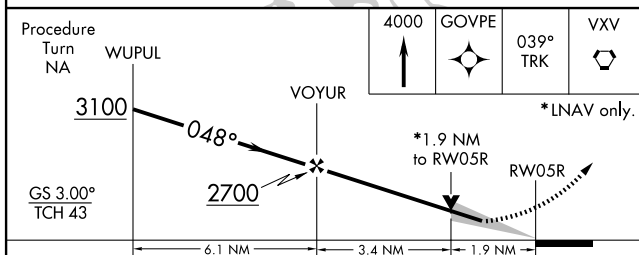
ATIS 128.35	KNOXVILLE APP CON 123.9 360.8	KNOXVILLE TOWER 121.2 257.8	GND CON 121.9 348.6	CLNC DEL 121.65
-----------------------	---	---------------------------------------	-------------------------------	---------------------------



SE-1, 22 OCT 2009 to 19 NOV 2009

SE-1, 22 OCT 2009 to 19 NOV 2009

(IAF) GROSS 3100 061° (9.7) Procedure NA for arrivals at GROSS via V115 Southwest bound.



CATEGORY	A	B	C	D
LPV DA	1276-1¼		317 (300-1¼)	
LNAV/VNAV DA	1471-2		512 (500-2)	
LNAV MDA	1580-1	621 (600-1)	1580-1¾ 621 (600-1¾)	1580-2 621 (600-2)
CIRCLING	1580-1	599 (600-1)	1580-1¾ 599 (600-1¾)	1620-2 639 (700-2)

