


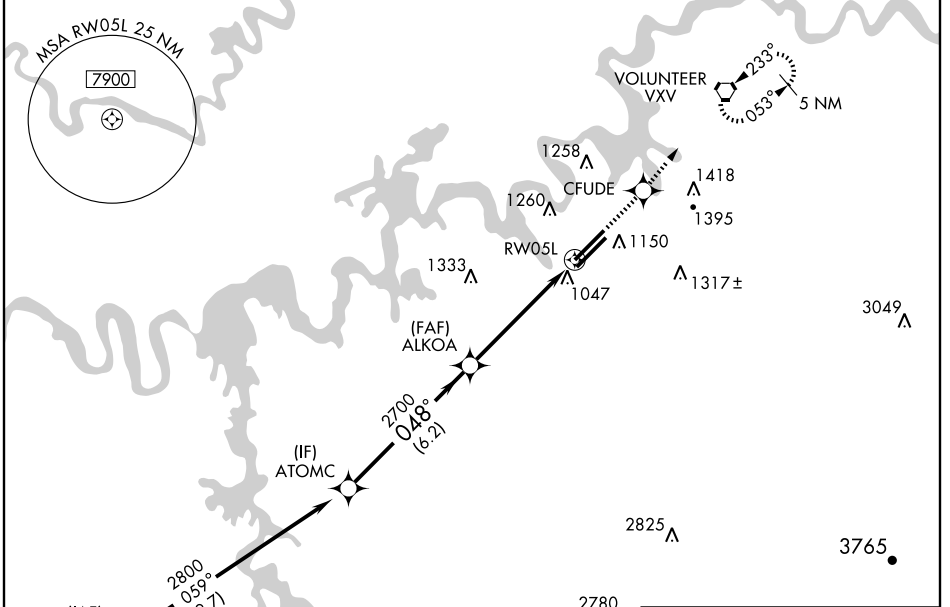
WAAS CH <b>48802</b> <b>W05A</b>	APP CRS <b>048°</b>	Rwy Idg TDZE Apt Elev	<b>9005</b> <b>953</b> <b>981</b>
--	------------------------	-----------------------------	---

# RNAV (GPS) RWY 5L

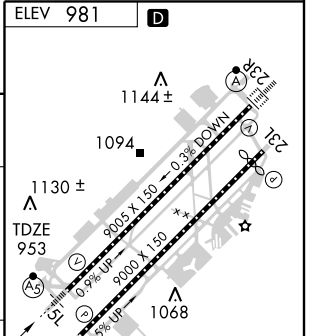
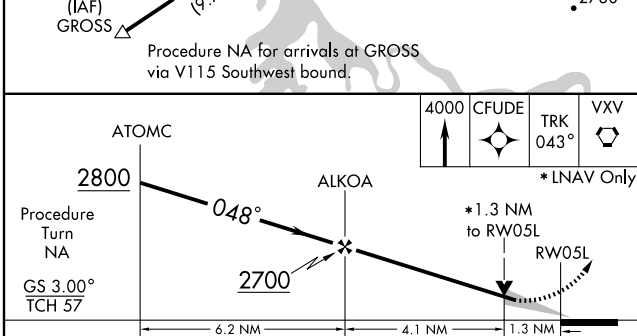
KNOXVILLE/MCGHEE-TYSON (TYS)

<p><b>ASR</b> For inoperative MALSR, increase LPV all Cats visibility to RVR 5000. For uncompensated Baro-VNAV systems, LNAV/VNAV NA below -16°C (4°F) or above 47°C (116°F). DME/DME RNP-0.3 NA.</p>	<p><b>MALSR</b></p>  <p><b>MISSED APPROACH:</b> Climb to 4000 direct CFUDE and via 043° track to VXV VORTAC and hold, continue climb-in-hold to 4000.</p>
---	--

<b>ATIS</b> <b>128.35</b>	<b>KNOXVILLE APP CON</b> <b>123.9 360.8</b>	<b>KNOXVILLE TOWER</b> <b>121.2 257.8</b>	<b>GND CON</b> <b>121.9 348.6</b>	<b>CLNC DEL</b> <b>121.65</b>
------------------------------	--	--	--------------------------------------	----------------------------------



Procedure NA for arrivals at GROSS via V115 Southwest bound.



CATEGORY	A	B	C	D
LPV DA		1203/24	250 (300-½)	
LNAV/VNAV DA		1326/50	373 (400-1)	
LNAV MDA	1380/24	427 (400-½)	1380/40 427 (400-¾)	1380/50 427 (400-1)
CIRCLING	1460-1½ 479 (500-1½)	1520-1½ 539 (600-1½)	1540-1½ 559 (600-1½)	1620-2 639 (700-2)

HIRL Rwy 5L-23R  
HIRL Rwy 5R-23L  
REIL Rwys 5R and 23L  
TDZ/CL Rwys 5R, 5L and 23R

SE-1, 22 OCT 2009 to 19 NOV 2009

SE-1, 22 OCT 2009 to 19 NOV 2009