

KNOXVILLE, TENNESSEE

AL-218 (FAA)

RNAV (GPS) RWY 23R

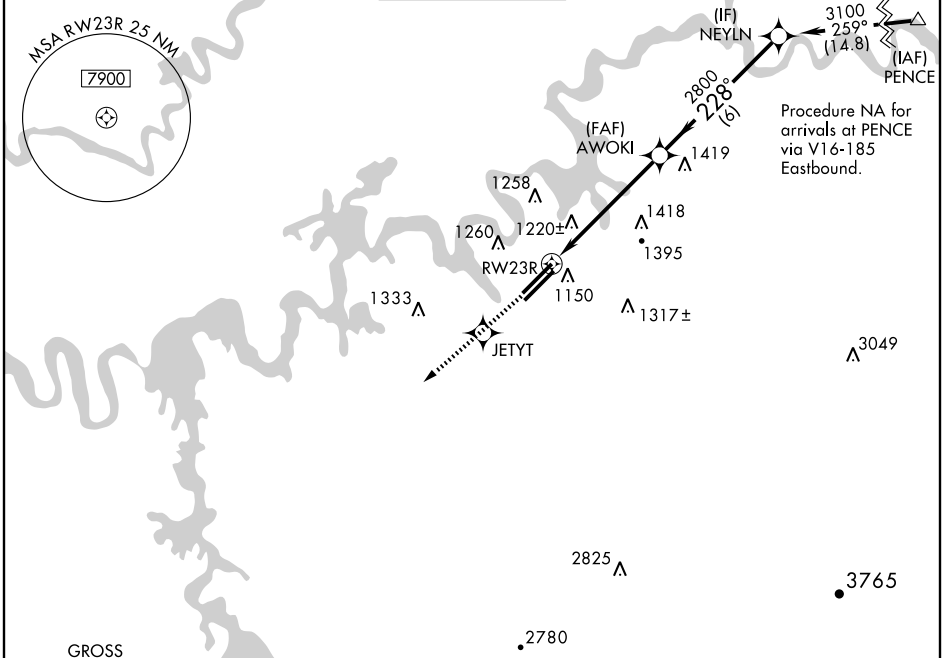
KNOXVILLE/MCGHEE-TYSON (TYS)

WAAS CH 81902 W23A	APP CRS 228°	Rwy Idg TDZE Apt Elev	9005 981 981
--	------------------------	-----------------------------	---

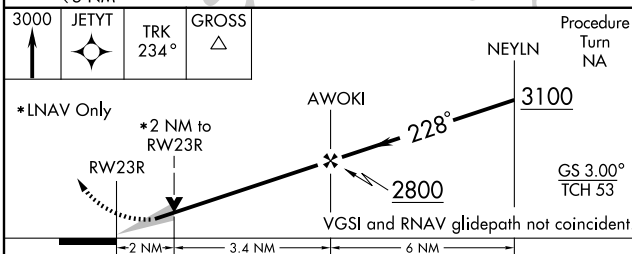
⚠ For inoperative ALSF-2, increase LPV all Cats visibility to RVR 4000.
⚠ For uncompensated Baro-VNAV systems, LNAV/VNAV NA below -16° C (4°F) or above 47° C (116°F). DME/DME RNP-0.3 NA.

Ⓜ ALSF-2 **Ⓜ** MISSED APPROACH: Climb to 3000 direct JETYT and via 234° track to GROSS and hold.

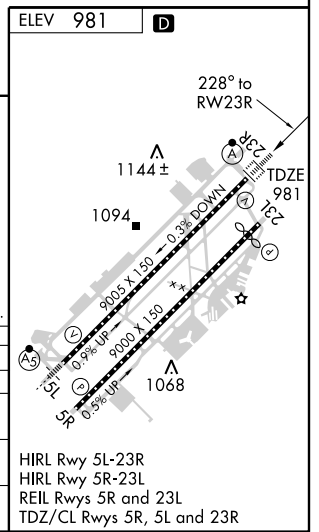
ATIS 128.35	KNOXVILLE APP CON 123.9 360.8	KNOXVILLE TOWER 121.2 257.8	GND CON 121.9 348.6	CLNC DEL 121.65
-----------------------	---	---------------------------------------	-------------------------------	---------------------------



Procedure NA for arrivals at PENCE via V16-185 Eastbound.



CATEGORY	A	B	C	D
LPV DA		1231/24	250 (300-1/2)	
LNAV/VNAV DA		1550-1 1/2	569 (600-1 1/2)	
LNAV MDA	1680/24	699 (700-1/2)	1680-1 1/2 699 (700-1 1/2)	1680-1 3/4 699 (700-1 3/4)
CIRCLING		1680-2	699 (700-2)	1680-2 1/4 699 (700-2 1/4)



HIRL Rwy 5L-23R
 HIRL Rwy 5R-23L
 REIL Rwys 5R and 23L
 TDZ/CL Rws 5R, 5L and 23R

SE-1, 22 OCT 2009 to 19 NOV 2009

SE-1, 22 OCT 2009 to 19 NOV 2009

KNOXVILLE, TENNESSEE
 Amdt 1 09183

35° 49' N - 84° 00' W

KNOXVILLE/MCGHEE-TYSON (TYS) RNAV (GPS) RWY 23R