

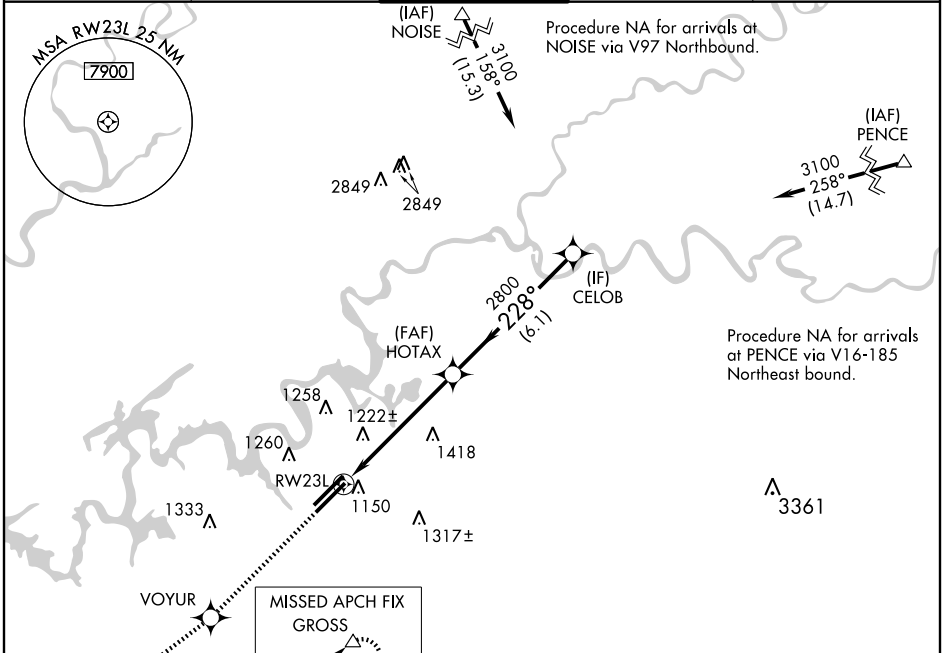
# RNAV (GPS) RWY 23L

KNOXVILLE/MCGHEE-TYSON (TYS)

WAAS CH <b>90210</b> <b>W23B</b>	APP CRS <b>228°</b>	Rwy Idg TDZE Apt Elev	<b>8600</b> <b>965</b> <b>981</b>
--	------------------------	-----------------------------	---

<b>ASR</b>	For uncompensated Baro-VNAV systems, LNAV/VNAV NA below -16° C (4° F) or above 47° C (116° F). Visibility reduction by helicopters NA. DME/DME RNP-0.3 NA.	<b>MISSED APPROACH:</b> Climb to 3000 direct VOYUR and via 236° track to GROSS and hold.
------------	--	--

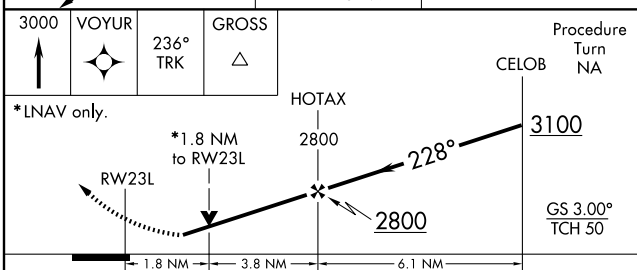
ATIS <b>128.35</b>	KNOXVILLE APP CON <b>123.9 360.8</b>	KNOXVILLE TOWER <b>121.2 257.8</b>	GND CON <b>121.9 348.6</b>	CLNC DEL <b>121.65</b>
-----------------------	---	---------------------------------------	-------------------------------	---------------------------



SE-1, 22 OCT 2009 to 19 NOV 2009

SE-1, 22 OCT 2009 to 19 NOV 2009

3000	VOYUR	236° TRK	GROSS
↑	✧	↔	△



CATEGORY	A	B	C	D
LPV DA	1215/40		250 (300-¾)	
LNAV/VNAV DA	1544-2		579 (600-2)	
LNAV MDA	1580/50	615 (600-1)	1580-¾ 615 (600-¾)	1580-2 615 (600-2)
CIRCLING	1580-1	599 (600-1)	1580-¾ 599 (600-¾)	1620-2 639 (700-2)

