

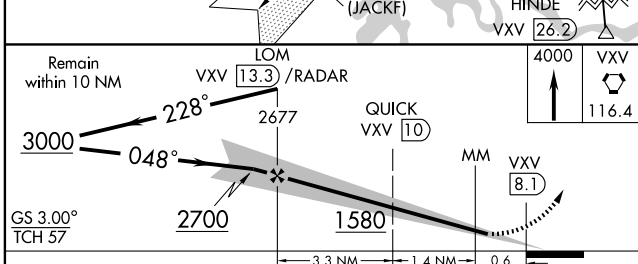
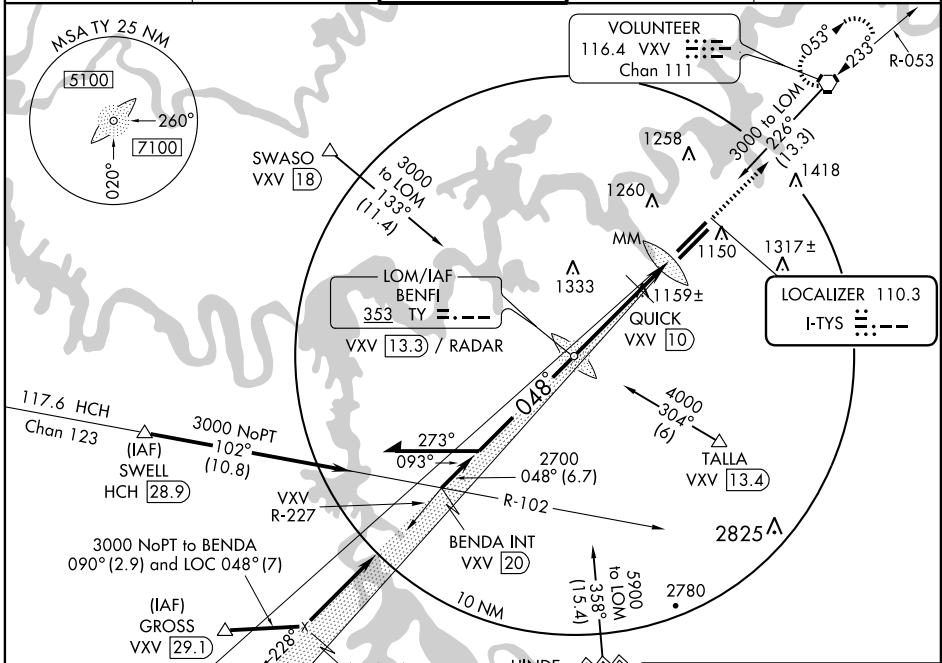
LOC I-TYS <b>110.3</b>	APP CRS <b>048°</b>	Rwy Idg TDZE Apt Elev	<b>9005</b> <b>953</b> <b>981</b>
---------------------------	------------------------	-----------------------------	---

# ILS or LOC RWY 5L

KNOXVILLE/MCGHEE-TYSON (TYS)

<b>ASR</b>	<b>MALSR</b>	<b>MISSED APPROACH:</b> Climb to 4000 direct VXV VORTAC and hold.		
------------	--------------	---	--	--

<b>ATIS</b> 128.35	<b>KNOXVILLE APP CON</b> 123.9 360.8	<b>KNOXVILLE TOWER</b> 121.2 257.8	<b>GND CON</b> 121.9 348.6	<b>CLNC DEL</b> 121.65
-----------------------	---	---------------------------------------	-------------------------------	---------------------------



<b>ELEV 981</b>	<b>D</b>												
HIRL Rwy 5L-23R													
HIRL Rwy 5R-23L													
REIL Rwys 5R and 23L													
TDZ/CL Rwys 5R, 5L and 23R													
<table border="1"> <tr> <td>Knots</td> <td>60</td> <td>90</td> <td>120</td> <td>150</td> <td>180</td> </tr> <tr> <td>Min:Seq</td> <td>5:18</td> <td>3:32</td> <td>2:39</td> <td>2:07</td> <td>1:46</td> </tr> </table>		Knots	60	90	120	150	180	Min:Seq	5:18	3:32	2:39	2:07	1:46
Knots	60	90	120	150	180								
Min:Seq	5:18	3:32	2:39	2:07	1:46								

CATEGORY	A	B	C	D
S-ILS 5L		1153/18	200 (200-½)	
S-LOC 5L	1580/24	627 (600-½)	1580/60 627 (600-¼)	1580-1½ 627 (600-½)
CIRCLING	1580-1	599 (600-1)	1580-¾ 599 (600-¼)	1620-2 639 (700-2)
<b>QUICK FIX MINIMUMS</b>				
S-LOC 5L	1420/24	467 (500-½)	1420/40 467 (500-¾)	1420/50 467 (500-1)
CIRCLING	1460-1 479 (500-1)	1520-1 539 (600-1)	1540-1½ 559 (600-½)	1620-2 639 (700-2)

SE-1, 22 OCT 2009 to 19 NOV 2009

SE-1, 22 OCT 2009 to 19 NOV 2009