

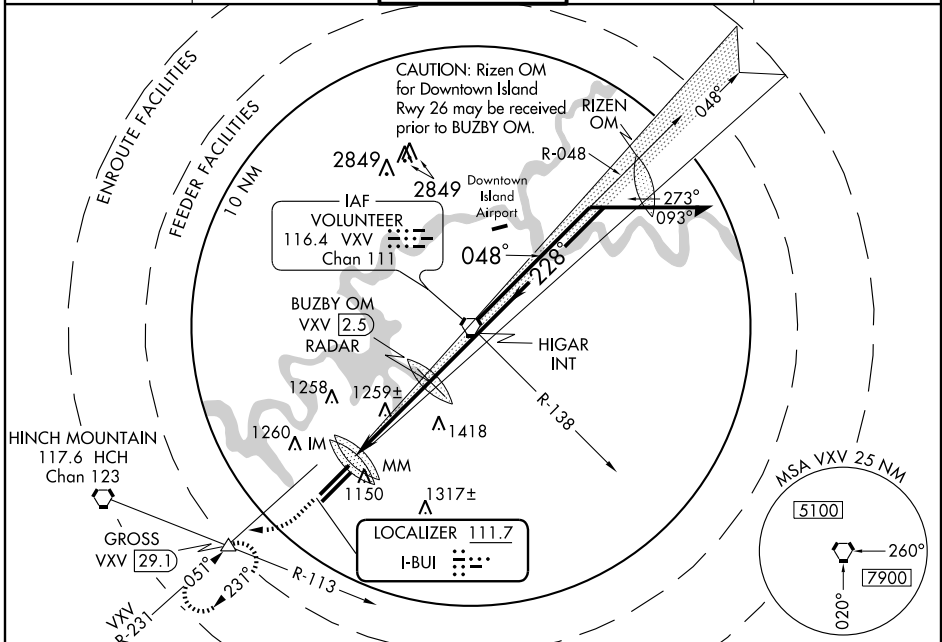
ILS or LOC RWY 23R

KNOXVILLE/MCGHEE-TYSON (TYS)

LOC I-BUI 111.7	APP CRS 228°	Rwy ldg 9005
		TDZE 981
		Apt Elev 981

 ASR	 ALSF-2	MISSED APPROACH: Climb to 2000 then climbing right turn to 3000 via 240° heading and VXV VORTAC R-231 to GROSS Int/29.1 DME and hold.	

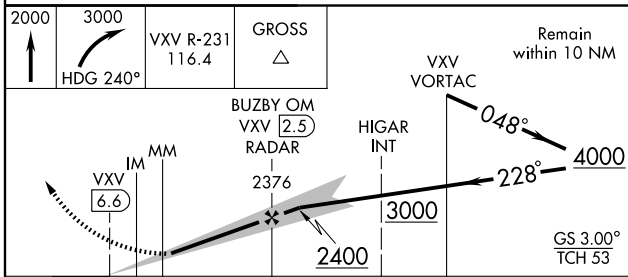
ATIS 128.35	KNOXVILLE APP CON 123.9 360.8	KNOXVILLE TOWER 121.2 257.8	GND CON 121.9 348.6	CLNC DEL 121.65
-----------------------	---	---------------------------------------	-------------------------------	---------------------------



SE-1, 22 OCT 2009 to 19 NOV 2009

SE-1, 22 OCT 2009 to 19 NOV 2009

2000	3000	VXV R-231 116.4	GROSS	Remain within 10 NM
		HDG 240°		



ELEV 981

HIRL Rwy 5L-23R 228° 4.2 NM from FAF

HIRL Rwy 5R-23L

REIL Rwys 5R and 23L

TDZ/CL Rws 5R, 5L and 23R

1144 ±

1094

1068

0.3% UP

0.3% DOWN

9005 X 1.50

9000 X 1.50

51

52

53

TDZE 981

231

23R

23L

FAF to MAP 4.2 NM

Knots	60	90	120	150	180
Min:Seq	4:12	2:48	2:06	1:41	1:24

CATEGORY	A	B	C	D
S-ILS 23R	1181/18		200 (200-½)	
S-LOC 23R	1520/24	539 (600-½)	1520/50 539 (600-1)	1520/60 539 (600-1¼)
CIRCLING	1520-1	539 (600-1)	1540-1½ 559 (600-1½)	1620-2 639 (700-2)