

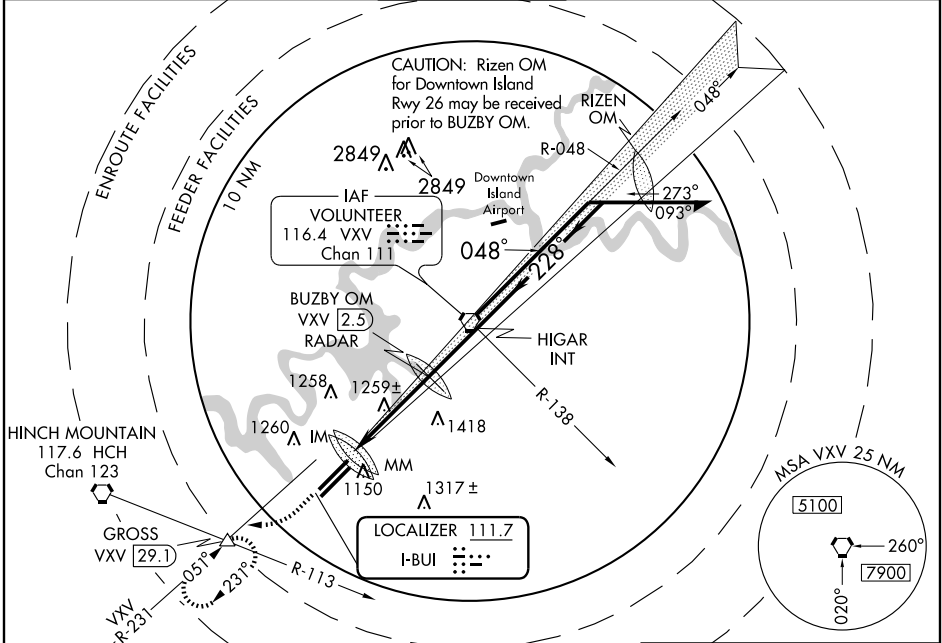
# ILS RWY 23R (CAT II)

KNOXVILLE/MCGHEE-TYSON (TYS)

LOC I-BUI <b>111.7</b>	APP CRS <b>228°</b>	Rwy ldg <b>9005</b>
		TDZE <b>981</b>
		Apt Elev <b>981</b>

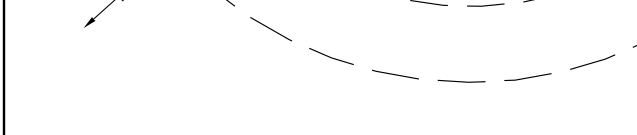
 ASR	ALSIF-2	MISSED APPROACH: Climb to 2000 then climbing right turn to 3000 via 240° heading and VXV VORTAC R-231 to GROSS Int/29.1 DME and hold.

ATIS <b>128.35</b>	KNOXVILLE APP CON <b>123.9 360.8</b>	KNOXVILLE TOWER <b>121.2 257.8</b>	GND CON <b>121.9 348.6</b>	CLNC DEL <b>121.65</b>
-----------------------	---	---------------------------------------	-------------------------------	---------------------------



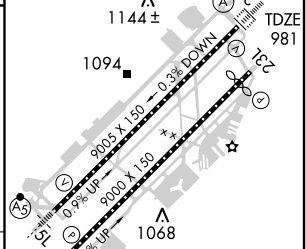
SE-1, 22 OCT 2009 to 19 NOV 2009

SE-1, 22 OCT 2009 to 19 NOV 2009



ELEV 981	D
----------	---

CATEGORY	A	B	C	D
S-ILS 23R	1081/12		100 RA 106	



**CATEGORY II ILS - SPECIAL AIRCREW & AIRCRAFT CERTIFICATION REQUIRED**

HIRL Rwy 5L-23R  
HIRL Rwy 5R-23L  
REIL Rwy 5R and 23L  
TDZ/CL Rwy 5R, 5L and 23R