

VORTAC VXV 116.4 Chan 111	APCH CRS 045°	Rwy Idg TDZE Arpt Elev 9008 953 981
---	-------------------------	---

JAL-218 [USAF]

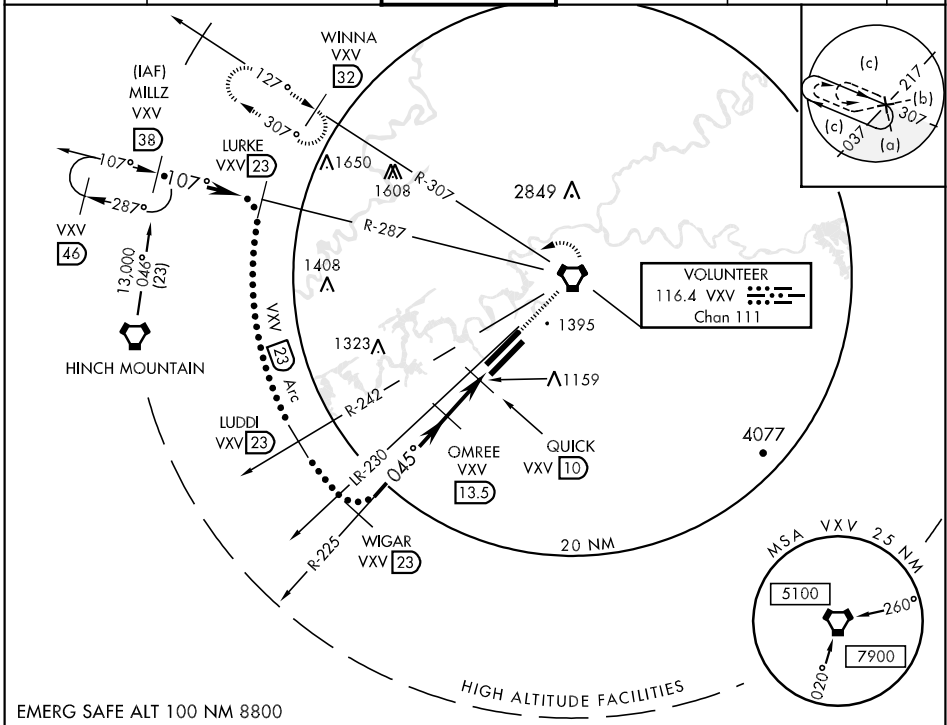
KNOXVILLE/ McGHEE TYSON (KTYS)

▼ * When ALS inop, increase CAT C vis to 1¼ mile, CAT D vis to 1½ miles, CAT E vis to 1¾ miles.
** When ALS inop, increase vis CAT E ½ mile.



MISSED APPROACH: Climb to 6000 direct to VXV VORTAC. At VXV VORTAC, turn left via VXV R-307 to WINNA INT (VXV R-307/32 DME) and hold.

ATIS ★ 128.35	KNOXVILLE APP CON 118.0 360.8	KNOXVILLE TOWER 121.2 257.8	GND CON 121.9 348.6	CLNC DEL 121.65	ASR
-------------------------	---	---------------------------------------	-------------------------------	---------------------------	-----



SE-1, 22 OCT 2009 to 19 NOV 2009

SE-1, 22 OCT 2009 to 19 NOV 2009

EMERG SAFE ALT 100 NM 8800

				6000	VXV	ELEV 981
						TDZL Rwy 23R REIL Rwy 5R and 23L HIRL Rwy 5R-23L, 5L-23R
						1014 A 23R 1139 A 1094 ■ 1025 ★ 1057 A 1068 A
						5.0 NM 4 5.0 NM 0.84 NM 9008 x 150 9000 045° 5.4 NM from FAF
CATEGORY	C	D	E			
S-5L*	1420/40 467 (500-¾)	1420/50 467 (500-1)	1420/60 467 (500-1¼)			
CIRCLING	1540-1½ 559 (600-1½)	1620-2 639 (700-2)	1900-3 919 (1000-3)			
S-ASR 5L**	1420/40 467 (500-¾)	1420/50 467 (500-1)	1420/60 467 (500-1¼)			