

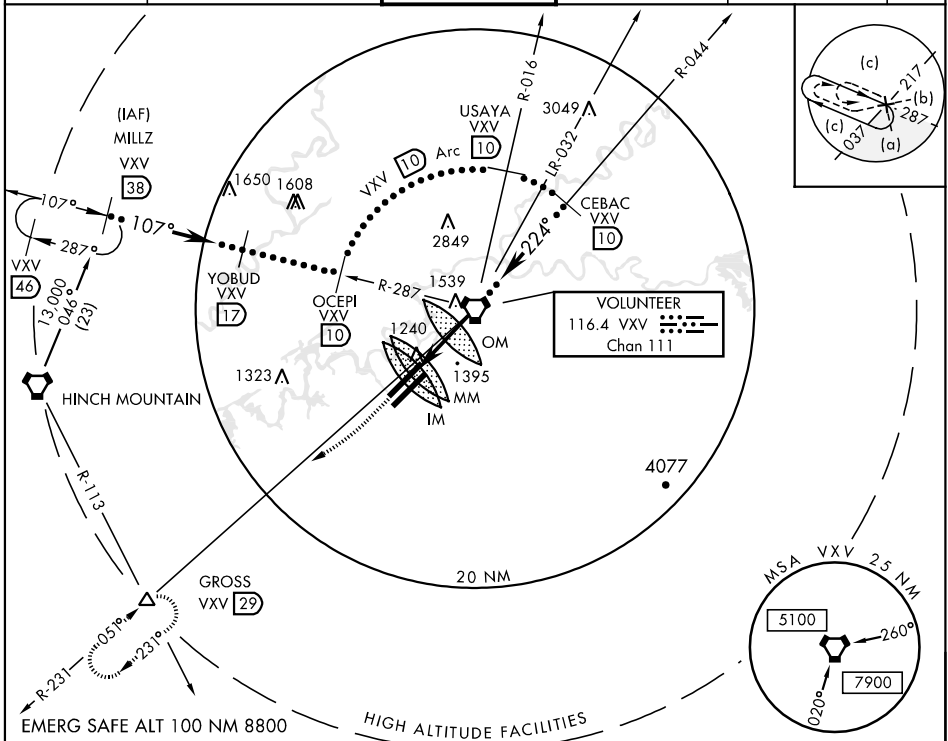
KNOXVILLE, TENNESSEE

HI-VOR/DME or TACAN RWY 23R

VORTAC VXV 116.4 Chan 111	APCH CRS 224°	Rwy Idg TDZE Arprt Elev 9008 981 981	JAL-218 [USAF]	KNOXVILLE/ McGHEE TYSON (KTYS)
---	-------------------------	--	----------------	--------------------------------

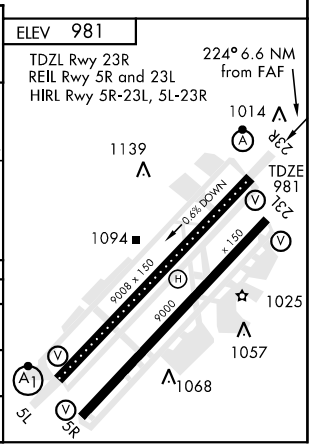
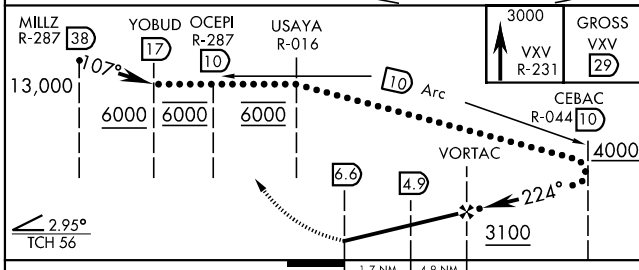
<p>▲ *When ALS inop, increase CAT C vis to 1½ miles, CAT D vis to 1¾ miles, CAT E vis to 2 miles.</p>	<p>ALSF-2 A</p>	<p>MISSED APPROACH: Climb to 3000 on VXV VORTAC R-231 to GROSS Int/29 DME and hold.</p>
---	---------------------	---

<p>ATIS ★ 128.35</p>	<p>KNOXVILLE APP CON 118.0 360.8</p>	<p>KNOXVILLE TOWER 121.2 257.8</p>	<p>GND CON 121.9 348.6</p>	<p>CLNC DEL 121.65</p>	<p>ASR</p>
---------------------------------	---	---	---------------------------------------	-----------------------------------	------------



SE-1, 22 OCT 2009 to 19 NOV 2009

SE-1, 22 OCT 2009 to 19 NOV 2009



CATEGORY	C	D	E
S-23R*	1580/50 599 (600-1)	1580/60 599 (600-1¼)	1580-1½ 599 (600-1½)
CIRCLING	1580-1½ 599 (600-1½)	1620-2 639 (700-2)	1900-3 919 (1000-3)
S-ASR 23R	1520/50 539 (600-1)	1520/60 539 (600-1¼)	1520-1½ 539 (600-1½)

KNOXVILLE, TENNESSEE 35°49'N-84°00'W KNOXVILLE/ McGHEE TYSON (KTYS)

Amtd 3 05188

HI-VOR/DME or TACAN RWY 23R