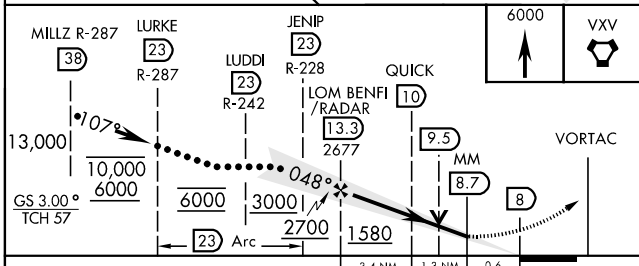
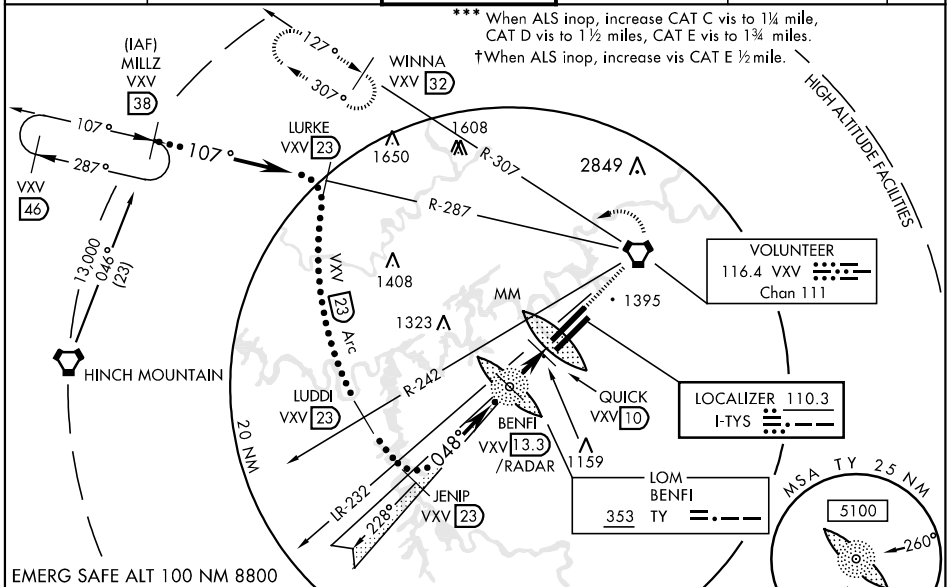


LOC I-TYS 110.3	APCH CRS 048°	Rwy Idg TDZE Arprt Elev 9008 953 981	JAL-218 [USAF]	KNOXVILLE/ McGHEE TYSON (KTYS)	
* When ALS inop, increase CAT CDE vis to ¾ mile. ** When ALS inop, increase CAT C vis to 1¾ mile, CAT D vis to 2 miles, CAT E vis to 2 ½ miles.		ALSF-1 	MISSED APPROACH: Climb to 6000 direct to VXV VORTAC. At VXV VORTAC, turn left to via VXV R-307 to WINNA INT (VXV R-307/32 DME) and hold.		
ATIS * 128.35	KNOXVILLE APP CON 118.0 360.8	KNOXVILLE TOWER 121.2 257.8	GND CON 121.9 348.6	CLNC DEL 121.65	ASR



ELEV 981	TDZL Rwy 23R REIL Rwy 5R and 23L HIRL Rwy 5R-23L, 5L-23R
	1014 A 1139 A 1094 ■ 1025 ☆ 1057 A 1068 A
0.83 UP 5008 x 150 8000	0.48° 5.3 NM from FAF FAF to MAP 5.3 NM
Knots: 120, 140, 160, 180, 200 Min:Sec: 2:39, 2:16, 1:59, 1:46, 1:35	

CATEGORY	C	D	E
S-ILS 5L *	1153/18 200	(200-½)	1153/24 200 (200-½)
S-LOC 5L **	1580/60 627 (700-1¼)	1580-1 ½ 627 (700-1½)	1580-1¾ 627 (700-1¾)
CIRCLING	1580-1¾ 599 (600-1¾)	1620-2 639 (700-2)	1900-3 919 (1000-3)
S-ASR 5L †	1420/40 467 (500-¾)	1420/50 467 (500-1)	1420/60 467 (500-1¼)
QUICK FIX MINIMUMS			
S-LOC 5L ***	1420/40 467 (500-¾)	1420/50 467 (500-1)	1420/60 467 (500-1¼)
CIRCLING	1540-1 ½ 559 (600-1½)	1620-2 639 (700-2)	1900-3 919 (1000-3)

SE-1, 22 OCT 2009 to 19 NOV 2009

SE-1, 22 OCT 2009 to 19 NOV 2009