

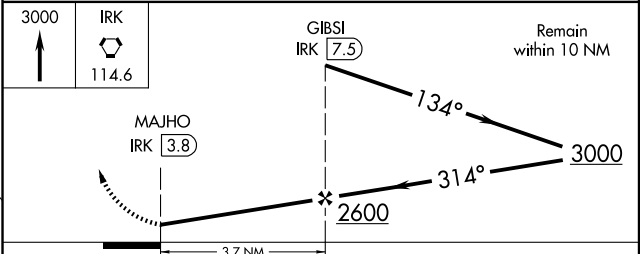
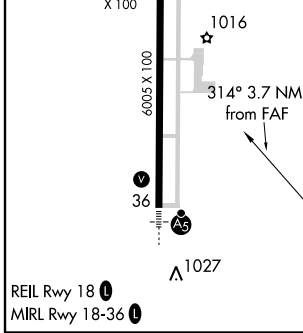
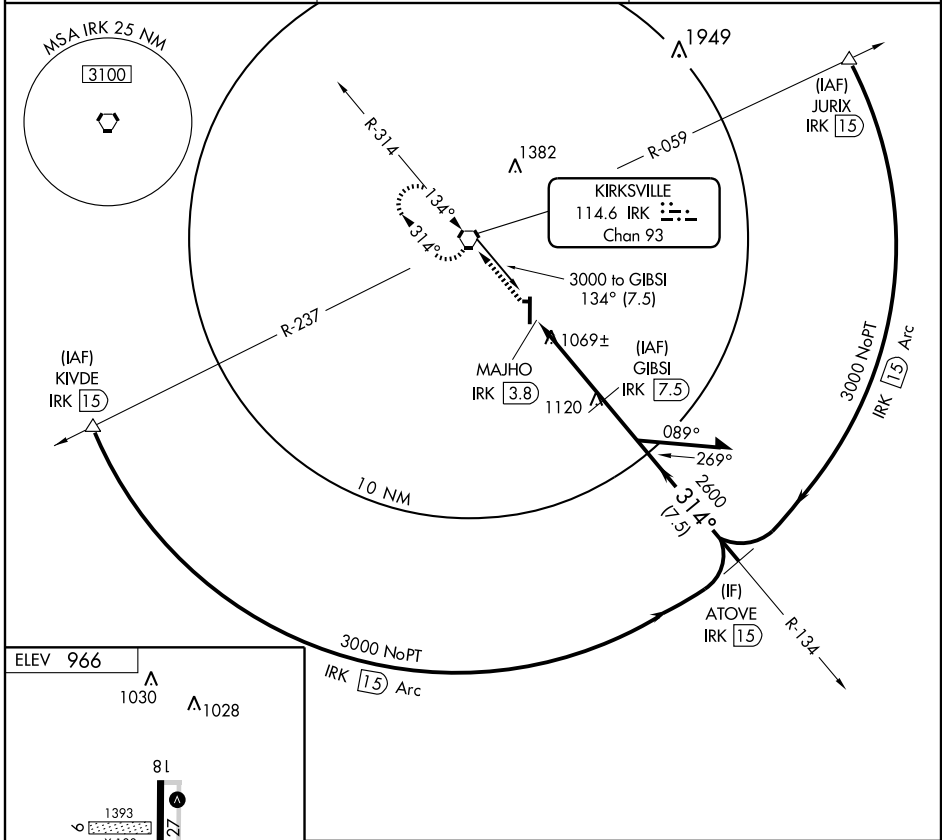
VORTAC IRK <b>114.6</b> Chan <b>93</b>	APP CRS <b>314°</b>	Rwy Idg TDZE Apt Elev	<b>N/A</b> <b>N/A</b> <b>966</b>
--	------------------------	-----------------------------	--

**VOR/DME-B**  
KIRKSVILLE RGNL (IRK)

**▼** When local altimeter setting not received, use Oltumwa Industrial altimeter setting and increase all MDA 160 feet, and increase Cats C and D visibility 1/4 mile.

**▲** MISSED APPROACH: Climb to 3000 direct IRK VORTAC and hold, continue climb-in-hold to 3000.

ASOS <b>121.125</b>	KANSAS CITY CENTER <b>132.6 370.9</b>	UNICOM <b>122.8 (CTAF)</b>
------------------------	--	-------------------------------



CATEGORY	A	B	C	D
CIRCLING	1400-1 434 (500-1)	1420-1 454 (500-1)	1420-1½ 454 (500-1½)	1520-2 554 (600-2)

NC-3, 22 OCT 2009 to 19 NOV 2009

NC-3, 22 OCT 2009 to 19 NOV 2009