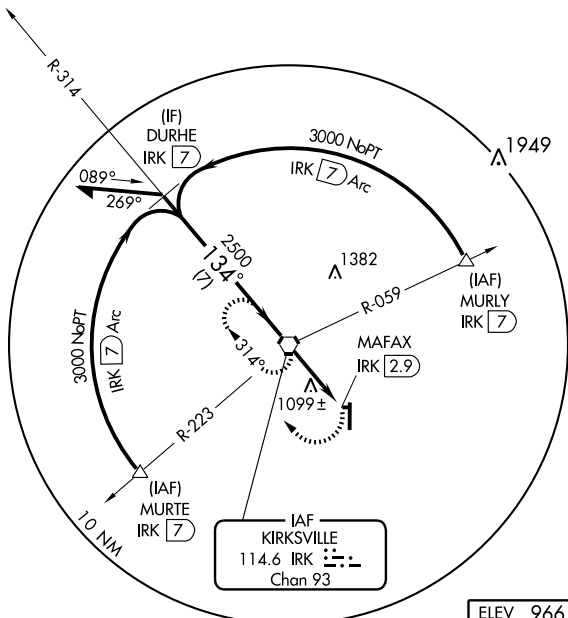


VORTAC IRK 114.6 Chan 93	APP CRS 134°	Rwy Idg TDZE Apt Elev N/A N/A 966
--	------------------------	---

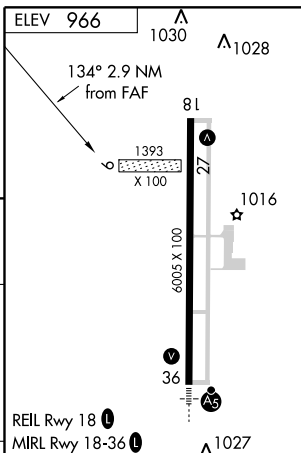
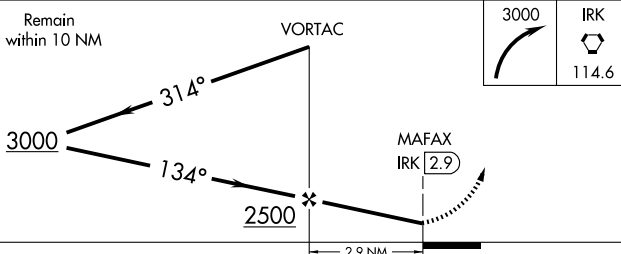
▽ When local altimeter setting not received, use Ottumwa
▲ Industrial altimeter setting and increase all MDA 160 feet,
 increase Cats C and D visibility ¼ mile.

MISSED APPROACH: Climbing right turn to 3000 direct IRK
 VORTAC and hold, continue climb-in-hold to 3000.

ASOS 121.125	KANSAS CITY CENTER 132.6 370.9	UNICOM 122.8 (CTAF) 0
------------------------	--	--



NoPT for arrivals at IRK VORTAC
 on airway radials 259 CW 007.



CATEGORY	A	B	C	D	FAF to MAP 2.9 NM					
CIRCLING	1400-1 434 (500-1)	1420-1 454 (500-1)	1420-1½ 454 (500-1½)	1520-2 554 (600-2)	Knots	60	90	120	150	180
					Min:Sec	2:54	1:56	1:27	1:10	0:58

NC-3, 22 OCT 2009 to 19 NOV 2009

NC-3, 22 OCT 2009 to 19 NOV 2009