

# RNAV (GPS) RWY 36

KIRKSVILLE RGNL (IRK)

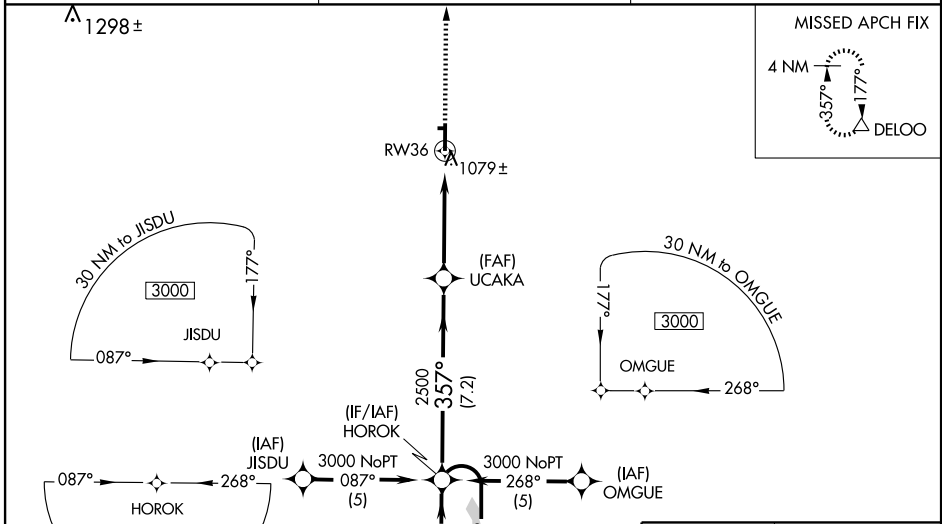
WAAS CH <b>70513</b> <b>W36A</b>	APP CRS <b>357°</b>	Rwy Idg <b>6005</b> TDZE <b>965</b> Apt Elev <b>966</b>
--	------------------------	---

**⚠** Baro-VNAV NA when using Ottumwa Industrial altimeter setting.  
 For uncompensated Baro-VNAV systems, LNAV/VNAV NA below -16°C (4°F) or above 46°C (114°F). DME/DME RNP-0.3 NA.  
 When local altimeter setting not received, use Ottumwa Industrial altimeter setting and increase all DA 158 feet, and all MDA 160 feet; increase LPV all Cats; LNAV Cat D, and Circling Cat C and D visibility ¼ mile, LNAV/VNAV all Cats visibility ¾ mile, LNAV Cat C visibility ½ mile.  
 VDP NA when using Ottumwa Industrial altimeter setting.  
 For inoperative MALS, when using Ottumwa Industrial altimeter setting increase LPV all Cats visibility to 1¼, and LNAV Cat D visibility to 1¼.



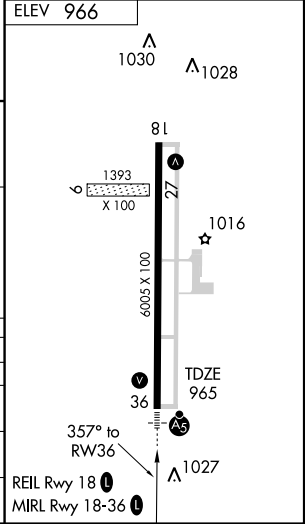
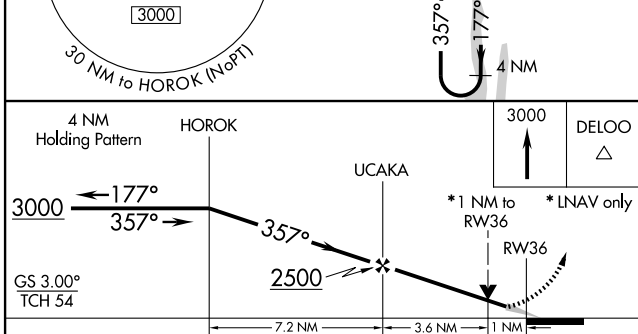
MISSED APPROACH: Climb to 3000 direct DELOO and hold.

ASOS <b>121.125</b>	KANSAS CITY CENTER <b>132.6 370.9</b>	UNICOM <b>122.8 (CTAF)</b>
------------------------	--	-------------------------------



NC-3, 22 OCT 2009 to 19 NOV 2009

NC-3, 22 OCT 2009 to 19 NOV 2009



CATEGORY	A	B	C	D
LPV DA		1165-½	200 (200-½)	
LNAV/VNAV DA		1349-¾	384 (400-¾)	
LNAV MDA	1340-½	375 (400-½)		1340-1 375 (400-1)
CIRCLING	1400-1 434 (500-1)	1420-1 454 (500-1)	1420-1½ 454 (500-1½)	1520-2 554 (600-2)