

KIRKSVILLE, MISSOURI

AL-217 (FAA)

# RNAV (GPS) RWY 18

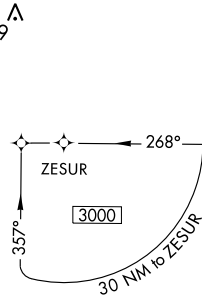
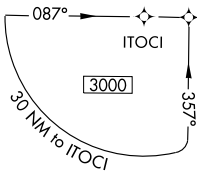
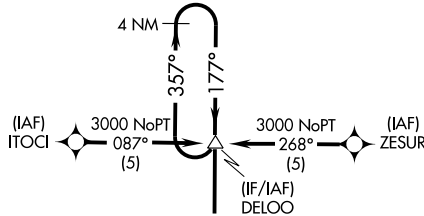
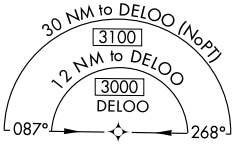
KIRKSVILLE RGNL (IRK)

|             |          |             |
|-------------|----------|-------------|
| APP CRS     | Rwy Idg  | <b>6005</b> |
| <b>177°</b> | TDZE     | <b>966</b>  |
|             | Apt Elev | <b>966</b>  |

- ⚠ DME/DME RNP-0.3 NA. Visibility reduction by helicopters NA.
- ⚠ VDP NA when using Ottumwa Industrial altimeter setting.
- ⚠ When local altimeter setting not received, use Ottumwa Industrial altimeter setting and increase all MDA 160 feet; increase LNAV Cats C and D visibility ½ mile, and Circling Cats C and D visibility ¼ mile.

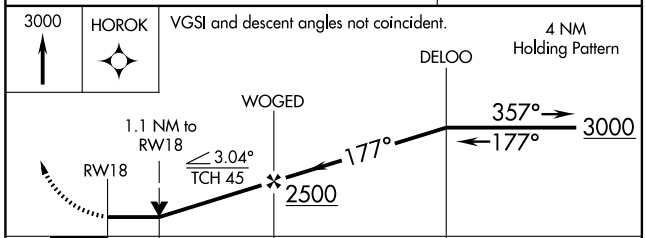
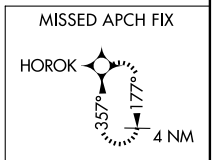
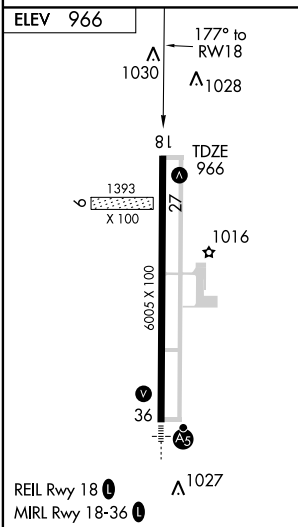
MISSED APPROACH: Climb to 3000 direct HOROK and hold.

|                        |                                          |                                 |
|------------------------|------------------------------------------|---------------------------------|
| ASOS<br><b>121.125</b> | KANSAS CITY CENTER<br><b>132.6 370.9</b> | UNICOM<br><b>122.8 (CTAF) 0</b> |
|------------------------|------------------------------------------|---------------------------------|



NC-3, 22 OCT 2009 to 19 NOV 2009

NC-3, 22 OCT 2009 to 19 NOV 2009



|          |                       |                       |                         |                         |
|----------|-----------------------|-----------------------|-------------------------|-------------------------|
| CATEGORY | A                     | B                     | C                       | D                       |
| LNAV MDA | 1340-1 374 (400-1)    |                       |                         | 1340-1¼<br>374 (400-1¼) |
| CIRCLING | 1400-1<br>434 (500-1) | 1420-1<br>454 (500-1) | 1420-1½<br>454 (500-1½) | 1520-2<br>554 (600-2)   |

KIRKSVILLE, MISSOURI  
Amdt 2 09183

40°06'N-92°33'W

# RNAV (GPS) RWY 18