

RNAV (GPS) RWY 3

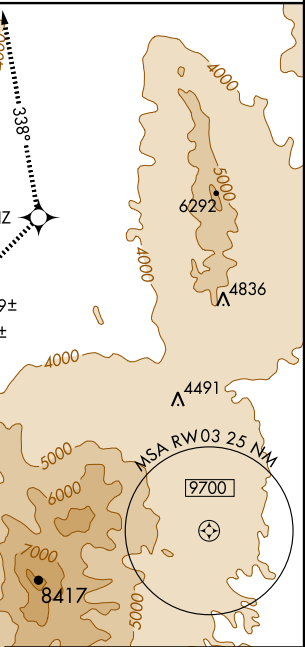
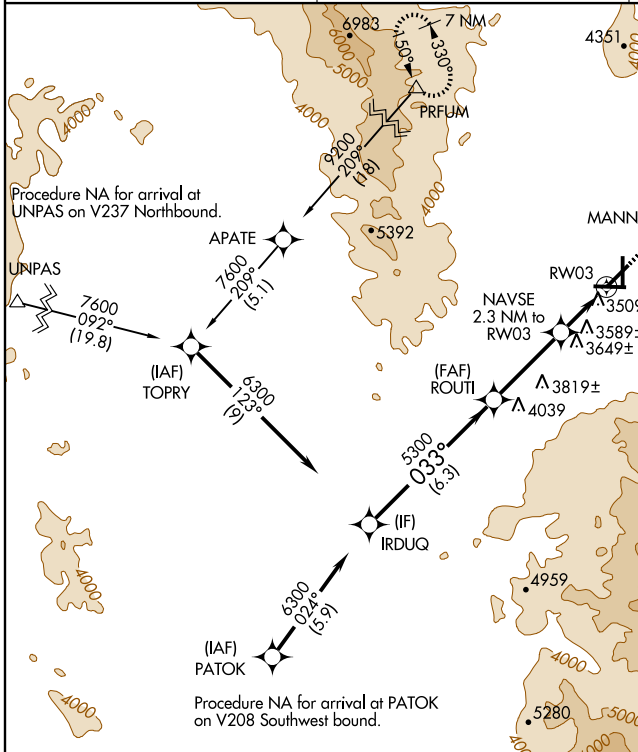
KINGMAN (IGM)

WAAS CH 86312 W03A	APP CRS 033°	Rwy Idg TDZE Apt Elev	6827 3412 3449
---------------------------------	------------------------	-----------------------------	---

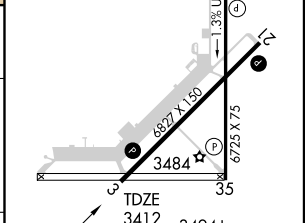
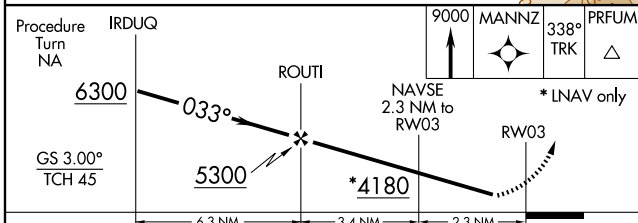
▼ For uncompensated Baro-VNAV systems, LNAV/VNAV NA below -21°C (-5°F) or above 42°C (107°F). DME/DME RNP-0.3 NA.
▲ Visibility reduction by helicopters NA.

MISSED APPROACH: Climb to 9000 direct MANNZ and via track 338° to PRFUM and hold, continue climb-in-hold to 9000.

ASOS 119.275	PRESCOTT RADIO 122.1R	UNICOM 122.8 (CTAF)
------------------------	---------------------------------	-------------------------------



ELEV 3449



CATEGORY	A	B	C	D
LPV DA		3713-1	301 (400-1)	
LNAV/VNAV DA		3952-2	540 (600-2)	
LNAV MDA	3840-1	428 (500-1)	3840-1½ 428 (500-1½)	3840-1½ 428 (500-1½)
CIRCLING	3980-1 531 (600-1)	4020-1 571 (600-1)	4020-1½ 571 (600-1½)	4140-2¼ 691 (700-2¼)

033° to RW03

REIL Rwy 3 and 21

MIRL Rwy 3-21 and 17-35

SW-4, 22 OCT 2009 to 19 NOV 2009

SW-4, 22 OCT 2009 to 19 NOV 2009